

2025-05088

RECORDED: 04/17/2025 01:32:52 PM

RECORDING FEE: \$7.00

REVENUE TAX: \$

COMBINED FEE: \$7.00

SANDIE L. SMITH, RECORDER  
BLACK HAWK COUNTY, IOWA

\* PREPARED BY / RETURN TO JEFFREY R HUTTON, PLS \* 407 SYCAMORE ST LA PORTE CITY, IOWA 50651 \* (319)342-4774

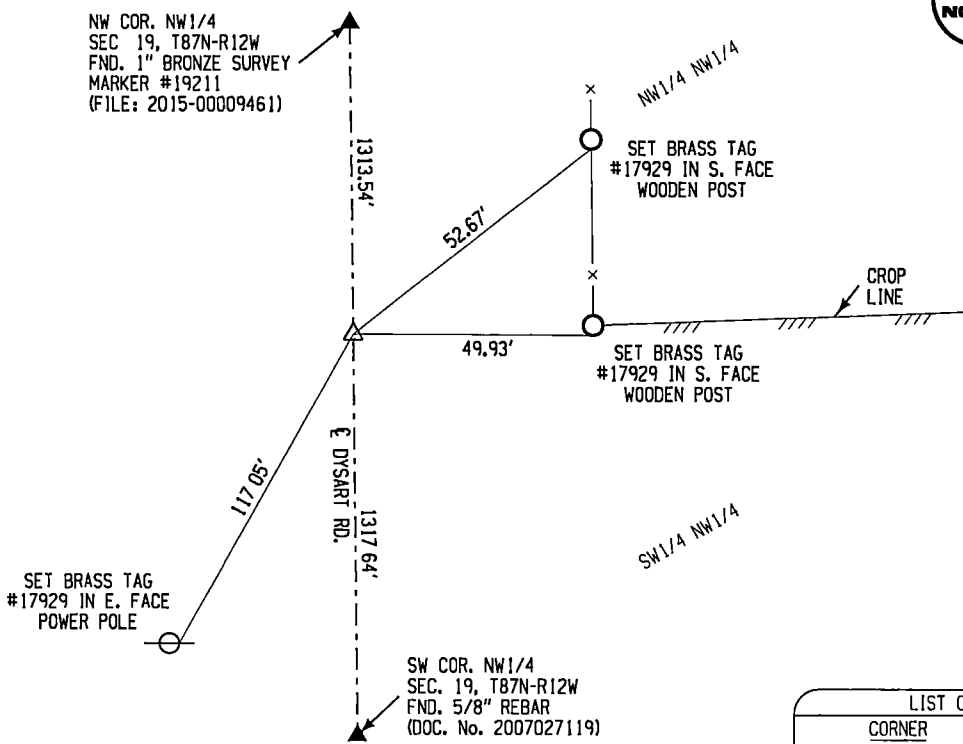
### UNITED STATES PUBLIC LAND SURVEY CORNER CERTIFICATE OF

Land Survey Monuments situated in Section 19, Township 87N, Range 12W of the Fifth Principal Meridian, BLACK HAWK County, Iowa, previously recorded in N/A  
in County Recorder's Office (Book, Page, Document Number, etc)

Monument Description and Remarks:

NW COR SW1/4 NW1/4 FOUND NO EVIDENCE OF MONUMENTATION IN THE OFFICE OF THE BLACK HAWK COUNTY RECORDER SEARCHED MIDWAY BETWEEN MONUMENTS FOUND AT THE NW COR NW1/4 AND SW COR NW1/4 FOUND NO MONUMENT BEST FOUND EVIDENCE OF THE LOCATION OF THE SECTION LINE IS A WOODEN POST AT THE E'LY RIGHT-OF-WAY LINE OF DYSART RD ALONG A CROP LINE TO THE EAST TO A WOODEN CORNER POST FOUND AT THE NE COR SE1/4 NW1/4 SET MAG NAIL AT THE INTERSECTION OF THAT LINE AND A LINE BETWEEN SAID NW COR AND W1/4 CORS ACCEPTED AS CORNER. SET TIES AND TIED OUT.

NW COR. SW1/4 NW1/4  
SEC. 19, T87N-R12W



LIST CORNERS TO BE INDEXED			
CORNER	SECTION	TOWNSHIP	RANGE
NW COR. SW1/4 NW1/4	19	87N	12W




I hereby certify that this land surveying document was prepared and the related survey work was performed by me or under my direct personal supervision and that I am a duly licensed Land Surveyor under the laws of the State of Iowa

*Jeffrey R Hutton* 17 Apr 25  
JEFFREY R HUTTON LICENSE NO 17929 DATE

My license is subject to renewal on December 31, 2025  
This certification applies only to the page upon which it appears

REASON FOR PREPARING CERTIFICATE

- A) THERE IS NO CERTIFICATE FOR THE CORNER ON FILE WITH THE RECORDER OF THE COUNTY IN WHICH THE CORNER IS LOCATED
- B) CORNER POSITION DIFFERS FROM THAT SHOWN IN THE PUBLIC RECORDS OF THE COUNTY IN WHICH THE CORNER IS LOCATED
- C) THE CORNER MONUMENT HAS BEEN REPLACED OR MODIFIED
- D) THE REFERENCE TIES REFERRED TO IN AN EXISTING PUBLIC RECORD ARE INCORRECT

LEGEND	SHEET NAME <b>U.S. LAND SURVEY CORNER CERT.</b>		 407 SYCAMORE ST LA PORTE CITY, IA 50651 (319)342-4774 Great Plains Survey, Inc		
	PROJECT NAME <b>RETRACEMENT SW1/4 NW1/4 SEC. 19</b>				
DATE 04/11/2025	DRAWN BY MJWH	CHECKED BY JRH	APPROVED BY JRH	SCALE NTS	PROJECT No 251012