

SC  
MISC  
INDEX *11*  
MARGIN  
PROOF *OK*  
COMPARE *del*

BLACK HAWK COUNTY IOWA:SS  
Filed for record JAN 11, 2000 at  
4:00 P. M. and recorded in Book 336  
of MISC Page 875.  
*Catharine S. Less* Recorder  
FEE N/C  
ENGINEER'S OFFICE

014924

RECEIVED  
BLACK HAWK COUNTY  
ASSESSOR

PREPARED BY: BLACK HAWK COUNTY ENGINEERS OFFICE  
316 E. FIFTH STREET, ROOM 211 WATERLOO, IOWA 50703

PH.# (319) 833-3008  
FAX.# (319) 833-3139  
SLSI 9-94  
CERT 12-96

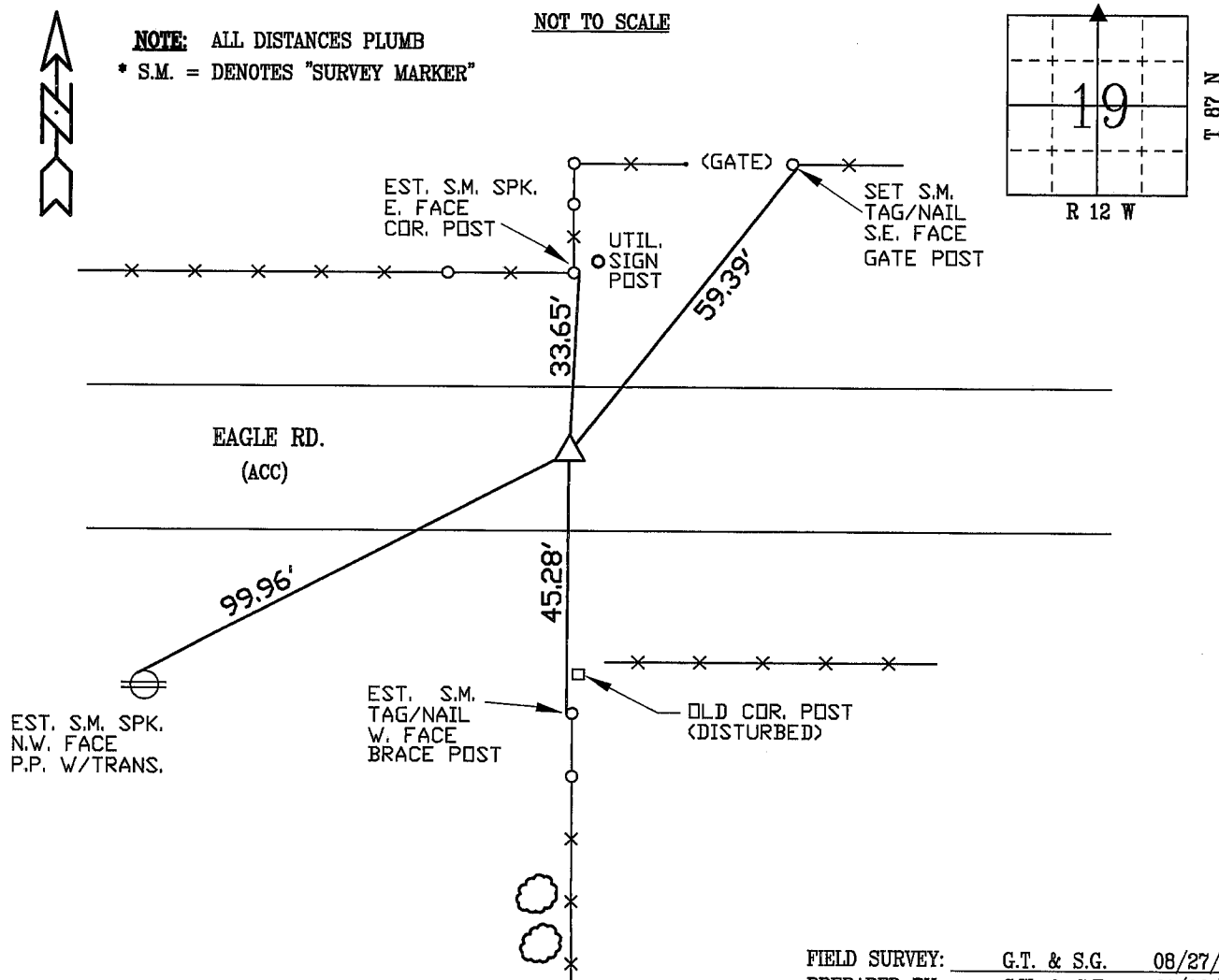
UNITED STATES PUBLIC LAND SURVEY CORNER CERTIFICATE OF  
Land Survey Monuments situated in Section 19, Township 87 N,  
Range 12 W, of the Fifth Principal Meridian, BLACK HAWK County, Iowa.  
Previously recorded in Misc. Book N/A, Page N/A, in County Recorder's Office.

(Show reason for preparing this certificate, the evidence and detailed procedures used in establishing the corner positions and monumentation found or placed.)

Monument Description and Remarks: N. 1/4 CORNER SECT. 19-87-12  
FND. 5/8" RBR. PRIOR TO RESURF. PROJ. (3 1/2" ACC SURF. AS PER PLAN).  
RESET 4 NEW REF. TIES AS DENOTED. EST. 5/8" x 6" L RBR. FLUSH w/ACC  
SURFACE AFTER 1999 RESURF. PROJECT.

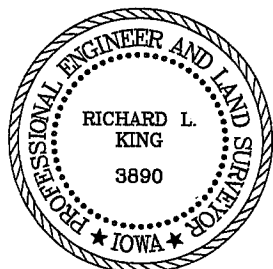
### PLAN - VIEW

(Show a minimum of three reference ties to durable physical objects, relevant monuments and physical conditions that will enable recovery of the corner.)



FIELD SURVEY: G.T. & S.G. 08/27/99  
PREPARED BY: C.W. & G.T. 01/06/00

### CERTIFICATION



I hereby certify that this land surveying document was prepared and the related survey work was performed by me or under my direct personal supervision and that I am a duly licensed Land Surveyor under the laws of the State of Iowa.

*Richard L. King* 1/6/00  
Richard L. King (date)

License Number 3890

My license renewal date is December 31, 2001

Pages or sheets covered by this seal:

This Land Corner Certificate Only.

### LIST CORNERS TO BE INDEXED

Corner	Section	Township	Range
N. 1/4	19	87 N	12 W