

Recorded

SLSI 9-90

UNITED STATES PUBLIC LAND SURVEY CORNER CERTIFICATE

OF

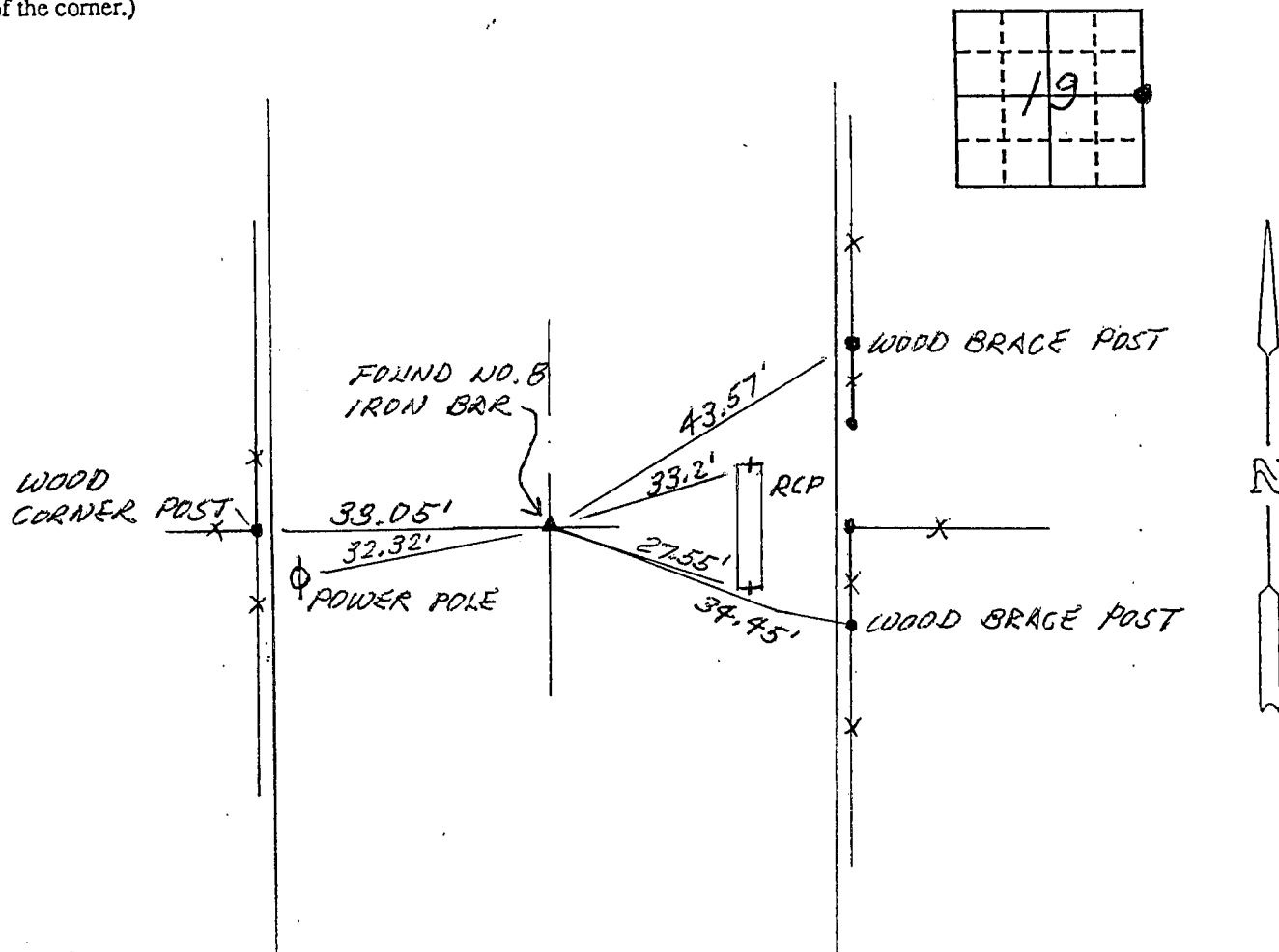
Land Survey Monuments situated in Section 19, Township 87 N, Range 12 W, of the Fifth Principal Meridian, BLACK HAWK County, Iowa.
Previously recorded in (not applicable) in County Recorder's Office.

(Show reason for preparing this certificate, the evidence and detailed procedures used in establishing the corner positions and monumentation found or placed.)

Monument Description and Remarks: FOUND NO. 8 IRON BAR.
SET NEW TIES

PLAN - VIEW

(Show a minimum of three reference ties to durable physical objects, relevant monuments and physical conditions that will enable recovery of the corner.)

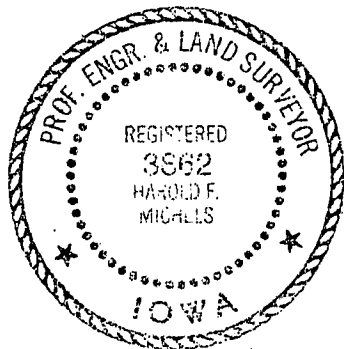


I hereby certify that the survey work was completed and this certificate was prepared by me or under my direct personal supervision and that I am a duly registered land surveyor under the laws of the state of Iowa.

Signature: Harold F. Michels
Name typed or printed: Harold F. Michels

Date: NOV. 3, 1992 Reg. No. 3862

SEAL



Corners	List Corners to be Indexed	Section	Twp	Range
SE OF NE 4	19	87	12	

MISC. BK 303 p. 656