

2025-13867
RECORDED: 09/22/2025 11:27:58 AM
RECORDING FEE: \$7.00
IOWA E-FILING FEE: \$3.13
COMBINED FEE: \$10.13
REVENUE TAX: \$0.00
SANDIE L. SMITH, RECORDER
BLACK HAWK COUNTY, IOWA

PREPARED BY/RETURN TO: JACOB A. LUZUM, 91 WEST, LLC, 2920 150th STREET, TRAEER, IOWA 50675 (319) 420-0184

UNITED STATES PUBLIC LAND SURVEY CORNER CERTIFICATE

LAND SURVEY MONUMENTS SITUATED IN SECTION NO 19, TOWNSHIP NO 87 NORTH, RANGE NO 12 WEST OF THE FIFTH PRINCIPAL MERIDIAN, BLACK HAWK COUNTY, IOWA PREVIOUSLY RECORDED IN N/A

THIS CERTIFICATE IS BEING PREPARED IN COMPLIANCE WITH IOWA CODE CHAPTER 355.11 BECAUSE:

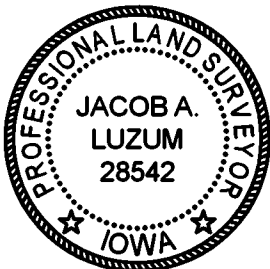
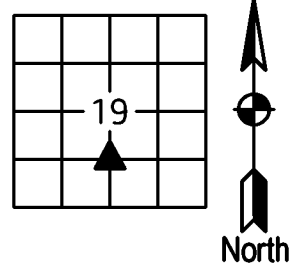
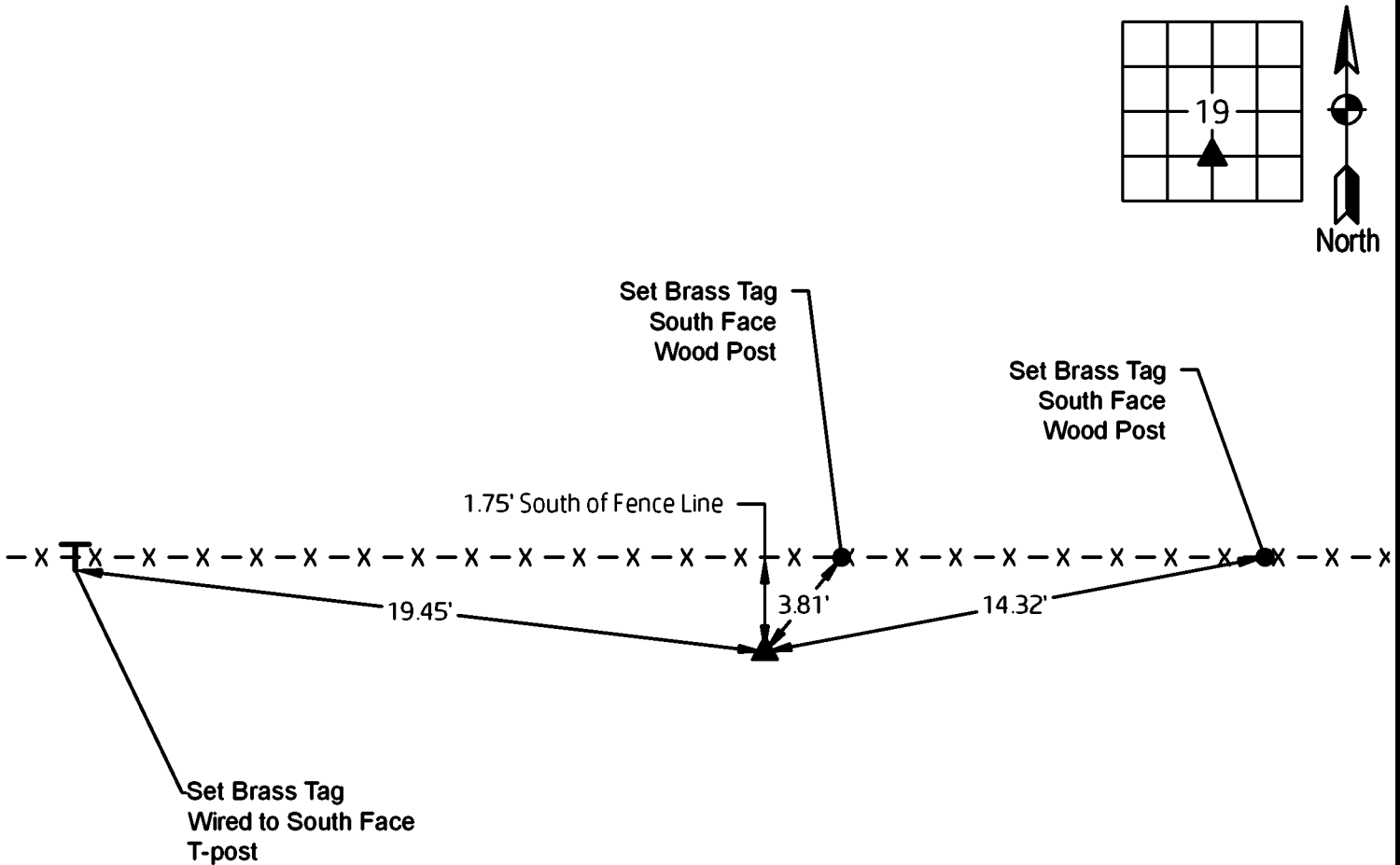
- THERE IS NO CERTIFICATE FOR THE CORNER ON FILE
- THE CORNER POSITION DIFFERS FROM PREVIOUS RECORD
- THE CORNER IS REPLACED OR MODIFIED
- EXISTING REFERENCE TIES ARE NOT CORRECT/NO LONGER THREE VALID REFERENCE TIES

MONUMENT DESCRIPTION AND REMARKS

NORTHEAST CORNER SE 1/4 SW 1/4: No Black Hawk County information available. Searched area, found nothing. Set No. 5 Rebar with 2" Aluminum Cap PLS #28542 on the West line of the Southeast Quarter at the intersection of the North line of the South Half of the Southeast Quarter. Said North line was established parallel to the South line of the Southeast Quarter since it aligns with an existing fence line and a found Stone in said North line per Black Hawk County Engineer Survey by John Ball on page 523. See Plat of Survey File 2025-12634. Corner falls 1.75' South of existing fence line. Survey completed in the SE 1/4 of Section 19-T87N-R12W.

PLAN VIEW

(SHOW A MINIMUM OF THREE REFERENCE TIES TO DURABLE PHYSICAL OBJECTS, RELEVANT MONUMENTS AND PHYSICAL CONDITIONS THAT WILL ENABLE RECOVERY OF THE CORNER)



I hereby certify that this land surveying document was prepared and the related survey work was performed by me or under my direct personal supervision and that I am a duly licensed Professional Land Surveyor under the laws of the State of Iowa.

Jacob A. Luzum 9/22/2025

 Date

Jacob A. Luzum
 License number 28542
 My license renewal date is December 31, 2026
 Pages or sheets covered by this seal: 1

LIST OF CORNERS TO BE INDEXED			
CORNER	SECTION	TOWNSHIP	RANGE
NE CORNER SE 1/4 SW 1/4	19	87N	12W
SE CORNER NE 1/4 SW 1/4	19	87N	12W
SW CORNER NW 1/4 SE 1/4	19	87N	12W
NW CORNER SW 1/4 SE 1/4	19	87N	12W

Drawing Scale: Not to Scale
 Drawn By: JAL
 Project No. 25-021

91 WEST, LLC
 2920 150th Street | (319) 420-0184
 Traer, Iowa 50675 | 91westsurveying@gmail.com

Brass Tag: 6d Nail with 1"Ø Tag PLS #28542
 (0.0) Recorded Dimension
 Page 1 of 1