

EW

WAYNE CLAASSEN ENGINEERING AND SURVEYING, INC.
P.O. BOX 898 WATERLOO, IOWA 50704-0898

PHONE: (VOICE) 319-235-6294
(FAX) 319-235-0028

UNITED STATES PUBLIC LAND SURVEY CORNER CERTIFICATE

Land Survey Monuments situated in Section 18, Township 87 North, Range 12 West, of the Fifth Principal Meridian, Black Hawk County, Iowa.

Previously recorded in Misc. 335-453 in County Recorder's Office.
(book, page, document number, etc.)

Monument Description and Remarks

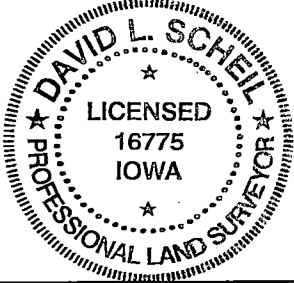
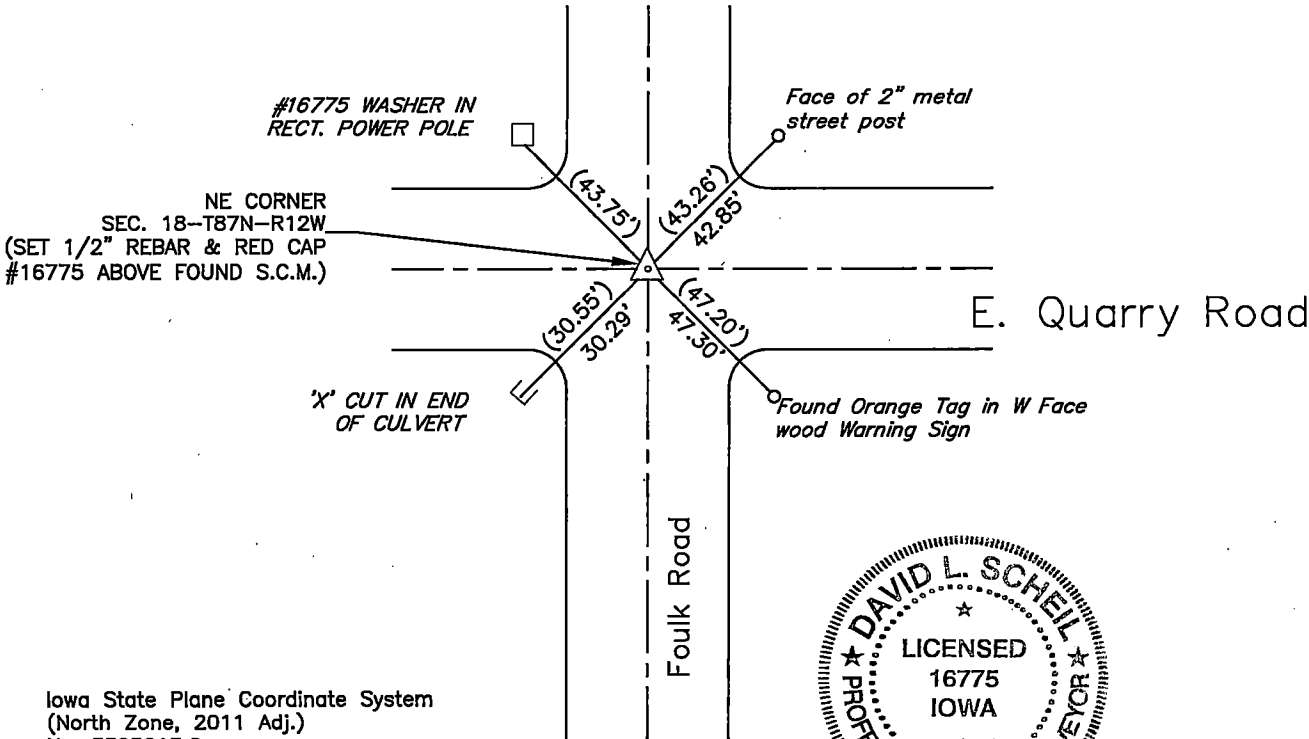
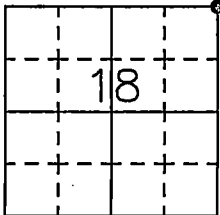
Went to location of NE Corner and found standard concrete monument 17" deep as per above. Section Corner Certificate. Set 1/2"x 15" rebar and red cap #16775 above said monument.

PLAN - VIEW

Reason for filing certificate:

- ☐ There is no certificate on file with the Recorder's Office.
- ☐ Accepts corner position which differs from the one shown in above document.
- ☒ The corner monument was replaced or modified.
- ☐ The reference ties in above document were incorrect or missing.

000.00 DENOTES RECORD DIMENSION
FROM CC MISC. BOOK 335-453
(000.00) DENOTES FIELD DIMENSION



737-65

I hereby certify that this land surveying document was prepared and the related survey work was performed by me or under my direct personal supervision and that I am a duly Licensed Land Surveyor under the laws of the State of Iowa.

Signature: David L. Schell
David L. Schell, L.S.
Date: July 30, 2019 Lic. No. 16775

Pages or Sheets Covered by this Seal: THIS SHEET ONLY.

My license renewal date is December 31, 2020

SEAL

List Corners to be Indexed

Corners	Section	Twp	Range
NE CORNER,	18	87 N	12 W
NW CORNER,	17	87 N	12 W
SW CORNER,	08	87 N	12 W
SE CORNER,	07	87 N	12 W