

File **2020-00002279**

PHONE: (VOICE) 319-235-6294.
(FAX) 319-235-0028

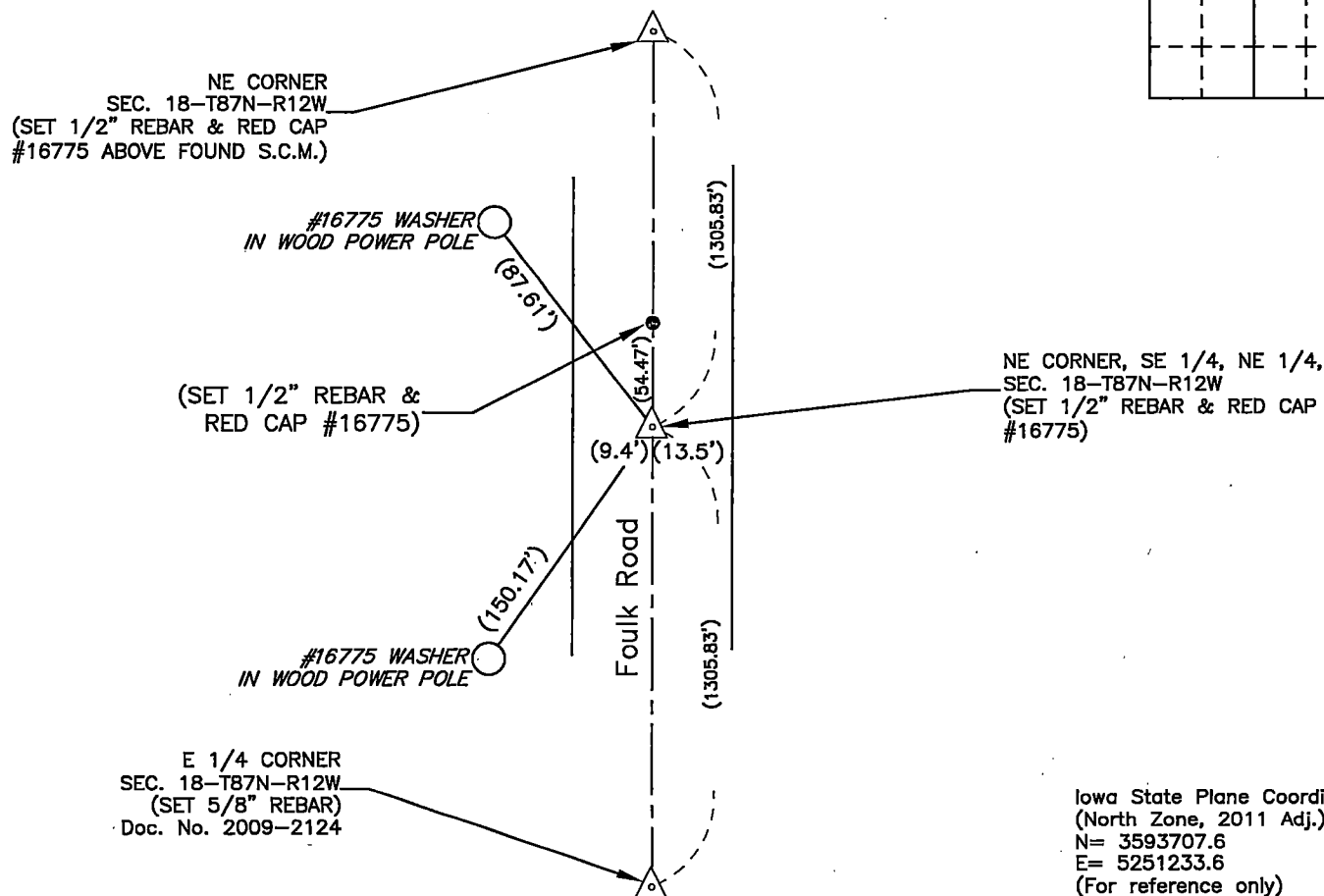
EW*

Monument Description and Remarks

Set 1/2" rebar & red cap #16775 at midpoint between NE Corner and E 1/4 Corner of this Section.

Reason for filing certificate:

- ☒ There is no certificate on file with the Recorder's Office.
☐ Accepts corner position which differs from the one shown in above document.
☐ The corner monument was replaced or modified.
☐ The reference ties in above document were incorrect or missing.



Iowa State Plane Coordinate System
(North Zone, 2011 Adj.)
N= 3593707.6
E= 5251233.6
(For reference only)

I hereby certify that this land surveying document was prepared and the related survey work was performed by me or under my direct personal supervision and that I am a duly Licensed Land Surveyor under the laws of the State of Iowa.

David L. Scheil, L.S.

Date: July 30, 2019 Lic. No. 16775

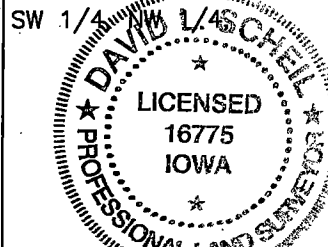
Pages or Sheets Covered by this Seal: THIS SHEET ONLY.

My license renewal date is December 31, 2020

SEAL

Corners	Section	Twp	Range
NE CORNER, SE 1/4, NE 1/4,	18	87 N	12 W

NW CORNER 17 87 N 12 W



File Number: 2020-00002279 Seq: 1