

MISC
INDEX *B*
MARGIN
PROOF *Rec*
COMPARE

BLACK HAWK COUNTY IOWA:SS.
Filed for record AUG 6, 1999 at
4:00 P.M. and recorded in Book 335
of MISC at page 453.

Christina S. Deas Recorder
FEE 1-5.00/
HELLAND ENGINEERING & SURVEYING

Paul H. Helland, 1107 Technology Parkway, Cedar Falls, Iowa 50613-6951, (319)-266-0161

UNITED STATES PUBLIC LAND SURVEY CORNER CERTIFICATE OF

LAND SURVEY MONUMENTS SITUATED IN SECTION NO. 18, TOWNSHIP NO. 87 NORTH, RANGE
NO. 12 WEST OF THE FIFTH PRINCIPAL MERIDIAN, BLACK HAWK COUNTY, IOWA.

PREVIOUSLY RECORDED IN BOOK _____, PAGE _____.

(SHOW REASON FOR PREPARING THIS CERTIFICATE, THE EVIDENCE AND DETAILED PROCEDURES USED IN ESTABLISHING THE
CORNER POSITIONS AND MONUMENTATION FOUND OR PLACED.)

MONUMENT DESCRIPTION AND REMARKS:

SURVEY DONE IN W 1/2 NE 1/4 OF SEC. 18-T87N-R12W

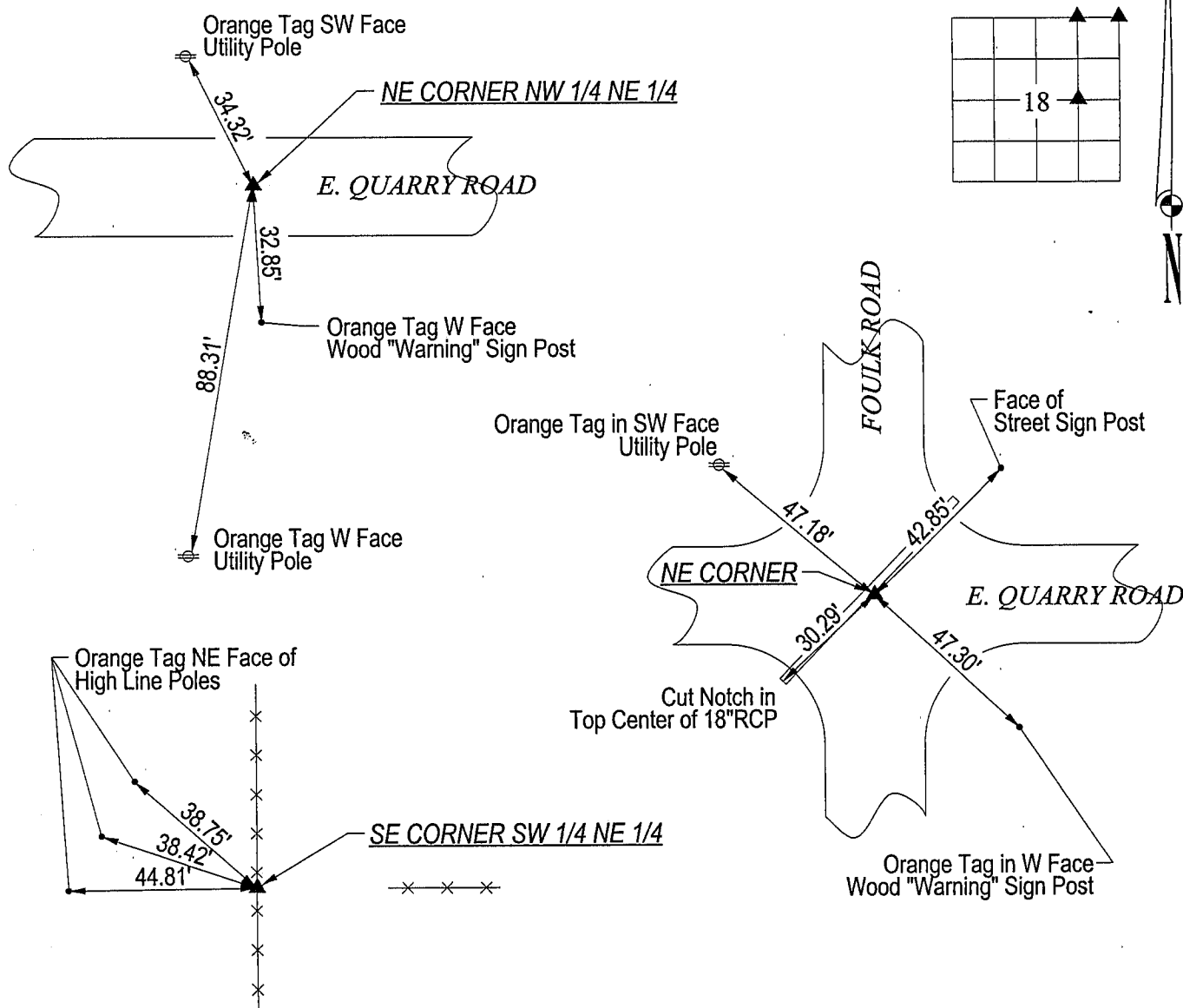
NE CORNER: NO COUNTY TIES REMAIN, FOUND CONCRETE MONUMENT W/BRASS CAP 0.9' DEEP, SET NO. 4 REBAR
ON NORTH SIDE FOR MAGNETIC DETECTION.

NE CORNER NW 1/4 NE 1/4: SET NO. 4 REBAR @ SPLIT ON LINE BETWEEN N 1/4 CORNER & NE CORNER OF SECTION NO. 18.

SE CORNER SW 1/4 NE 1/4: SET NO. 4 REBAR IN BROKEN OFF 3"Ø STEEL CORNER POST IN CONCRETE (POST LEANING WLY)

PLAN VIEW

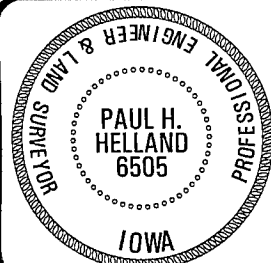
(SHOW A MINIMUM OF THREE REFERENCE TIES TO DURABLE PHYSICAL OBJECTS, RELEVANT MONUMENTS AND PHYSICAL
CONDITIONS THAT WILL ENABLE RECOVERY OF THE CORNER.)



HES

HELLAND ENGINEERING & SURVEYING, LTD.
1107 Technology Parkway
Cedar Falls, Iowa 50613-6951
(319)-266-0161

FILE NAME: 99-241CC.DRG



I hereby certify that this land surveying document was prepared
and the related survey work was performed by me or under my
direct personal supervision and that I am a duly licensed Land
Surveyor under the laws of the State of Iowa.

Paul H. Helland
Paul H. Helland
License Number 6505
My license renewal date is December 31, 1999.
All pages or sheets are covered by this seal except:

LIST CORNERS TO BE INDEXED

CORNER	SECTION	TOWNSHIP	RANGE
NE CORNER	18	87N	12W
NE CORNER NW 1/4 NE 1/4	18	87N	12W
SE CORNER SW 1/4 NE 1/4	18	87N	12W