

* Michael R. Fagle, L.S.

AECOM, 501 Sycamore St., Suite 222, Waterloo, Iowa 50703

1-319-232-6531

UNITED STATES PUBLIC LAND SURVEY CORNER CERTIFICATE OF

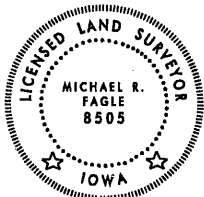
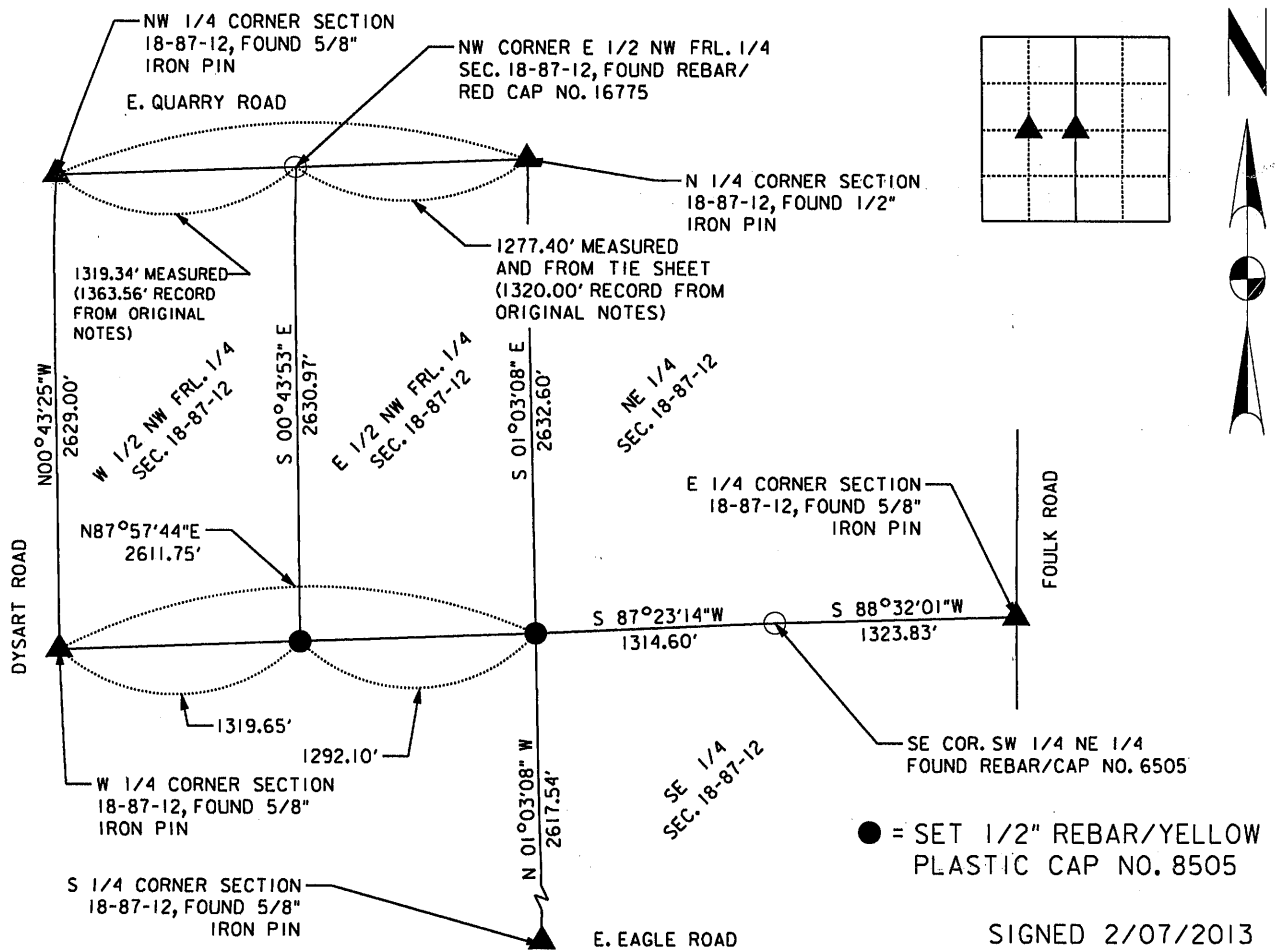
Land Survey Monuments situated in Section 18, Township 87,
Range 12 WEST, of the Fifth Principal Meridian, BLACK HAWK
County, Iowa. Previously recorded in NO RECORD TIES
in County Recorder's Office. (Book, Page, Document Number, etc.)

(Show reason for preparing this certificate, the evidence and detailed procedures used in establishing the corner positions and monumentation found or placed.)

Monument Description and Remarks: SET 1/2" X 24" REBAR WITH YELLOW PLASTIC CAP NO. 8505 AT THE SOUTHEAST CORNER OF THE WEST 1/2 AND SOUTHEAST CORNER OF THE EAST 1/2 OF THE NORTHWEST FRACTIONAL 1/4 OF SECTION 18, TOWNSHIP 87 NORTH, RANGE 12 WEST OF THE 5TH P.M., COUNTY OF BLACK HAWK, STATE OF IOWA. THERE WERE NOT ANY PHYSICAL OBJECT NEAR BY TO TIE TO, SO TIES ARE FROM FOUND SECTION CORNERS. SEE SURVEY RECORDED IN FEE BOOK 2006 27378 IN THE BLACK HAWK COUNTY RECORDER'S OFFICE.

PLAN - VIEW

(Show a minimum of three reference ties to durable physical objects, relevant monuments and physical conditions that will enable recovery of the corner.)



I hereby certify that this Land Surveying document was prepared by me or under my direct personal supervision and that I am a duly Licensed Land Surveyor under the laws of the State of Iowa.

Michael R. Fagle 2-07-2013
MICHAEL R. FAGLE Date

License number 8505

My license renewal date is December 31, 2014

Pages or sheets covered by this seal:
THIS SHEET

List Corners to be Indexed

Corners	Section	Twp	Range
SOUTHEAST CORNER WEST 1/2 OF THE NORTHWEST FRACTIONAL 1/4	18	T 87 N	R 12 W
SOUTHEAST CORNER EAST 1/2 OF THE NORTHWEST FRACTIONAL 1/4	18	T 87 N	R 12 W