



Doc ID: 003765010001 Type: GEN
Recorded: 05/08/2009 at 09:36:07 AM
Fee Amt: \$7.00 Page 1 of 1
Instr# 200800026440
Black Hawk County Iowa
JUDITH A MCCARTHY RECORDER
Book 1080 Page 39922 - 39922

File **2009-00021241**

W WAYNE CLAASSEN ENGINEERING AND SURVEYING, INC.
P.O. BOX 898 WATERLOO, IOWA 50704-0898

PHONE: (VOICE) 319-235-6294
(FAX) 319-235-0028

UNITED STATES PUBLIC LAND SURVEY CORNER CERTIFICATE

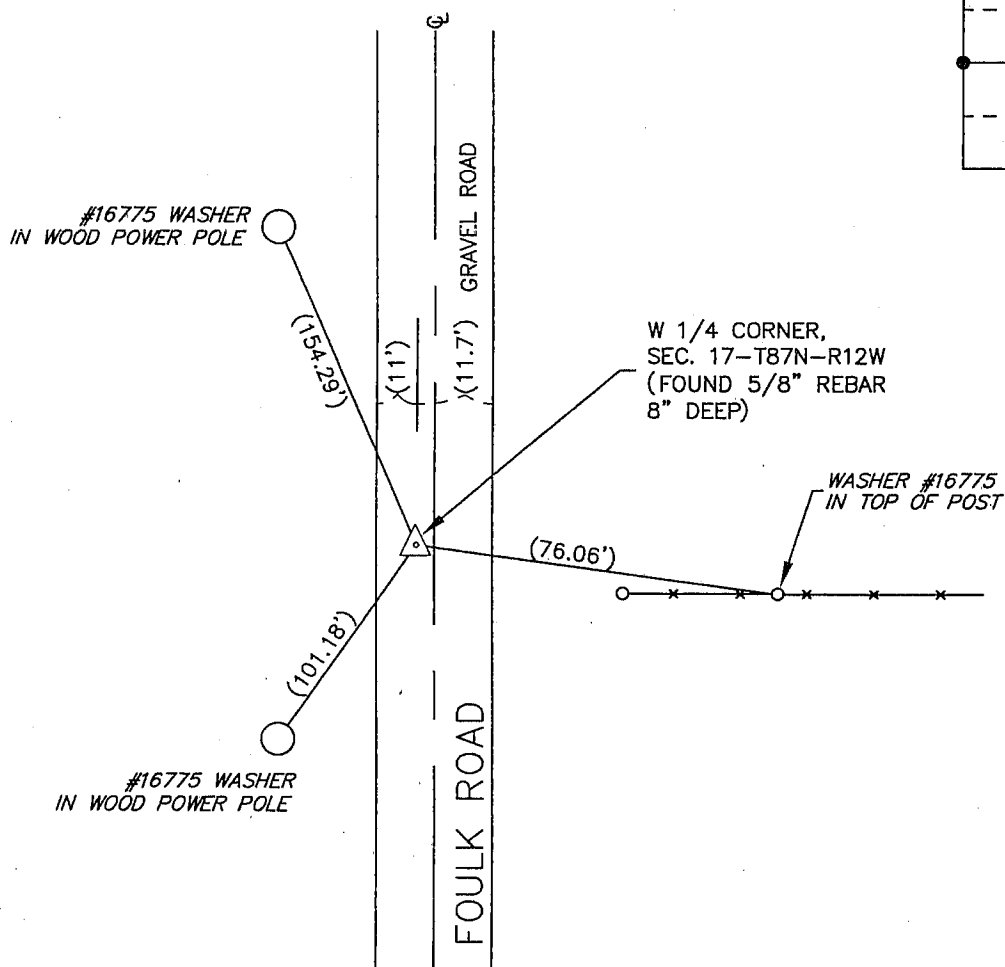
Land Survey Monuments situated in Section 17, Township 87 North, Range 12 West, of the Fifth Principal Meridian, Black Hawk County, Iowa.

Previously recorded in Misc. Bk. 298, Pg. 519 in County Recorder's Office.
(book, page, document number, etc.)

Monument Description and Remarks

References in above corner certificate are missing. Retied section corner.

PLAN - VIEW



BK 636, PG. 79

I hereby certify that this land surveying document was prepared and the related survey work was performed by me or under my direct personal supervision and that I am a duly Licensed Land Surveyor under the laws of the State of Iowa.

Signature: David L. Scheil

David L. Scheil, L.S.

Date: APRIL 30, 2009 Lic. No. 16775

Pages or Sheets Covered by this Seal: THIS SHEET ONLY.

My license renewal date is December 31, 2010

SEAL

List Corners to be Indexed

Corners	Section	Twp	Range
W 1/4 CORNER,	17	87 N	12 W

