

Jeffrey P. Helland, 1107 Technology Parkway, Cedar Falls, Iowa 50613-6951, (319)-266-0161

UNITED STATES PUBLIC LAND SURVEY CORNER CERTIFICATE  
OFLAND SURVEY MONUMENTS SITUATED IN SECTION NO. 17, TOWNSHIP NO. 87 NORTH, RANGE  
NO. 12 WEST OF THE FIFTH PRINCIPAL MERIDIAN, BLACK HAWK COUNTY, IOWA.PREVIOUSLY RECORDED IN 297 MISC. 247.(SHOW REASON FOR PREPARING THIS CERTIFICATE, THE EVIDENCE AND DETAILED PROCEDURES USED IN ESTABLISHING THE  
CORNER POSITIONS AND MONUMENTATION FOUND OR PLACED.)

## MONUMENT DESCRIPTION AND REMARKS:

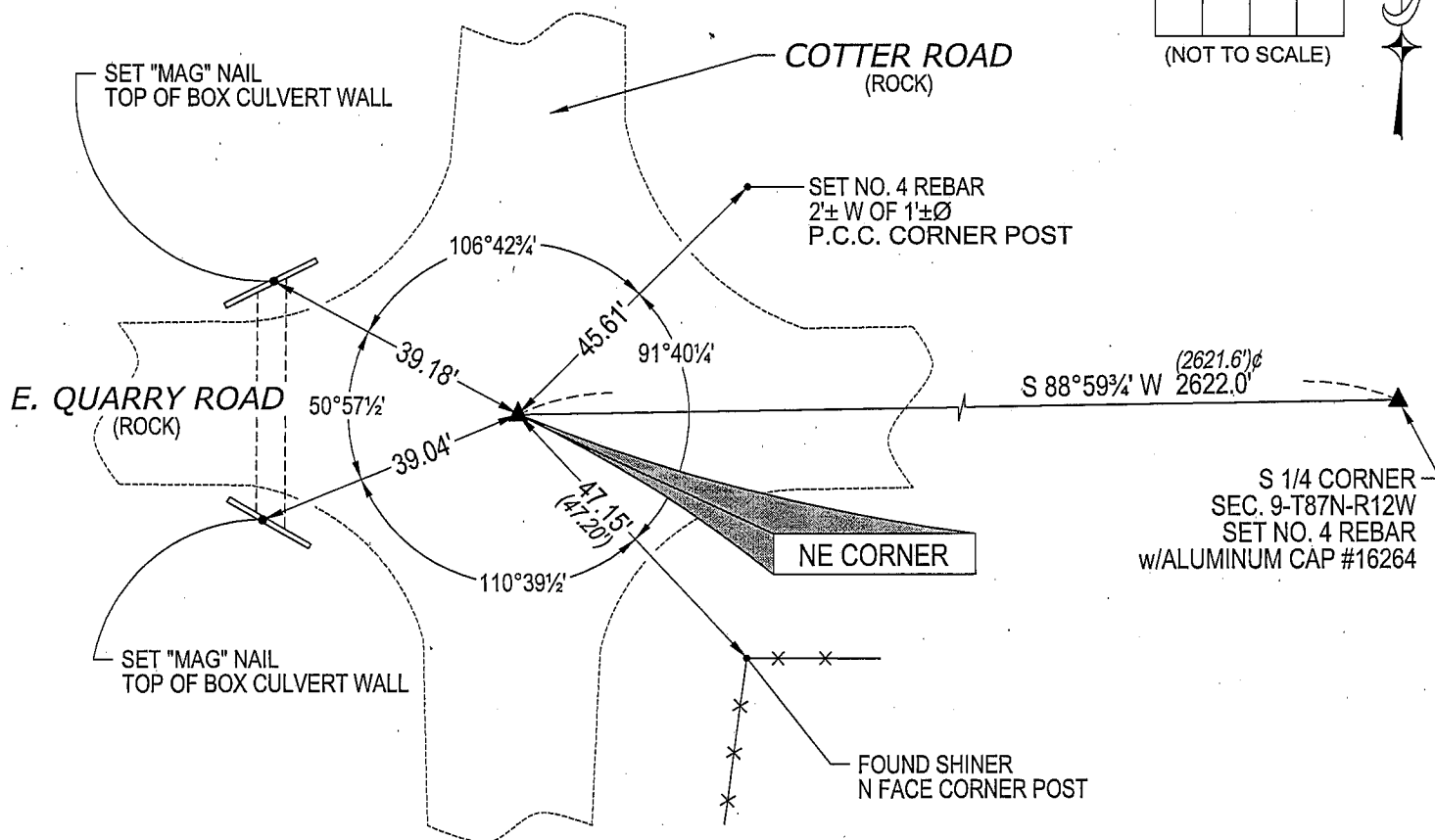
USPLSCC 297 MISC. 247 MONUMENTATION AND REFERENCE TIES HAVE CHANGED. SURVEY COMPLETED IN  
THE SE 1/4 OF SEC. 9-T87N-R12W.

**NE CORNER:** NO BLACK HAWK COUNTY ENGINEER REFERENCE TIES AVAILABLE. WPA CHAINING NOTES  
DATED 8/22/41 CALL FOR [C.M.]. USPLSCC 297 MISC. 247 CALLS FOR [FOUND NO. 6 REBAR]. FOUND NO. 6  
REBAR (1' LONG) THAT WAS LEANING NORTHERLY. TIED OUT, REMOVED & FOUND A STANDARD CONCRETE  
MONUMENT w/BRASS CAP (ILLEGIBLE) AT A DEPTH OF 1.7 FEET. TOP OF NO. 6 REBAR WAS WITHIN 0.1'Ø OF  
BEING ABOVE THE CENTER OF FOUND C.M. SET NO. 4 REBAR (1.4' LONG) w/ALUMINUM CAP #16264 DIRECTLY  
ON TOP OF SAID C.M. TOP OF SAID NO. 4 IS CURRENTLY 0.3' DEEP.

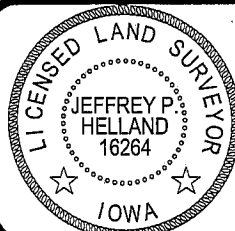
(SHOW A MINIMUM OF THREE REFERENCE TIES TO DURABLE PHYSICAL OBJECTS, RELEVANT MONUMENTS AND PHYSICAL  
CONDITIONS THAT WILL ENABLE RECOVERY OF THE CORNER.)

## PLAN VIEW

(0.0')Ø PER WPA CHAINING NOTES DATED 8/22/41



(BEARINGS ARE ASSUMED)

HELLAND ENGINEERING & SURVEYING, LTD.  
1107 Technology Parkway  
Cedar Falls, Iowa 50613-6951  
(319)-266-0161SHINER = 8D NAIL & 1 5/16"Ø METAL SHINER  
BRASS TAG = 13/16"Ø BRASS TAG  
OPC = PLASTIC CAP (O=ORANGE, R=RED, Y=YELLOW)  
(00') RECORDED AS FILE NAME: 07-268C1.DWGI hereby certify that this land surveying document was prepared  
and the related survey work was performed by me or under my  
direct personal supervision and that I am a duly licensed Land  
Surveyor under the laws of the State of Iowa.Jeffrey P. Helland 11/28/07  
Jeffrey P. Helland  
License Number 16264  
My license renewal date is December 31, 2007.  
All pages or sheets are covered by this seal except:

## LIST CORNERS TO BE INDEXED

CORNER	SECTION	TOWNSHIP	RANGE
NE CORNER	17	87N	12W