

Paul H. Helland, 1107 Technology Parkway, Cedar Falls, Iowa 50613-6951, (319)-266-0161

UNITED STATES PUBLIC LAND SURVEY CORNER CERTIFICATE OF

LAND SURVEY MONUMENTS SITUATED IN SECTION NO. 16, TOWNSHIP NO. 87 NORTH, RANGE
NO. 12 WEST OF THE FIFTH PRINCIPAL MERIDIAN, BLACK HAWK COUNTY, IOWA.
PREVIOUSLY RECORDED IN N/A

(SHOW REASON FOR PREPARING THIS CERTIFICATE, THE EVIDENCE AND DETAILED PROCEDURES USED IN ESTABLISHING THE
CORNER POSITIONS AND MONUMENTATION FOUND OR PLACED.)

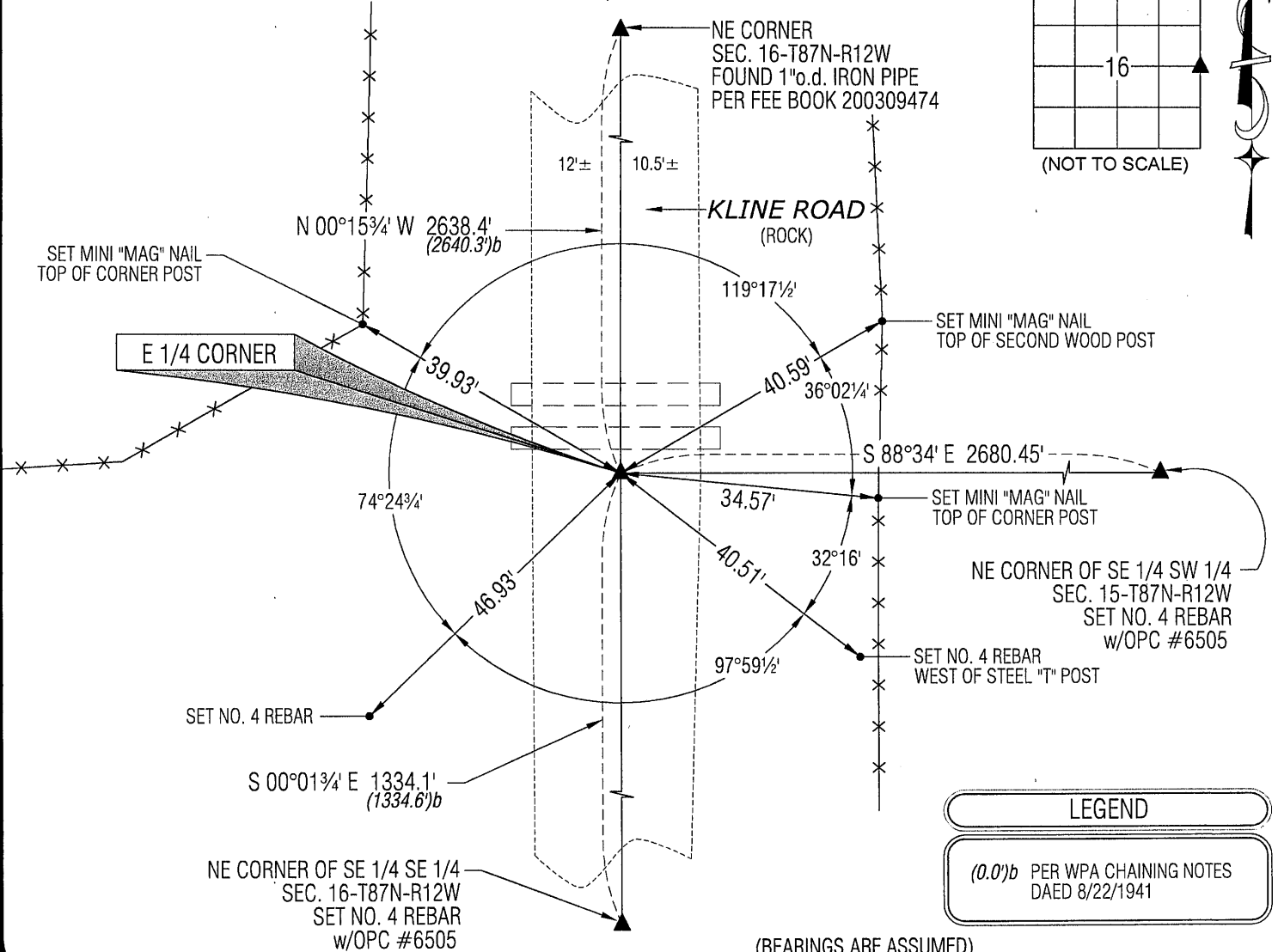
MONUMENT DESCRIPTION AND REMARKS:

NO USPLSCC ON FILE. SURVEY COMPLETED IN THE SW 1/4 OF SEC. 15-T87N-R12W.

→ **E 1/4 CORNER:** JOHN BALL SURVEY BOOK PAGE 317 DATED 5/29/1868 CALLS FOR [STAKE & STONE SET AT OLD 1/4 SEC
COR]. WPA CHAINING NOTES DATED 8/22/41 CALLS FOR [C.M. 1.7' E. OF R.L.]. BLACK HAWK COUNTY ENGINEER'S NOTES
NO DATE CALLS FOR [CONCRETE MONUMENT]. SEARCHED AND EXCAVATED TO A DEPTH OF 4'± AT PRORATED CHAINING
NOTES AND IN LINE WITH FENCE RUNNING WEST, FOUND REMANENCE OF LIMESTONE. THOUGHT CONCRETE MONUMENT
WAS DESTROYED WHEN NEW REINFORCED CONCRETE PIPE WAS INSTALLED TO THE NORTH OF CORNER, THEREFORE SET
NO. 4 REBAR w/OPC #6505 OVER SAID LIMESTONE REMANENCE, SAID LOCATION FITS RANDOM LINE AND PRORATED
DISTANCE FROM SOUTHEAST CORNER TO NORTHEAST CORNER PER WPA CHAINING NOTES.

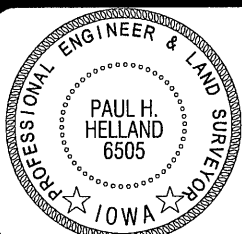
PLAN VIEW

(SHOW A MINIMUM OF THREE REFERENCE TIES TO DURABLE PHYSICAL OBJECTS, RELEVANT MONUMENTS AND PHYSICAL
CONDITIONS THAT WILL ENABLE RECOVERY OF THE CORNER.)



HELLAND ENGINEERING & SURVEYING, LTD.
1107 Technology Parkway
Cedar Falls, Iowa 50613-6951
(319)-266-0161

SHINER = 8D NAIL & 1 5/16"Ø METAL SHINER
BRASS TAG = 8D NAIL & 13/16"Ø BRASS TAG
OPC = PLASTIC CAP (O=ORANGE, R=RED, Y=YELLOW)
(00') RECORDED AS FILE NAME: 12-265-26.DWG



I hereby certify that this land surveying document was prepared
and the related survey work was performed by me or under my
direct personal supervision and that I am a duly licensed Land
Surveyor under the laws of the State of Iowa.

Paul H. Helland
License Number 6505
My license renewal date is December 31, 2013.
All pages or sheets are covered by this seal except:

LIST CORNERS TO BE INDEXED

CORNER	SECTION	TOWNSHIP	RANGE
E 1/4 CORNER	16	87N	12W
W 1/4 CORNER	15	87N	12W