

MISC
INDEX
MARGIN
PROOF
COMPARE

BLACK HAWK COUNTY IOWA:SS 022822
Filed for record MAY 4, 2001 at
4:00 P.M. and recorded in Book 342
of MISC at Page 586
RECORDED
FEE 1-5.00X/.
HELLAND ENGINEERING & SURVEYING LTD

Paul H. Helland, 1107 Technology Parkway, Cedar Falls, Iowa 50613-6951, (319)-266-0161

UNITED STATES PUBLIC LAND SURVEY CORNER CERTIFICATE OF

LAND SURVEY MONUMENTS SITUATED IN SECTION NO. 15, TOWNSHIP NO. 87 NORTH, RANGE
NO. 12 WEST OF THE FIFTH PRINCIPAL MERIDIAN, BLACK HAWK COUNTY, IOWA.
PREVIOUSLY RECORDED IN BOOK , PAGE .

(SHOW REASON FOR PREPARING THIS CERTIFICATE, THE EVIDENCE AND DETAILED PROCEDURES USED IN ESTABLISHING THE
CORNER POSITIONS AND MONUMENTATION FOUND OR PLACED.)

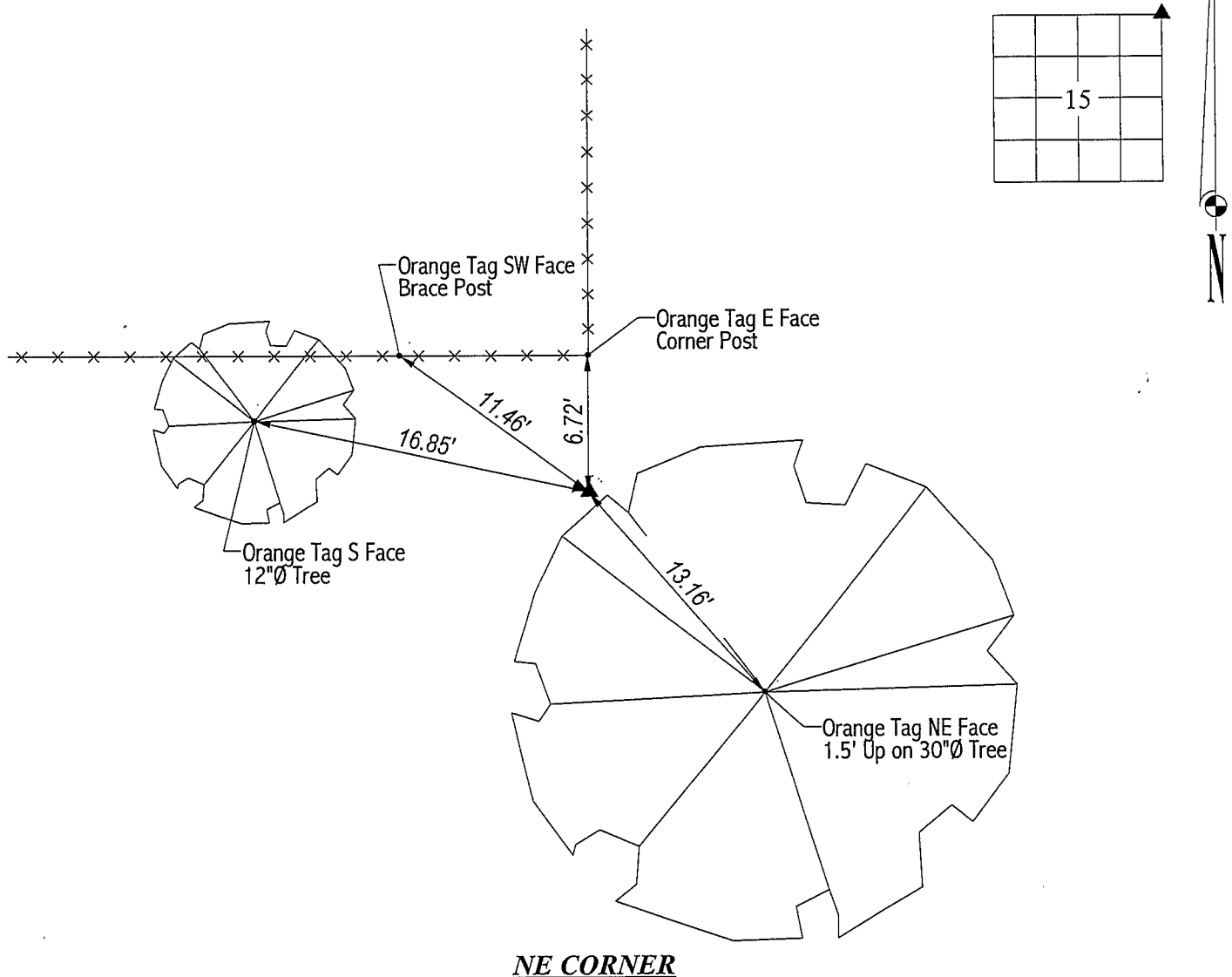
MONUMENT DESCRIPTION AND REMARKS:

SURVEY DONE IN E 1/2 OF SEC. 15-T87N-R12W.

NE CORNER: All county reference ties obliterated. After measureing from Youngerman chaining notes dated 7/24/1941,
dug 2.5'x9'x2.5' deep hole. Found concrete monument w/brass cap 0.7' deep. Set No. 4 rebar @ North side for
magnetic detection. Set T-post to the North of corner. Corner is 2625.15' North of E 1/4 Corner per Misc. 335-185.

PLAN VIEW

(SHOW A MINIMUM OF THREE REFERENCE TIES TO DURABLE PHYSICAL OBJECTS, RELEVANT MONUMENTS AND PHYSICAL
CONDITIONS THAT WILL ENABLE RECOVERY OF THE CORNER.)

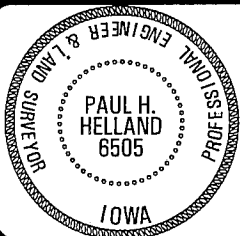


NE CORNER



HELLAND ENGINEERING & SURVEYING, LTD.
1107 Technology Parkway
Cedar Falls, Iowa 50613-6951
(319)-266-0161

FILE NAME: 01-161CC.DRG



I hereby certify that this land surveying document was prepared
and the related survey work was performed by me or under my
direct personal supervision and that I am a duly licensed Land
Surveyor under the laws of the State of Iowa.

Paul H. Helland 5/1/01
Paul H. Helland
License Number 6505
My license renewal date is December 31, 2001.
All pages or sheets are covered by this seal except:

LIST CORNERS TO BE INDEXED			
CORNER	SECTION	TOWNSHIP	RANGE
NE CORNER	15	87N	12W