

PROOF FILED FOR RECORD OCT 8, 2002, AT 4:00 P. M. FEE 1-5.00/

COMPARED

*Paul H. Helland*

BLACK HAWK COUNTY RECORDER

PAUL HELLAND

Paul H. Helland, 1107 Technology Parkway, Cedar Falls, Iowa 50613-6951, (319)-266-0161

UNITED STATES PUBLIC LAND SURVEY CORNER CERTIFICATE  
OFLAND SURVEY MONUMENTS SITUATED IN SECTION NO. 15, TOWNSHIP NO. 87 NORTH, RANGE  
NO. 12 WEST OF THE FIFTH PRINCIPAL MERIDIAN, BLACK HAWK COUNTY, IOWA.

PREVIOUSLY RECORDED IN BOOK \_\_\_\_\_, PAGE \_\_\_\_\_.

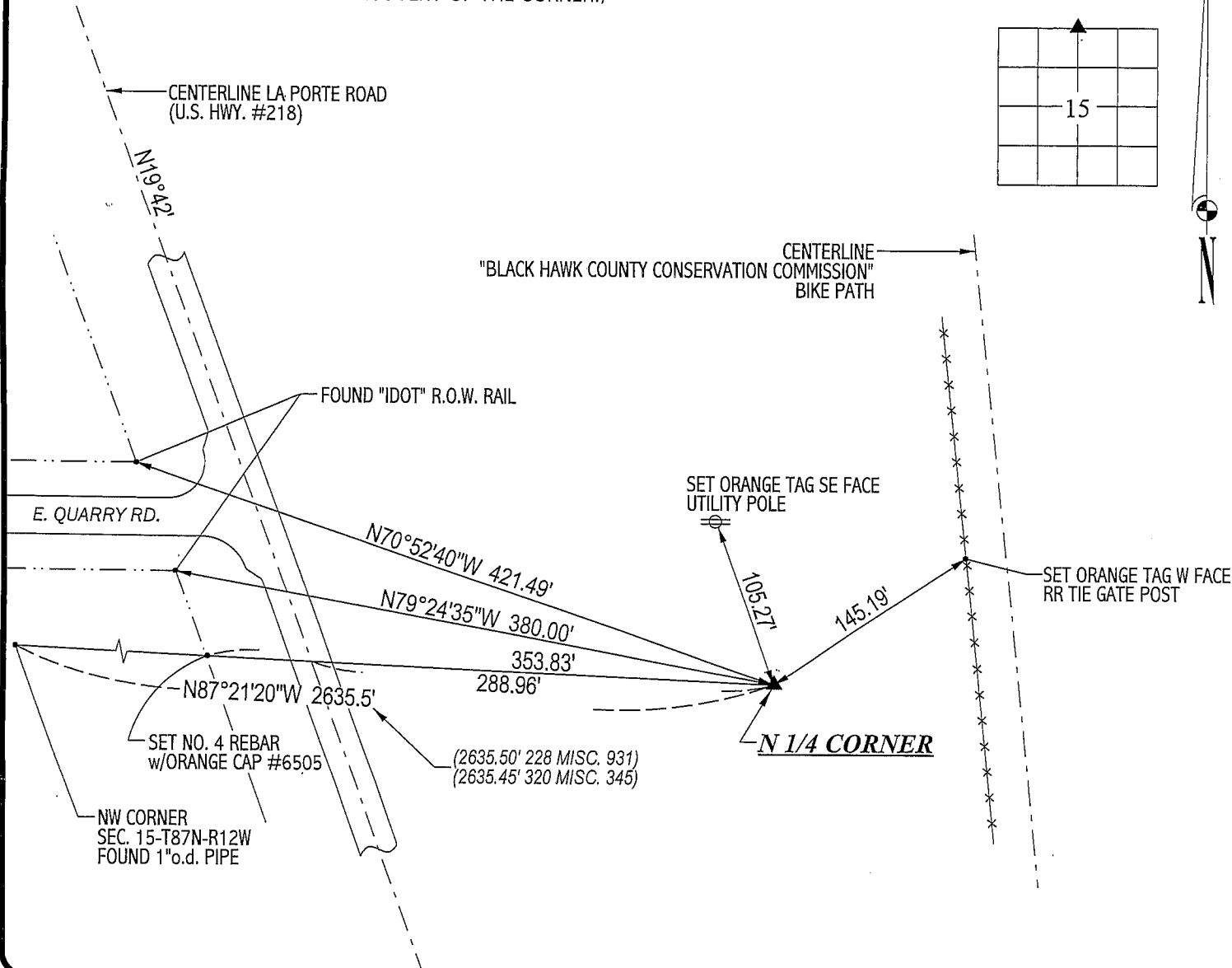
(SHOW REASON FOR PREPARING THIS CERTIFICATE, THE EVIDENCE AND DETAILED PROCEDURES USED IN ESTABLISHING THE  
CORNER POSITIONS AND MONUMENTATION FOUND OR PLACED.)

## MONUMENT DESCRIPTION AND REMARKS:

NO CORNER CERTIFICATE ON FILE. SURVEY DONE IN SW 1/4 OF SEC. 10-T87N-R12W &amp; NW 1/4 OF SEC. 15-T87N-R12W.

→ N 1/4 CORNER: FOUND CONCRETE MONUMENT w/BRASS CAP 0.6' DEEP IN CULTIVATED FIELD (MAGNETIC SOUNDING ON THE NORTH SIDE  
OF CONCRETE MONUMENT). WPA CHAINING NOTES DATED 7/23/1941 STATES A RANDOM LINE DISTANCE FROM THE NW CORNER OF SEC. 15  
TO THE N 1/4 CORNER TO BE 2650.1' AND A 290' DISTANCE BETWEEN CENTERLINE OF HWY. #218 & N 1/4 CORNER. RANDOM LINE IS 101.9'  
SOUTH OF THE N 1/4 CORNER. DISTANCE BETWEEN THE NW CORNER & N 1/4 CORNER CORRESPONDS TO PLATS OF SURVEYS RECORDED  
IN 228 MISC. 931 & 320 MISC. 345.

## PLAN VIEW

(SHOW A MINIMUM OF THREE REFERENCE TIES TO DURABLE PHYSICAL OBJECTS, RELEVANT MONUMENTS AND PHYSICAL  
CONDITIONS THAT WILL ENABLE RECOVERY OF THE CORNER.)**HELLAND ENGINEERING & SURVEYING, LTD.**  
1107 Technology Parkway  
Cedar Falls, Iowa 50613-6951  
(319)-266-0161

FILE NAME: 02-283C1.DRG

I hereby certify that this land surveying document was prepared  
and the related survey work was performed by me or under my  
direct personal supervision and that I am a duly licensed Land  
Surveyor under the laws of the State of Iowa.*Paul H. Helland*  
Paul H. Helland  
License Number 6505  
My license renewal date is December 31, 2003.  
All pages or sheets are covered by this seal except:**LIST CORNERS TO BE INDEXED**  

CORNER	SECTION	TOWNSHIP	RANGE
N 1/4 CORNER	15	87N	12W