

INDEX *SF* BLACK HAWK COUNTY, IOWA:ss

FEE BOOK # 2003 07008

PROOF *AS* FILED FOR RECORD SEP 13, 2002, AT 10:30 A.M. FEE 1-5.00/

COMPARED

Patricia L. Hess

BLACK HAWK COUNTY RECORDER

HELLAND ENGINEERING & SURVEYING LTD

Paul H. Helland, 1107 Technology Parkway, Cedar Falls, Iowa 50613-6951, (319)-266-0161

UNITED STATES PUBLIC LAND SURVEY CORNER CERTIFICATE
OFLAND SURVEY MONUMENTS SITUATED IN SECTION NO. 15, TOWNSHIP NO. 87 NORTH, RANGE
NO. 12 WEST OF THE FIFTH PRINCIPAL MERIDIAN, BLACK HAWK COUNTY, IOWA.

PREVIOUSLY RECORDED IN BOOK _____, PAGE _____.

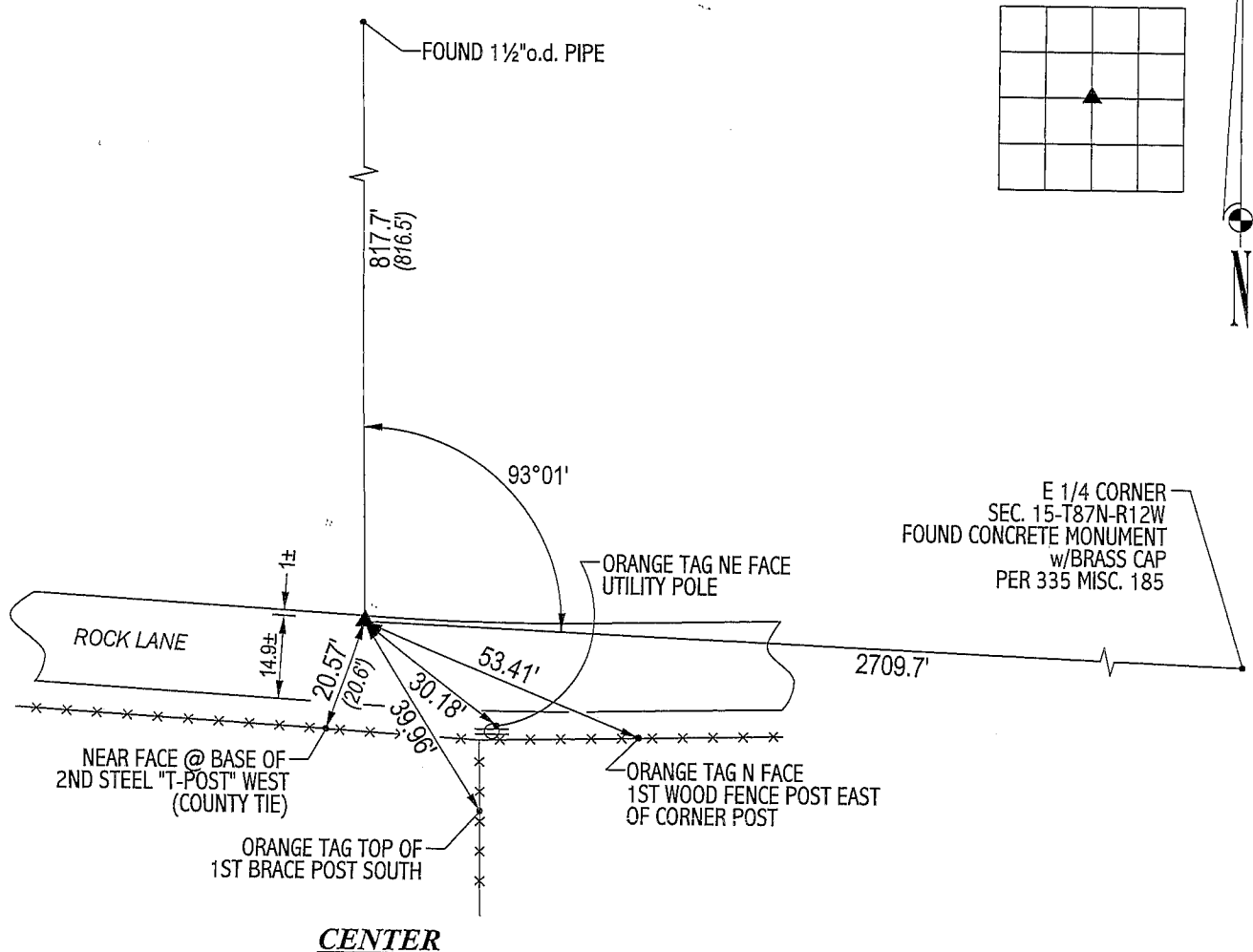
(SHOW REASON FOR PREPARING THIS CERTIFICATE, THE EVIDENCE AND DETAILED PROCEDURES USED IN ESTABLISHING THE
CORNER POSITIONS AND MONUMENTATION FOUND OR PLACED.)

MONUMENT DESCRIPTION AND REMARKS:

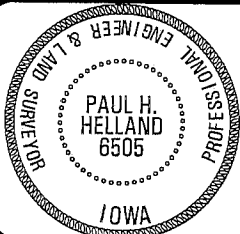
NO CORNER CERTIFICATE ON FILE. SURVEY DONE IN NE 1/4 OF SEC. 15-T87N-R15W.

→ CENTER: ONLY ONE BLACK HAWK COUNTY ENGINEER REFERENCE TIE (NO DATE) REMAINS. USING TIE FOUND 1½"o.d. PIPE
w/"MAG" NAIL IN CENTER. PIPE IS 0.6' DEEP. COUNTY TIES SHOW CENTER BEING NORTH & WEST OF FENCES AND NORTH OF
LANE (NO DISTANCES STATED).

PLAN VIEW

(SHOW A MINIMUM OF THREE REFERENCE TIES TO DURABLE PHYSICAL OBJECTS, RELEVANT MONUMENTS AND PHYSICAL
CONDITIONS THAT WILL ENABLE RECOVERY OF THE CORNER.)CENTERHELLAND ENGINEERING & SURVEYING, LTD.
1107 Technology Parkway
Cedar Falls, Iowa 50613-6951
(319)-266-0161

FILE NAME: 02-275CC.DRG

I hereby certify that this land surveying document was prepared
and the related survey work was performed by me or under my
direct personal supervision and that I am a duly licensed Land
Surveyor under the laws of the State of Iowa.*Paul H. Helland 9/19/02*
Paul H. Helland
License Number 6505
My license renewal date is December 31, 2003.
All pages or sheets are covered by this seal except:

LIST CORNERS TO BE INDEXED

CORNER	SECTION	TOWNSHIP	RANGE
CENTER	15	87N	12W