

Jeffrey P. Helland, 1107 Technology Parkway, Cedar Falls, Iowa 50613-6951, (319)-266-0161

UNITED STATES PUBLIC LAND SURVEY CORNER CERTIFICATE  
OFLAND SURVEY MONUMENTS SITUATED IN SECTION NO. 14, TOWNSHIP NO. 87 NORTH, RANGE  
NO. 12 WEST OF THE FIFTH PRINCIPAL MERIDIAN, BLACK HAWK COUNTY, IOWA.

PREVIOUSLY RECORDED IN \_\_\_\_\_

(SHOW REASON FOR PREPARING THIS CERTIFICATE, THE EVIDENCE AND DETAILED PROCEDURES USED IN ESTABLISHING THE  
CORNER POSITIONS AND MONUMENTATION FOUND OR PLACED.)

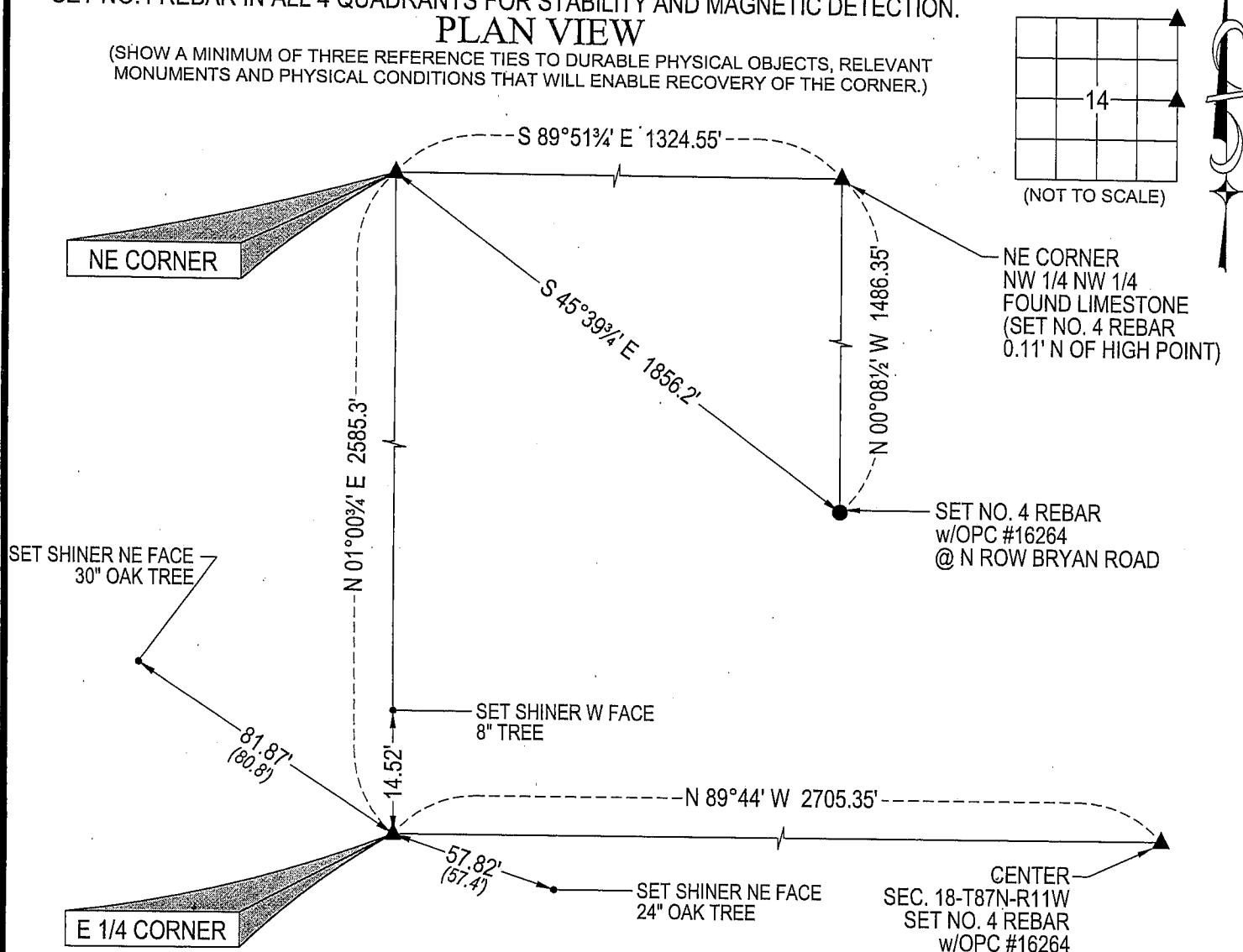
## MONUMENT DESCRIPTION AND REMARKS:

NO USPLSCC ON FILE. SURVEY COMPLETED IN SEC. 13-T87N-R12W.

→ **NE CORNER:** ALL BLACK HAWK COUNTY ENGINEER REFERENCE TIES GONE. W.P.A. CHAINING NOTES DATED 3/6/42 CALL FOR [SET C.M. NE COR. 14/87/12, 18" DEEP IN CULTIVATED FIELD]. FOUND 1' SECTION OF STANDARD CONCRETE MONUMENT BROKEN OFF LYING ON ITS SIDE AT A DEPTH OF 1'. FOUND BASE OF SAID MONUMENT AT A DEPTH OF 2'. SET TOP 1' OF BROKEN OFF MONUMENT ON TOP OF BASE. SET NO. 4 REBAR IN ALL QUADRANTS FOR STABILITY AND MAGNETIC DETECTION. CORNER FALLS IN THE MIDDLE OF AN ALFALFA FIELD.

→ **E 1/4 CORNER:** BLACK HAWK COUNTY ENGINEER REFERENCE TIES CALL FOR [SET C.M.]. FOUND THE BASE OF A STANDARD CONCRETE MONUMENT 1.3' DEEP, TOP WAS BROKEN OFF. FOUND A 1' SECTION OF SAID MONUMENT, DID NOT FIND TOP SECTION. SET THE 1' SECTION ON TOP OF THE BASE, @ A DEPTH OF 0.2'. SET NO. 4 REBAR IN ALL 4 QUADRANTS FOR STABILITY AND MAGNETIC DETECTION.

## PLAN VIEW

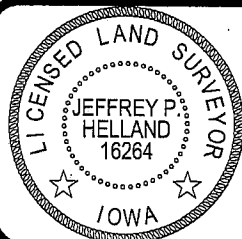
(SHOW A MINIMUM OF THREE REFERENCE TIES TO DURABLE PHYSICAL OBJECTS, RELEVANT  
MONUMENTS AND PHYSICAL CONDITIONS THAT WILL ENABLE RECOVERY OF THE CORNER.)

(BEARINGS ARE BASED UPON GEODETIC NORTH)

HELLAND ENGINEERING & SURVEYING, LTD.  
1107 Technology Parkway  
Cedar Falls, Iowa 50613-6951  
(319)-266-0161SHINER = 8D NAIL & 1 15/16" Ø METAL SHINER  
OPC = PLASTIC CAP (O=ORANGE, R=RED, Y=YELLOW)

(00') RECORDED AS

FILE NAME: 06-287C5.DWG

I hereby certify that this land surveying document was prepared  
and the related survey work was performed by me or under my  
direct personal supervision and that I am a duly licensed Land  
Surveyor under the laws of the State of Iowa.Jeffrey P. Helland 12/11/06  
Jeffrey P. Helland  
License Number 16264  
My license renewal date is December 31, 2007.  
All pages or sheets are covered by this seal except:

## LIST CORNERS TO BE INDEXED

CORNER	SECTION	TOWNSHIP	RANGE
NE CORNER	14	87N	12W
E 1/4 CORNER	14	87N	12W