

Jeffrey P. Helland, 1107 Technology Parkway, Cedar Falls, Iowa 50613-6951, (319)-266-0161

UNITED STATES PUBLIC LAND SURVEY CORNER CERTIFICATE
OFLAND SURVEY MONUMENTS SITUATED IN SECTION NO. 13, TOWNSHIP NO. 87 NORTH, RANGE
NO. 12 WEST OF THE FIFTH PRINCIPAL MERIDIAN, BLACK HAWK COUNTY, IOWA.

PREVIOUSLY RECORDED IN _____

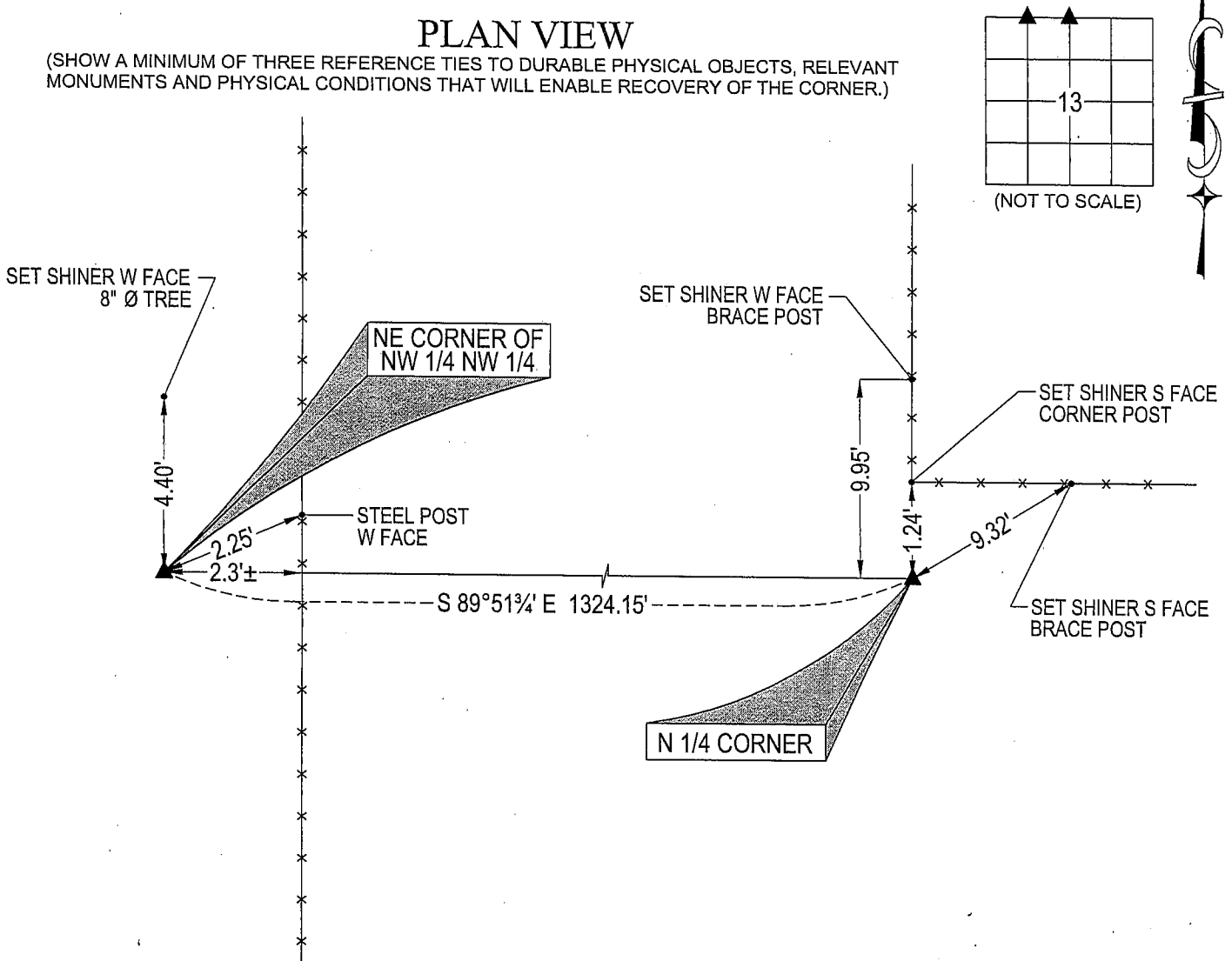
(SHOW REASON FOR PREPARING THIS CERTIFICATE, THE EVIDENCE AND DETAILED PROCEDURES USED IN ESTABLISHING THE
CORNER POSITIONS AND MONUMENTATION FOUND OR PLACED.)

MONUMENT DESCRIPTION AND REMARKS:

NO USPLSCC ON FILE. SURVEY COMPLETED IN SEC. 13-T87N-R12W.

- **N 1/4 CORNER** BLACK HAWK COUNTY ENGINEER REFERENCE TIES CALL FOR [FOUND LINE STONE 16"x11"x4". LOWERED EVIDENCE IN PLACE AND SET CM ON TOP WITH BRASS CAP. SET TOP OF CM 12" DEEP]. FOUND STANDARD CONCRETE MONUMENT w/BRASS CAP, 0.2' DEEP. SAID MONUMENT CORRESPONDS TO W.P.A. CHAINING NOTES DATED 3/3/42 RANDOM LINE DISTANCE WITHIN 0.1'± AND RANDOM LINE OFFSET WITHIN 0.14'±.
- **NE CORNER NW 1/4 NW 1/4:** NO BLACK HAWK COUNTY ENGINEER REFERENCE TIES AVAILABLE. WPA CHAINING NOTES DATED 3/3/42 CALL FOR [POINTED L.S. 15"x6"x4" POINT UP]. FOUND LIMESTONE (0.5' N-S, 0.3' E-W TOP VIEW) UPRIGHT, 1' DEEP. HIGH POINT OF LIMESTONE CORRESPONDS TO W.P.A. CHAINING NOTES DATED 3/3/42 RANDOM LINE DISTANCE WITHIN .2'± AND RANDOM LINE OFFSET WITHIN .03'±. ACCEPTED HIGH POINT OF LIMESTONE AS CORNER. SET NO. 4 REBAR 0.11' N OF HIGH POINT FOR MAGNETIC DETECTION.

PLAN VIEW

(SHOW A MINIMUM OF THREE REFERENCE TIES TO DURABLE PHYSICAL OBJECTS, RELEVANT
MONUMENTS AND PHYSICAL CONDITIONS THAT WILL ENABLE RECOVERY OF THE CORNER.)

(BEARINGS ARE BASED UPON GEODETIC NORTH)

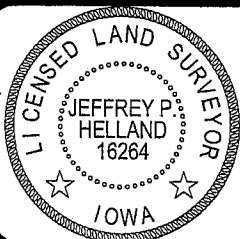


HELLAND ENGINEERING & SURVEYING, LTD.

1107 Technology Parkway
Cedar Falls, Iowa 50613-6951
(319)-266-0161SHINER = 8D NAIL & 1 15/16"Ø METAL SHINER
OPC = PLASTIC CAP (O=ORANGE, R=RED, Y=YELLOW)

(00') RECORDED AS

FILE NAME: 06-287C3.DWG

I hereby certify that this land surveying document was prepared
and the related survey work was performed by me or under my
direct personal supervision and that I am a duly licensed Land
Surveyor under the laws of the State of Iowa.Jeffrey P. Helland 12/11/06
Jeffrey P. Helland
License Number 16264
My license renewal date is December 31, 2007.
All pages or sheets are covered by this seal except:

LIST CORNERS TO BE INDEXED

CORNER	SECTION	TOWNSHIP	RANGE
N 1/4 CORNER	13	87N	12W
NE CORNER NW 1/4 NW 1/4	13	87N	12W