

Jeffrey P. Helland, 1107 Technology Parkway, Cedar Falls, Iowa 50613-6951, (319)-266-0161

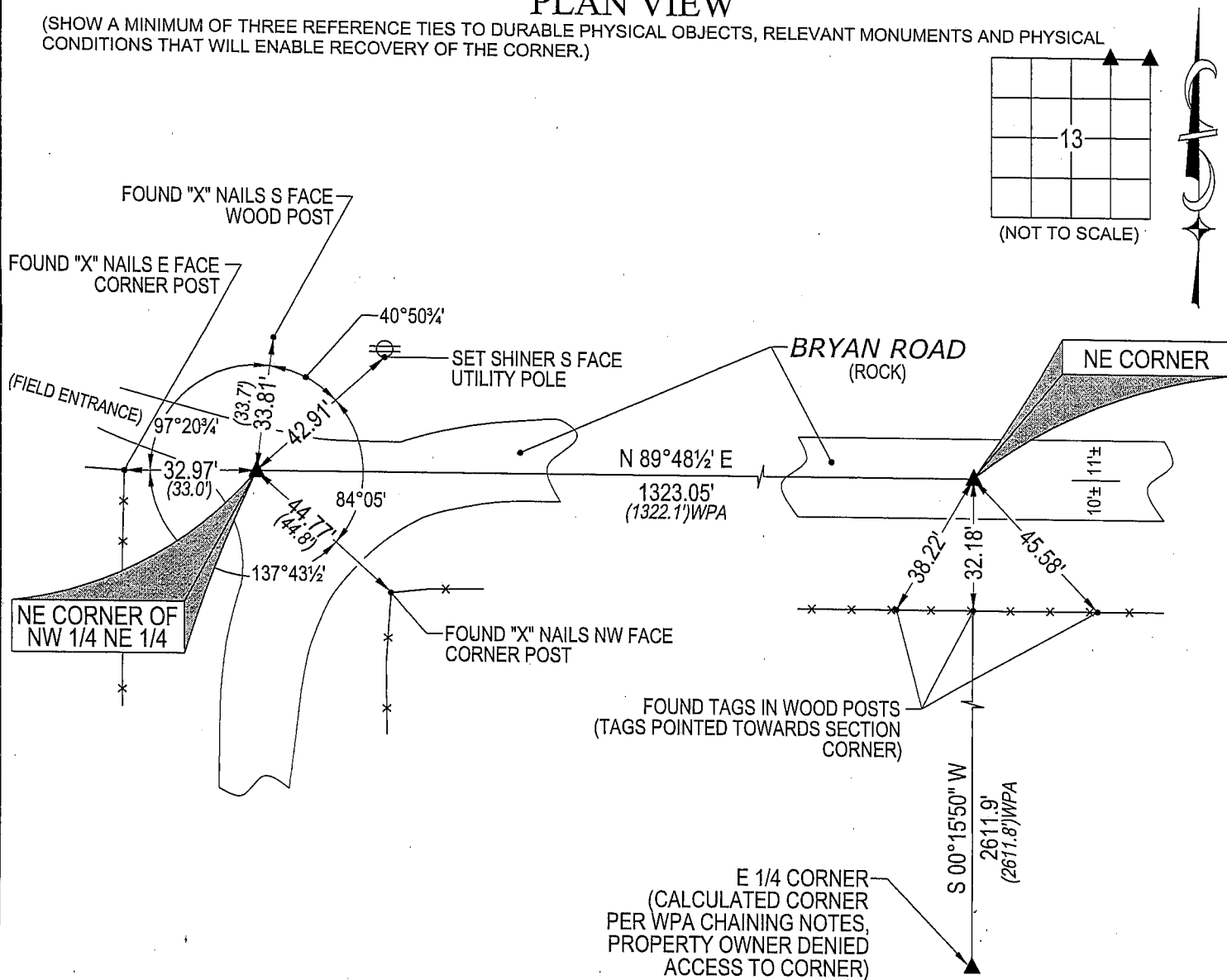
UNITED STATES PUBLIC LAND SURVEY CORNER CERTIFICATE  
OFLAND SURVEY MONUMENTS SITUATED IN SECTION NO. 13, TOWNSHIP NO. 87 NORTH, RANGE  
NO. 12 WEST OF THE FIFTH PRINCIPAL MERIDIAN, BLACK HAWK COUNTY, IOWA.  
PREVIOUSLY RECORDED IN \_\_\_\_\_(SHOW REASON FOR PREPARING THIS CERTIFICATE, THE EVIDENCE AND DETAILED PROCEDURES USED IN ESTABLISHING THE  
CORNER POSITIONS AND MONUMENTATION FOUND OR PLACED.)

## MONUMENT DESCRIPTION AND REMARKS:

NO USPLSCC ON FILE. SURVEY COMPLETED IN SEC. 13-T87N-R12W.

- **NE CORNER:** BLACK HAWK COUNTY ENGINEER REFERENCE TIES CALL FOR [S.C.M.]. PLAT OF SURVEY DATED 10/28/1997 RECORDER IN 327 MISC 793 CALLS FOR [FOUND IRON PIPE]. ALL REFERENCE TIES DATED 5/17/1958 HAVE BEEN OBLITERATED. FOUND 1½" o.d. PINCH PIPE, 0.2' DEEP, CORRESPONDING TO SAID PLAT OF SURVEY.
- **NE CORNER NW 1/4 NE 1/4:** BLACK HAWK COUNTY ENGINEER REFERENCE TIES DO NOT STATE WHAT IS AT CORNER. DUG 1.2±Ø HOLE 2± DEEP AND PROBED IN ALL DIRECTIONS @ INTERSECTIONS OF TIES, FOUND NOTHING. SET NO. 4 REBAR w/OPC #16264 AT THE BEST FIT OF THE INTERSECTIONS OF TIES. POSITION CORRESPONDS TO W.P.A. CHAINING NOTES DATED 3/3/42 RANDOM LINE DISTANCE WITHIN 0.95'± AND RANDOM LINE OFFSET WITHIN 0.5'±.

## PLAN VIEW

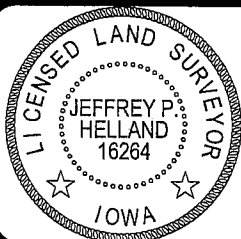
(SHOW A MINIMUM OF THREE REFERENCE TIES TO DURABLE PHYSICAL OBJECTS, RELEVANT MONUMENTS AND PHYSICAL  
CONDITIONS THAT WILL ENABLE RECOVERY OF THE CORNER.)

(BEARINGS ARE BASED UPON GEODETIC NORTH)

HELLAND ENGINEERING & SURVEYING, LTD.  
1107 Technology Parkway  
Cedar Falls, Iowa 50613-6951  
(319)-266-0161SHINER = 8D NAIL & 1 15/16"Ø METAL SHINER  
OPC = PLASTIC CAP (O=ORANGE, R=RED, Y=YELLOW)

(00') RECORDED AS

FILE NAME: 06-287C1.DWG

I hereby certify that this land surveying document was prepared  
and the related survey work was performed by me or under my  
direct personal supervision and that I am a duly licensed Land  
Surveyor under the laws of the State of Iowa.Jeffrey P. Helland 12/1/06  
Jeffrey P. Helland  
License Number 16264  
My license renewal date is December 31, 2007.  
All pages or sheets are covered by this seal except:

## LIST CORNERS TO BE INDEXED

CORNER	SECTION	TOWNSHIP	RANGE
NE CORNER	13	87N	12W
NE CORNER NW 1/4 NE 1/4	13	87N	12W

Rec