

Jeffrey P. Helland, 1107 Technology Parkway, Cedar Falls, Iowa 50613-6951, (319)-266-0161

UNITED STATES PUBLIC LAND SURVEY CORNER CERTIFICATE  
OFLAND SURVEY MONUMENTS SITUATED IN SECTION NO. 13, TOWNSHIP NO. 87 NORTH, RANGE  
NO. 12 WEST OF THE FIFTH PRINCIPAL MERIDIAN, BLACK HAWK COUNTY, IOWA.

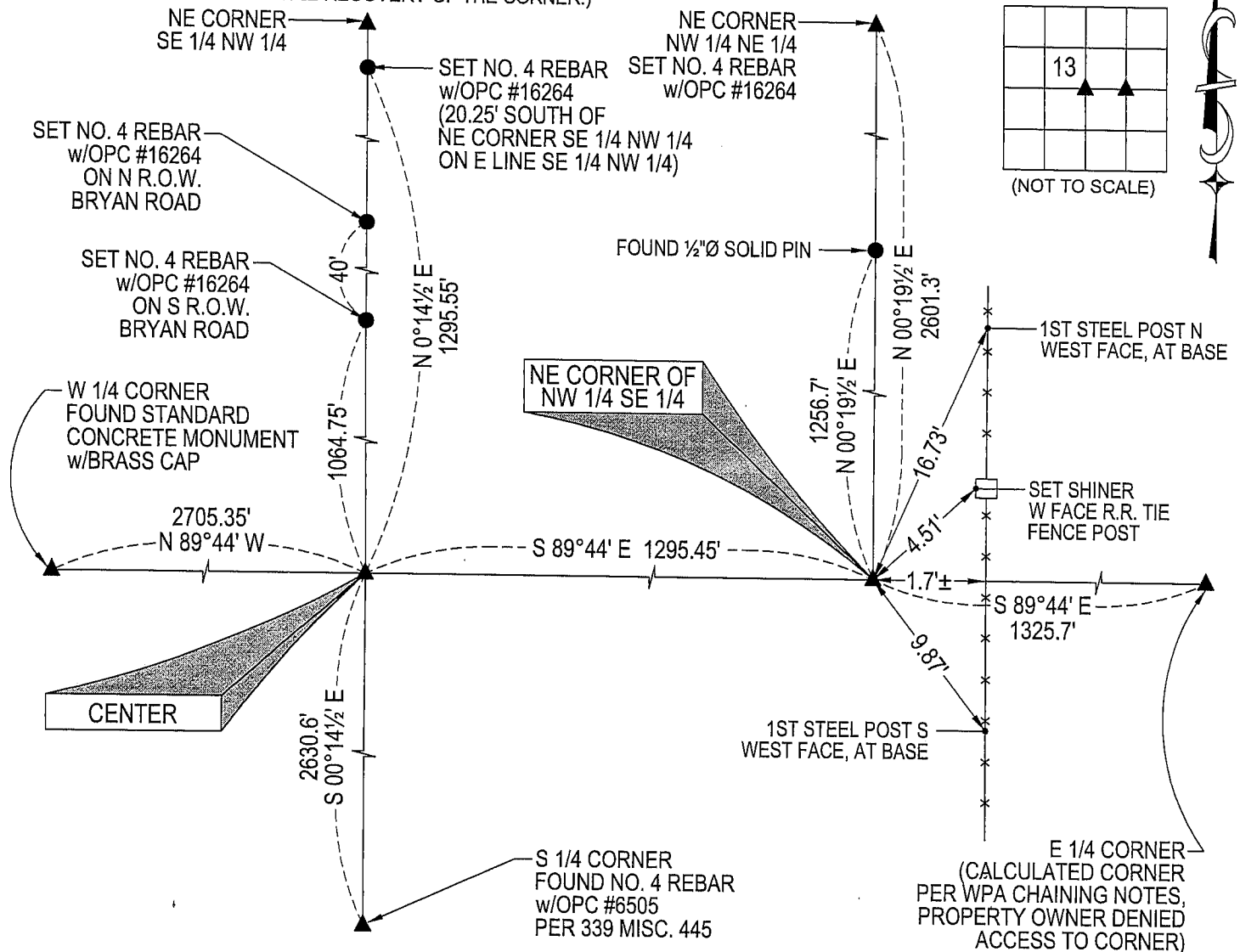
PREVIOUSLY RECORDED IN \_\_\_\_\_

(SHOW REASON FOR PREPARING THIS CERTIFICATE, THE EVIDENCE AND DETAILED PROCEDURES USED IN ESTABLISHING THE  
CORNER POSITIONS AND MONUMENTATION FOUND OR PLACED.)

## MONUMENT DESCRIPTION AND REMARKS:

NO USPLSCC ON FILE. SURVEY COMPLETED IN SEC. 13-T87N-R12W.

- **CENTER:** NO BLACK HAWK COUNTY ENGINEER REFERENCE TIES AVAILABLE. SET NO. 4 REBAR w/OPC #16264 AT INTERSECTION OF 1/4 CORNER CORNERS (BURIED 15" IN CULTIVATED FIELD).
- **NE CORNER NW 1/4 SE 1/4:** NO BLACK HAWK COUNTY ENGINEER REFERENCE TIES AVAILABLE. SET NO. 4 REBAR w/OPC #16264 @ THE INTERSECTION OF A LINE FROM THE W 1/4 CORNER TO THE CALCULATED E 1/4 CORNER AND A LINE FROM THE NE CORNER NW 1/4 NE 1/4 THROUGH A FOUND 1/2"Ø SOLID PIN ON THE EAST LINE OF THE WEST HALF OF THE NE 1/4. **PLAN VIEW**

(SHOW A MINIMUM OF THREE REFERENCE TIES TO DURABLE PHYSICAL OBJECTS, RELEVANT MONUMENTS AND PHYSICAL  
CONDITIONS THAT WILL ENABLE RECOVERY OF THE CORNER.)

(BEARINGS ARE BASED UPON GEODETIC NORTH)

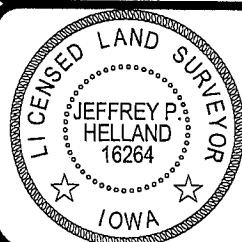


HELLAND ENGINEERING &amp; SURVEYING, LTD.

1107 Technology Parkway  
Cedar Falls, Iowa 50613-6951  
(319)-266-0161SHINER = 8D NAIL & 1 15/16"Ø METAL SHINER  
OPC = PLASTIC CAP (O=ORANGE, R=RED, Y=YELLOW)

(00') RECORDED AS

FILE NAME: 06-287C2.DWG

I hereby certify that this land surveying document was prepared  
and the related survey work was performed by me or under my  
direct personal supervision and that I am a duly licensed Land  
Surveyor under the laws of the State of Iowa.Jeffrey P. Helland 12/11/06  
Jeffrey P. Helland  
License Number 16264  
My license renewal date is December 31, 2007.  
All pages or sheets are covered by this seal except:

## LIST CORNERS TO BE INDEXED

CORNER	SECTION	TOWNSHIP	RANGE
CENTER	13	87N	12W
NE CORNER NW 1/4 SE 1/4	13	87N	12W