



Doc ID: 010122060001 Type: GEN
Recorded: 04/08/2021 at 01:54:39 PM
Fee Amt: \$7.00 Page 1 of 1
Black Hawk County Iowa
SANDIE L. SMITH RECORDER

File 2021-00021215

Reserved for County Recorder's use.

Kyle J. Helland, 6109 Chancellor Drive, Cedar Falls, Iowa 50613-6916, (319)-266-0161

UNITED STATES PUBLIC LAND SURVEY CORNER CERTIFICATE OF

LAND SURVEY MONUMENTS SITUATED IN SECTION NO. 12, TOWNSHIP NO. 87 NORTH, RANGE NO. 12 WEST OF THE FIFTH PRINCIPAL MERIDIAN, BLACK HAWK COUNTY, IOWA.
PREVIOUSLY RECORDED IN N/A

(SHOW REASON FOR PREPARING THIS CERTIFICATE, THE EVIDENCE AND DETAILED PROCEDURES USED IN ESTABLISHING THE CORNER POSITIONS AND MONUMENTATION FOUND OR PLACED.)

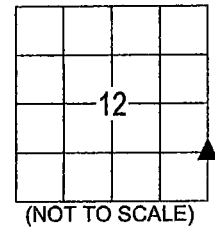
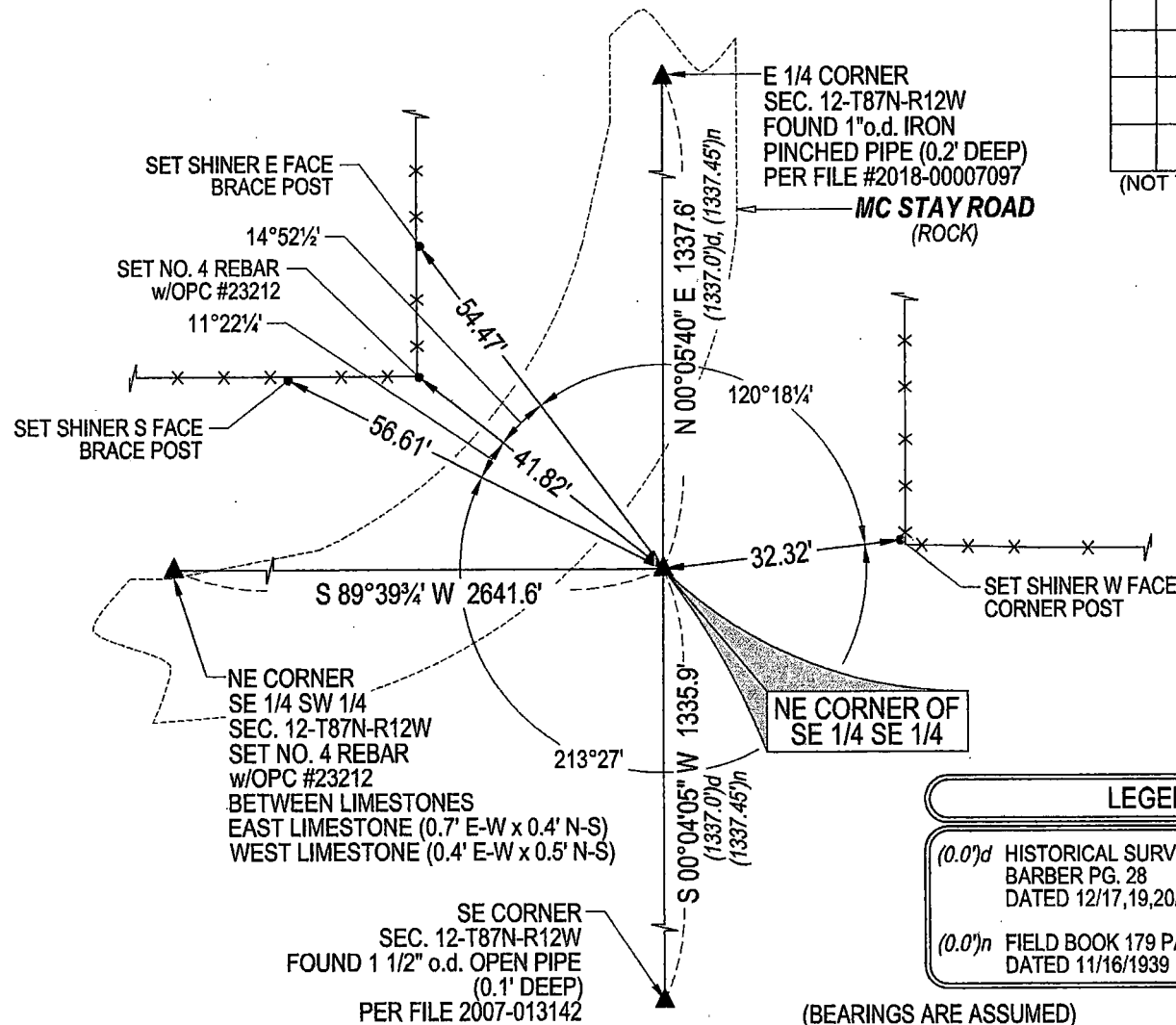
MONUMENT DESCRIPTION AND REMARKS:

NO USPLSCC ON FILE. SURVEY COMPLETED IN THE E 1/2 OF SEC. 12-T87N-R12W.

NE CORNER SE 1/4 SE 1/4: NO BLACK HAWK COUNTY ENGINEER TIES AVAILABLE. HISTORICAL SURVEY BY NATHAN B. BARBER PAGE 28 DATED 12/17, 19-20/1910 CALLS FOR [SET IRON PIN, STONE]. FIELD BOOK 179 PAGE 37 DATED 11/16/1939 CALLS FOR [HUB]. SEARCHED AREA WITH MAGNETIC DETECTOR, EXCAVATED, AND FOUND 1 1/8"Ø SOLID PIN 3.3' DEEP AND LIMESTONE ABUTTING SOUTHEAST OF SAID PIN. SET NO. 4 REBAR w/OPC #23212 DIRECTLY ABOVE SAID 1 1/8"Ø SOLID PIN 0.1' DEEP.

PLAN VIEW

(SHOW A MINIMUM OF THREE REFERENCE TIES TO DURABLE PHYSICAL OBJECTS, RELEVANT MONUMENTS AND PHYSICAL CONDITIONS THAT WILL ENABLE RECOVERY OF THE CORNER.)



LEGEND

- (0.0)d HISTORICAL SURVEY BY NATHAN B. BARBER PG. 28 DATED 12/17,19,20/1910
- (0.0)n FIELD BOOK 179 PAGE 37 DATED 11/16/1939

(BEARINGS ARE ASSUMED)



HELLAND ENGINEERING & SURVEYING, LTD.
6109 Chancellor Drive
Cedar Falls, Iowa 50613-6916
(319)-266-0161

BRASS TAG = 4d. NAIL & 13/16"Ø BRASS TAG DRAWN BY: KDA
SHINER = 1"Ø STEEL SHINER w/MASONRY NAIL
OPC = PLASTIC CAP (O=ORANGE, R=RED, Y=YELLOW)
(00) RECORDED AS FILE NAME: 21-120-1242.DWG



I hereby certify that this land surveying document was prepared and the related survey work was performed by me or under my direct personal supervision and that I am a duly licensed Professional Land Surveyor under the laws of the State of Iowa.
Kyle J. Helland 04/07/2021
Kyle J. Helland
License Number 23212
My license renewal date is December 31, 2021.
All pages or sheets are covered by this seal except:

LIST CORNERS TO BE INDEXED

CORNER	SECTION	TOWNSHIP	RANGE
NE COR. SE 1/4 SE 1/4	12	87N	12W
SE COR. NE 1/4 SE 1/4	12	87N	12W
SW COR. NW FRL 1/4 SW FRL 1/4	7	87N	11W
NW COR. SW FRL 1/4 SW FRL 1/4	7	87N	11W