

INDEX BLACK HAWK COUNTY, IOWA:ss FEE BOOK # 20 03 28511
PROOF FILED FOR RECORD APR 1 2003 AT 4:00 P. M. FEE 1-5.00/
COMPARED Patricia A. Jess BLACK HAWK COUNTY RECORDER

WAYNE CLAASSEN ENGINEERING AND SURVEYING INC

WAYNE CLAASSEN ENGINEERING AND SURVEYING, INC.
P.O. BOX 898 WATERLOO, IOWA 50704-0898

PHONE: (VOICE) 319-235-6294
(FAX) 319-235-0028

UNITED STATES PUBLIC LAND SURVEY CORNER CERTIFICATE

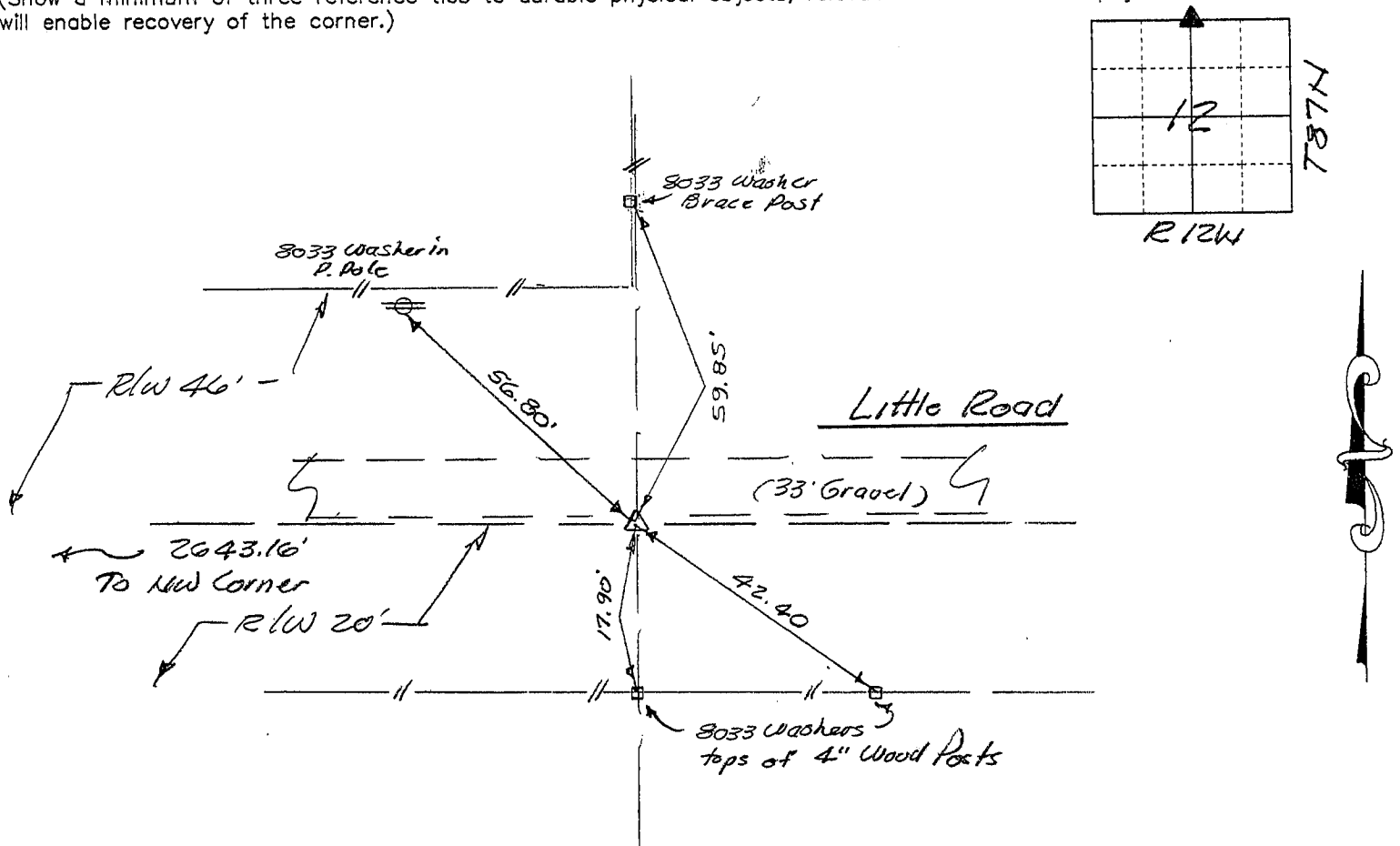
Land Survey Monuments situated in Section 12, Township 87N, Range 12W, of the Fifth Principal Meridian, Black Hawk County, Iowa.
Previously recorded in N/A in County Recorder's Office.
(book, page, document number, etc.)

(Show reason for preparing this certificate, the evidence and detailed procedures used in establishing the corner positions and monumentation found or placed.)

Monument Description and Remarks N 1/4 Corner, dug 3'x3'x3' hole at location as indicated by CUPA notes. CES excavation was also enlarged by Co. Engineers Office to approx 4'x4' with nothing found. Reset corner on alignment of N-S fence to North per CUPA notes & on proportional split of N & S R/W fences of Little Road. Set 1/2" x 24" rebar with yellow cap No. 8033.

PLAN - VIEW

(Show a minimum of three reference ties to durable physical objects, relevant monuments and physical conditions that will enable recovery of the corner.)



540-39

I hereby certify that the survey work was completed and this certificate was prepared by me or under my direct personal supervision and that I am a duly licensed land surveyor under the laws of the state of Iowa.

Signature: F. William King

(Name typed or printed:) F. William King

Date: March 24, 2003 Lic. No. 8033

SEAL

List Corners to be Indexed

Corners	Section	Twp	Range
N 1/4	12	12W	87N

