



Doc ID: 008257810001 Type: GEN
Recorded: 10/23/2017 at 10:02:27 AM
Fee Amt: \$7.00 Page 1 of 1
Black Hawk County Iowa
SANDIE L. SMITH RECORDER

File 2018-00007097

Reserved for County Recorder's use.

Kyle J. Helland, 1107 Technology Parkway, Cedar Falls, Iowa 50613-6951, (319)-266-0161

UNITED STATES PUBLIC LAND SURVEY CORNER CERTIFICATE OF

LAND SURVEY MONUMENTS SITUATED IN SECTION NO. 12, TOWNSHIP NO. 87 NORTH, RANGE
NO. 12 WEST OF THE FIFTH PRINCIPAL MERIDIAN, BLACK HAWK COUNTY, IOWA.
PREVIOUSLY RECORDED IN 307 MISC. 210.

(SHOW REASON FOR PREPARING THIS CERTIFICATE, THE EVIDENCE AND DETAILED PROCEDURES USED IN ESTABLISHING THE
CORNER POSITIONS AND MONUMENTATION FOUND OR PLACED.)

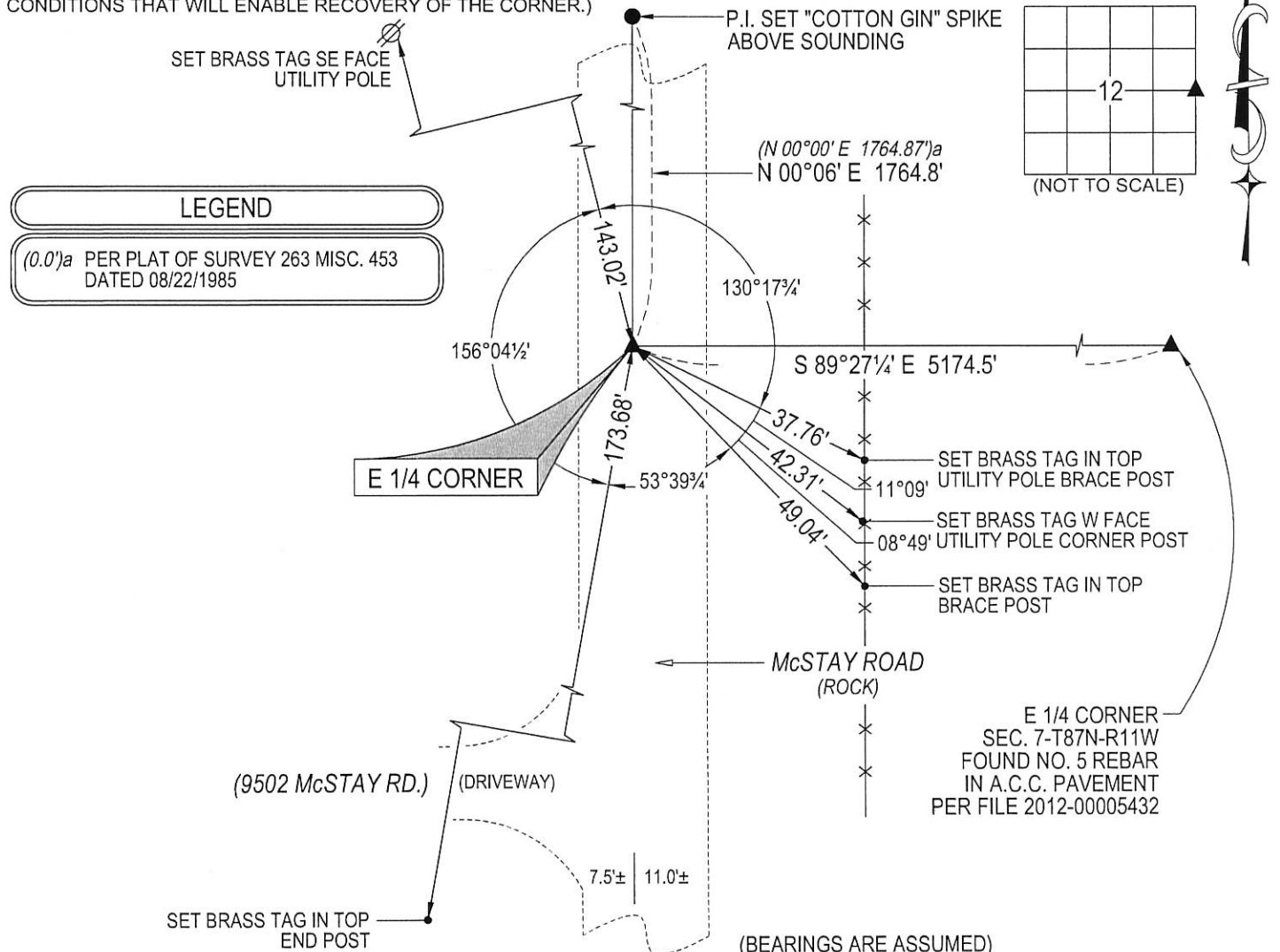
MONUMENT DESCRIPTION AND REMARKS:

ONLY ONE REFERENCE TIE REMAINS & MONUMENTATION HAS CHANGED.
SURVEY COMPLETED IN THE SE 1/4 NW FRL 1/4 OF SEC. 7-T87N-R11W.

→ **E 1/4 CORNER:** NO COUNTY ENGINEER REFERENCE TIES AVAILABLE. PLAT OF SURVEY 263 MISC. 453 DATED 08/22/1985 CALLS FOR [FO. PIN]. USPLSCC 307 MISC. 210 DATED 07/15/1993 CALLS FOR [FOUND 3/4" CLIP PIN, 2" DEEP]. SEARCHED AREA, FOUND 1"o.d. IRON PINCHED PIPE (0.2' DEEP). REMOVED SAID 1"o.d. IRON PINCHED PIPE AND PROBED AT IT'S LOCATION, STRUCK HARD OBJECT (BELIEVED TO BE CONCRETE MONUMENT) AT A DEPTH OF 3.1'. RESET SAID FOUND 1"o.d. IRON PINCHED PIPE AT IT'S PREVIOUS LOCATION AND DEPTH. UTILIZED SAID 1"o.d. IRON PINCHED PIPE AS CORNER.

PLAN VIEW

(SHOW A MINIMUM OF THREE REFERENCE TIES TO DURABLE PHYSICAL OBJECTS, RELEVANT MONUMENTS AND PHYSICAL CONDITIONS THAT WILL ENABLE RECOVERY OF THE CORNER.)



LEGEND

(0.0')a PER PLAT OF SURVEY 263 MISC. 453
DATED 08/22/1985



HELLAND ENGINEERING & SURVEYING, LTD.
1107 Technology Parkway
Cedar Falls, Iowa 50613-6951
(319)-266-0161

SHINER = 8d. NAIL & 1 5/16"Ø METAL SHINER DRAWN BY: JBL
BRASS TAG = 8d. NAIL & 13/16"Ø BRASS TAG
OPC = PLASTIC CAP (O=ORANGE, R=RED, Y=YELLOW)
(00') RECORDED AS FILE NAME: 17-210-26.DWG



I hereby certify that this land surveying document was prepared
and the related survey work was performed by me or under my
direct personal supervision and that I am a duly licensed
Professional Land Surveyor under the laws of the State of Iowa.
Kyle J. Helland 10/20/17
Kyle J. Helland
License Number 23212
My license renewal date is December 31, 2017.
All pages or sheets are covered by this seal except:

LIST CORNERS TO BE INDEXED			
CORNER	SECTION	TOWNSHIP	RANGE
E 1/4 CORNER	12	87N	12W
W 1/4 CORNER	7	87N	11W