

SLSI9-90

UNITED STATES PUBLIC LAND SURVEY CORNER CERTIFICATE OF

Land Survey Monuments situated in Section 12, Township 87N, Range 12W, of the Fifth Principal Meridian, BLACK HAWK County, Iowa.
Previously recorded in _____ in County Recorder's Office.

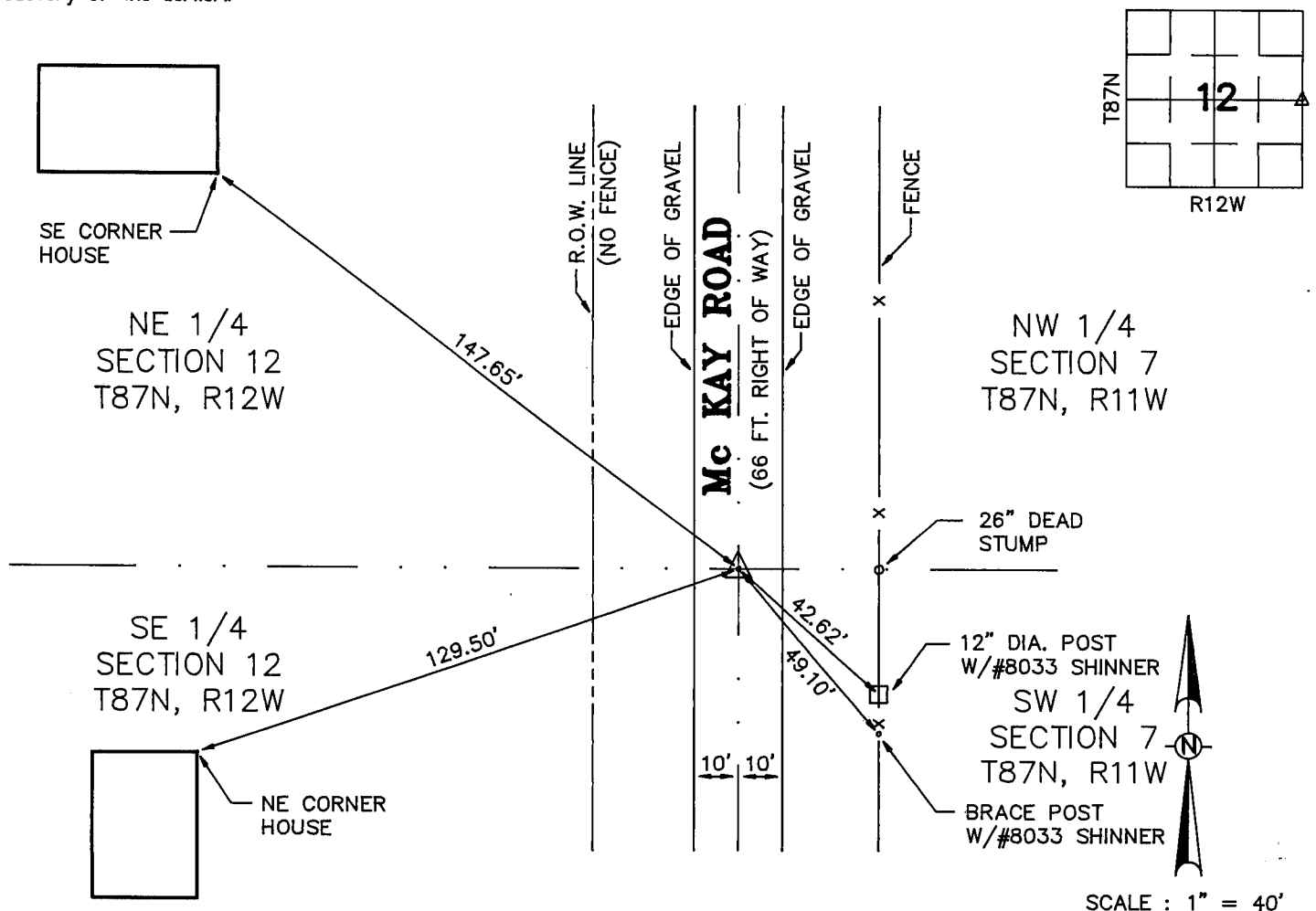
(book, page, document number, etc.)

(Show reason for preparing this certificate, the evidence and detailed procedures used in establishing the corner positions and monumentation found or placed.)

Monument Description and Remarks: FOUND 3/4" CLIP PIN, 2" DEEP

PLAN - VIEW

(Show a minimum of three reference ties to durable physical objects, relevant monuments and physical conditions that will enable recovery of the corner.)



SCALE : 1" = 40'

I hereby certify that the survey work was completed and this certificate was prepared by me or under my direct personal supervision and that I am a duly registered land surveyor under the laws of the state of Iowa.

Signature: Kirk D. Eschliman
Name typed or printed: Kirk D. Eschliman

Date: 07/15/93 Reg. No. 9961 Ia. R.L.S. 9961
My Registration Renewal Date Is December 31, 2000

SEAL



WAYNE CLAASSEN ENGINEERING AND SURVEYING, INC.
WATERLOO, IOWA
FIELD BOOK 354/58 PROJECT NO. 5932.002

Corners	Section	Twp	Range
E 1/4	12	T87N	R12W

MISC. BK 307 p. 210