

Reserved for County Recorder's use.

Doc ID: 010122140001 Type: GEN
Recorded: 04/08/2021 at 02:02:11 PM
Fee Amt: \$7.00 Page 1 of 1
Black Hawk County Iowa
SANDIE L. SMITH RECORDER
File **2021-00021223**

Kyle J. Helland, 6109 Chancellor Drive, Cedar Falls, Iowa 50613-6916, (319)-266-0161

UNITED STATES PUBLIC LAND SURVEY CORNER CERTIFICATE OF

LAND SURVEY MONUMENTS SITUATED IN SECTION NO. 12, TOWNSHIP NO. 87 NORTH, RANGE NO. 12 WEST OF THE FIFTH PRINCIPAL MERIDIAN, BLACK HAWK COUNTY, IOWA.
PREVIOUSLY RECORDED IN N/A

(SHOW REASON FOR PREPARING THIS CERTIFICATE, THE EVIDENCE AND DETAILED PROCEDURES USED IN ESTABLISHING THE CORNER POSITIONS AND MONUMENTATION FOUND OR PLACED.)

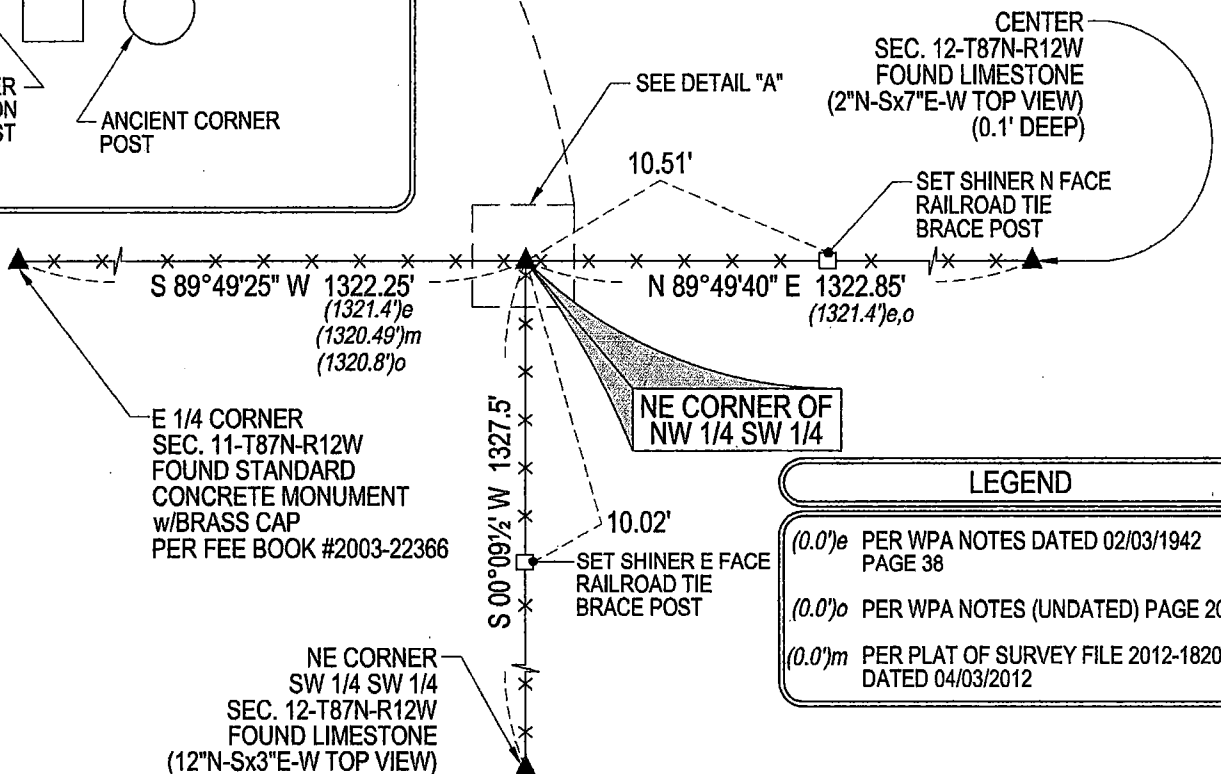
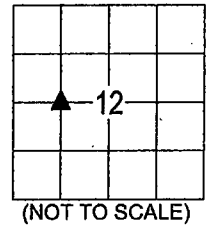
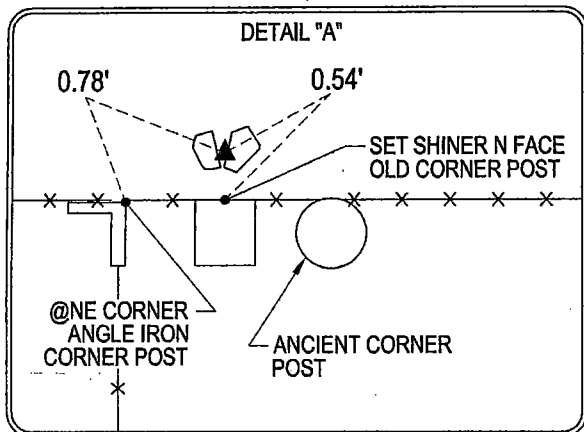
MONUMENT DESCRIPTION AND REMARKS:

NO USPLSCC ON FILE. SURVEY COMPLETED IN SECTIONS 11, 12, 13, AND 14-T87N-R12W.

NE CORNER NW 1/4 SW 1/4: NO BLACK HAWK COUNTY ENGINEER TIES AVAILABLE. WPA NOTES PAGE 20 (UNDATED) CALLS FOR [3/4 STONE CS. FOUND N*****HEAD 40.2' NRL.]. WPA NOTES PAGE 38 DATED 02/03/1942 CALLS FOR [STONE]. FOUND SPLIT GRANITE STONE 0.6' DEEP E 1/2 MEASURING 0.4' E-W x 0.5' N-S, W 1/2 MEASURING 0.25' E-W x 0.5' N-S. SET NO. 4 REBAR w/OPC #23212 BETWEEN STONE HALVES.

PLAN VIEW

(SHOW A MINIMUM OF THREE REFERENCE TIES TO DURABLE PHYSICAL OBJECTS, RELEVANT MONUMENTS AND PHYSICAL CONDITIONS THAT WILL ENABLE RECOVERY OF THE CORNER.)



LEGEND

- (0.0')e PER WPA NOTES DATED 02/03/1942 PAGE 38
- (0.0')o PER WPA NOTES (UNDATED) PAGE 20
- (0.0')m PER PLAT OF SURVEY FILE 2012-18208 DATED 04/03/2012

(BEARINGS ARE ASSUMED)



HELLAND ENGINEERING & SURVEYING, LTD.
6109 Chancellor Drive
Cedar Falls, Iowa 50613-6916
(319)-266-0161

BRASS TAG = 4d. NAIL & 13/16"Ø BRASS TAG DRAWN BY: KDA
SHINER = 1"Ø STEEL SHINER w/MASONRY NAIL
OPC = PLASTIC CAP (O=ORANGE, R=RED, Y=YELLOW)
(00') RECORDED AS FILE NAME: 21-120-1251.DWG



I hereby certify that this land surveying document was prepared and the related survey work was performed by me or under my direct personal supervision and that I am a duly licensed Professional Land Surveyor under the laws of the State of Iowa.

Kyle J. Helland 04/07/2021
Kyle J. Helland
License Number 23212
My license renewal date is December 31, 2021.
All pages or sheets are covered by this seal except:

LIST CORNERS TO BE INDEXED

CORNER	SECTION	TOWNSHIP	RANGE
NE COR. NW 1/4 SW 1/4	12	87N	12W
SE COR. SW 1/4 NW 1/4	12	87N	12W
SW COR. SE 1/4 NW 1/4	12	87N	12W
NW COR. NE 1/4 SW 1/4	12	87N	12W