



Doc ID: 008416830001 Type: GEN
Recorded: 06/06/2018 at 11:24:46 AM
Fee Amt: \$7.00 Page 1 of 1
Black Hawk County Iowa
SANDIE L. SMITH RECORDER

File **2018-00020006**

~~MOHN SURVEYING INC. ROGER R. MOHN 1890 GREAT RIVER ROAD LANSING, IOWA 52151 (563) 538-4067~~

TIES, DWG D. Collier

SLSI 9-90

UNITED STATES PUBLIC LAND SURVEY CORNER CERTIFICATE

OF

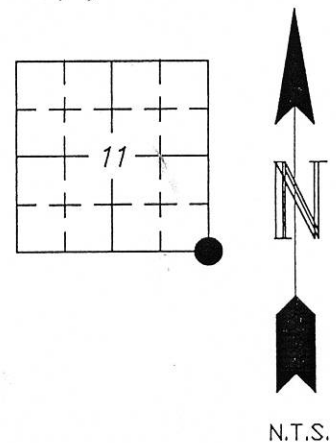
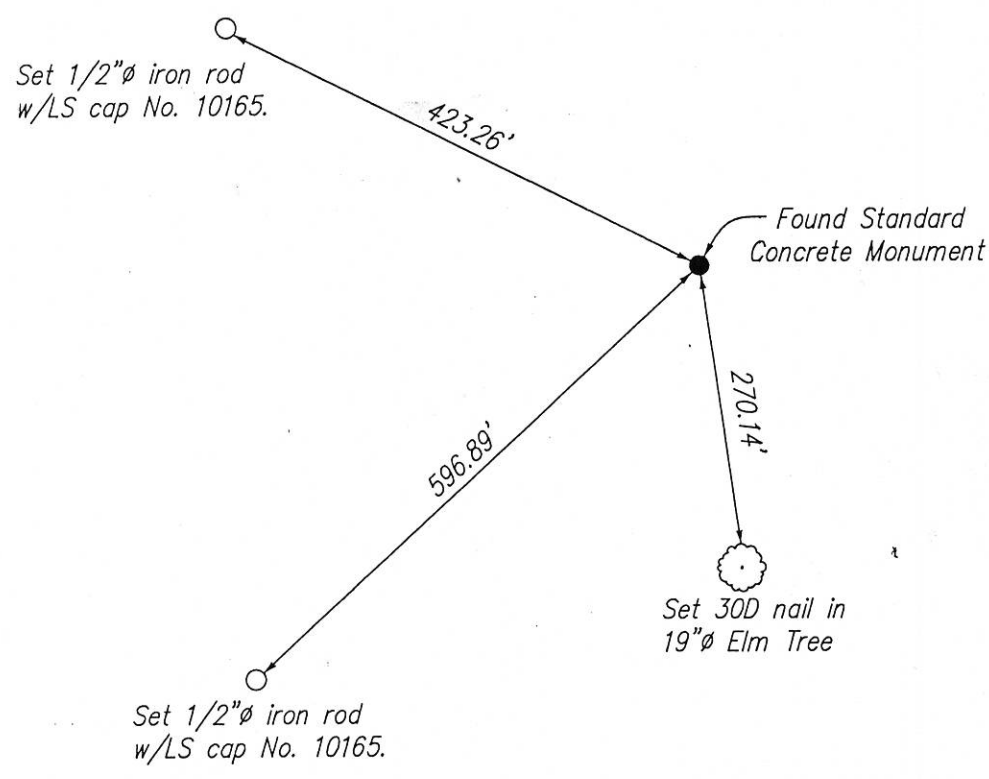
Land Survey Monuments situated in Section 11, Township 87 North, Range 12 West, of the Fifth Principal Meridian, Blackhawk County, Iowa.
Previously recorded in no record on file in County Recorder's Office.
(book, page, document number, etc.)

(Show reason for preparing this certificate, the evidence and detailed procedures used in establishing the corner positions and monumentation found or placed.)

Monument Description and Remarks: Found Standard Concrete Monument at the corner position.

PLAN - VIEW

(Show a minimum of three reference ties to durable physical objects, relevant monuments and physical conditions that will enable recovery of the corner.)



N.T.S.

I hereby certify that this land surveying document was prepared by me or under my direct personal supervision and that I am a duly Registered Land Surveyor under the laws of the state of Iowa.

Roger R. Mohn 6/5, 2018
ROGER R. MOHN, P.E. & L.S. Iowa Registration No. 10165
My registration expires December 31, 2018

List Corners to be Indexed			
Corners	Section	Twp	Range
SE Cor.	11	87N	12W

SEAL

