

SC  
Misc  
INDEX *COF*  
MARGIN  
PROOF  
COMPARE

BLACK HAWK COUNTY IOWA:SS 24266  
FILED FOR RECORD APR 16, 1999 AT  
4:00 P. M. AND RECORDED IN BOOK 334  
OF Misc PAGE 9.  
*Patricia A. Less* RECORDER  
FEE N/C  
BLACK HAWK COUNTY ENGINEERS OFFICE

RECEIVED - BLACK HAWK CO. ASSESSOR

PREPARED BY: BLACK HAWK COUNTY ENGINEERS OFFICE  
316 E. FIFTH STREET, ROOM 211 WATERLOO, IOWA 50703

PH.# (319) 833-3008  
FAX.# (319) 833-3139  
SLSI 9-94  
CERT 12-96

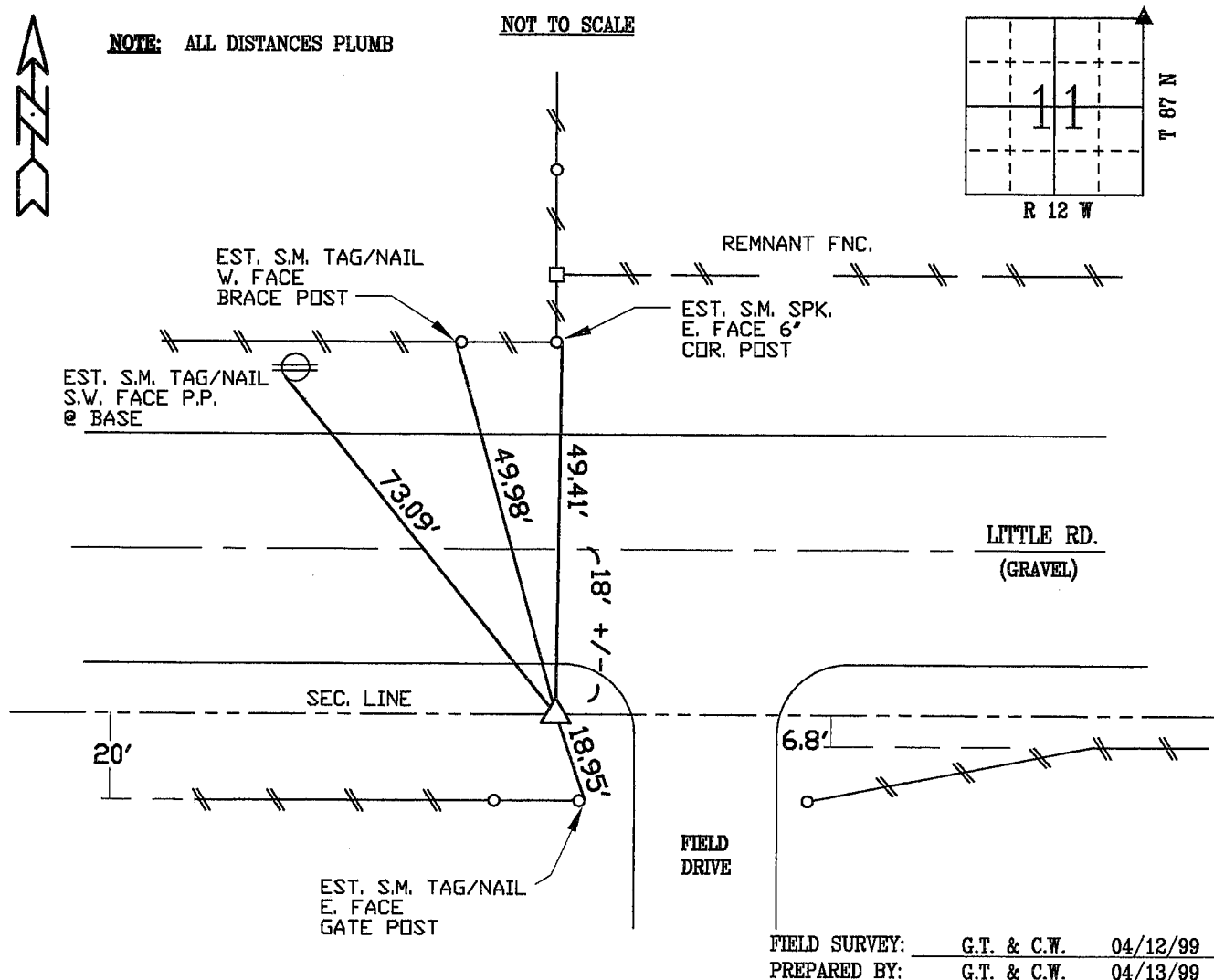
UNITED STATES PUBLIC LAND SURVEY CORNER CERTIFICATE OF  
Land Survey Monuments situated in Section 11, Township 87 N,  
Range 12 W, of the Fifth Principal Meridian, BLACK HAWK County, Iowa.  
Previously recorded in Misc. Book N/A, Page N/A, in County Recorder's Office.

(Show reason for preparing this certificate, the evidence and detailed procedures used in establishing the corner positions and monumentation found or placed.)

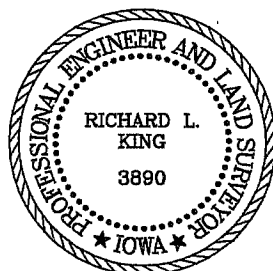
Monument Description and Remarks: FOUND C.M. (WPA TYP.) IN S. FORESLOPE  
LOC. +/- 6' DP. STAMPED 211  
1112, W/BREAK @ 1' ON C.M. EST. 5/8" REBAR  
ALONG EA. FACE AND PLACED CONC. AROUND C.M. TO STABILIZE AND ATTACHED  
TOP. RECOVERED FROM RECORD R.O.W. INFORMATION TO ASSIST W/SURVEY IN  
SECT. 2 BY L.S. #9961.

### PLAN - VIEW

(Show a minimum of three reference ties to durable physical objects, relevant monuments and physical conditions that will enable recovery of the corner.)



### CERTIFICATION



I hereby certify that this land surveying document was prepared and the related survey work was performed by me or under my direct personal supervision and that I am a duly licensed Land Surveyor under the laws of the State of Iowa.

*Richard L. King* 4/15/99  
Richard L. King (date)

License Number 3890

My license renewal date is December 31, 1999

Pages or sheets covered by this seal:

This Land Corner Certificate Only.

### LIST CORNERS TO BE INDEXED

Corner	Section	Township	Range
N.E.	11	87 N	12 W