

Env

Herold - Reicks Surveying, 25 1/2 East Main Street, Suite 204, New Hampton, IA 50659, Ph. 641-394-2725

## UNITED STATES PUBLIC LAND SURVEY CORNER CERTIFICATE

Land Survey Monuments situated in Section **11**, Township **87** North, Range **12** West of the Fifth Principal Meridian, **Black Hawk** County, Iowa. Previously not recorded in the County Recorder's office.

This certificate is being prepared in compliance with Iowa Code Chapter 355.11 because:



- ☒ There are no certificates on file for these corners.
- ☐ There are no longer three valid ties of record.
- ☐ There are changes to reference ties of record.
- ☐ There is change of monumentation of record.
- ☐ To clarify description of record monument (ties).

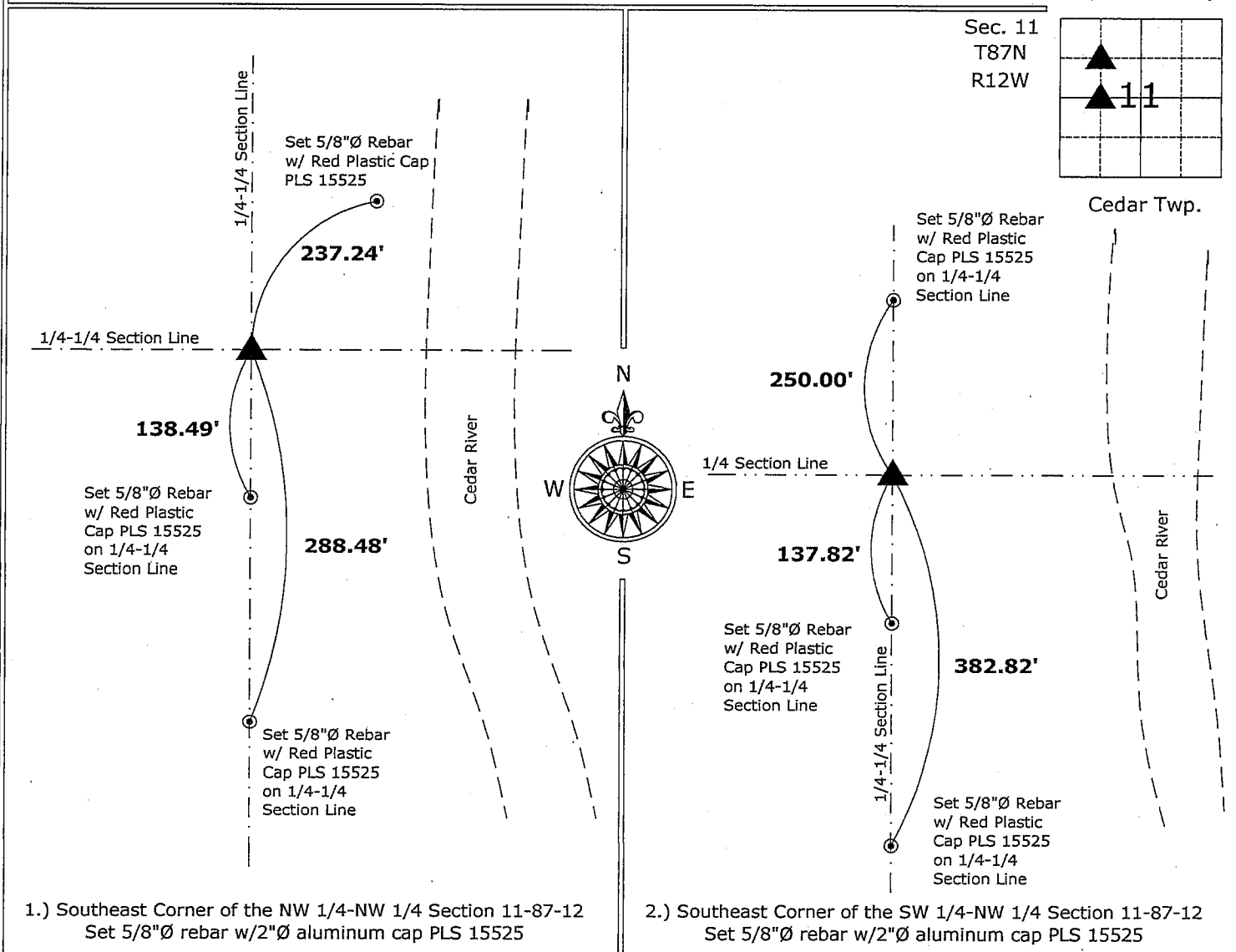
Monument Description and Remarks:

**1.) Southeast Corner of the NW 1/4-NW 1/4:** Set 5/8"Ø rebar w/ 2"Ø aluminum cap PLS 15525 at the intersection of the Quarter-Quarter Section Lines.

**2.) Southeast Corner of the SW 1/4-NW 1/4:** Set 5/8"Ø rebar w/ 2"Ø aluminum cap PLS 15525 equidistant and online between the Center and W 1/4 Corners of the Section.

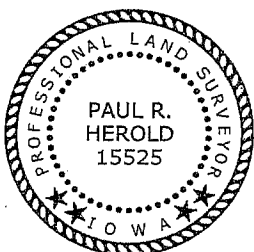
### PLAN - VIEW

(Show a minimum of three reference ties to durable physical objects, relevant monuments and physical conditions that will enable recovery of the corner.)



1.) Southeast Corner of the NW 1/4-NW 1/4 Section 11-87-12  
Set 5/8"Ø rebar w/2"Ø aluminum cap PLS 15525

2.) Southeast Corner of the SW 1/4-NW 1/4 Section 11-87-12  
Set 5/8"Ø rebar w/2"Ø aluminum cap PLS 15525



I hereby certify that this land surveying document was prepared and the related survey work was performed by me or under my direct personal supervision and that I am a duly licensed Land Surveyor under the laws of the State of Iowa.

Paul R. Herold 9-5-09

Paul R. Herold

Date:

License number 15525

My license renewal date is December 31, 2010.

Sheets covered by this seal: Individual sheet only

#### List Corners to be Indexed

Corners	Section	Twp.	Range
SE NW NW	11	87	12
SE SW NW	11	87	12

Project Number:2009-098

FB: Black Hawk County 1, Pgs. 8-9