

Michael J. Shimak

ENV TEKIPPE ENGINEERING PC 128 SOUTH VINE ST WEST UNION IA 52175

TeKIPPE ENGINEERING, P.C., 128 South Vine Street, West Union, Iowa 52175 Phone (563) 422-5131

UNITED STATES PUBLIC LAND SURVEY CORNER CERTIFICATE

OF

Land Survey Monuments situated in Section 10, Township 87 North, Range 12 West of the Fifth Principal Meridian, BLACK HAWK County, Iowa.Previously recorded in none in County Recorder's Office.
(book, page, document number, etc.)

(Show reason for preparing this certificate, the evidence and detailed procedures used in establishing the corner positions and monumentation found or placed.)

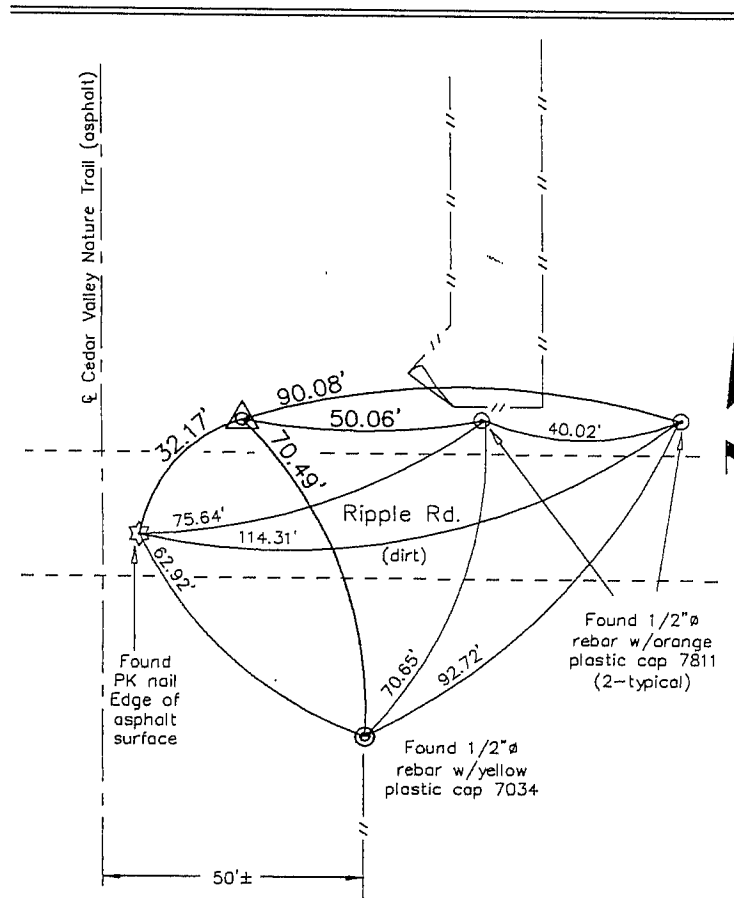
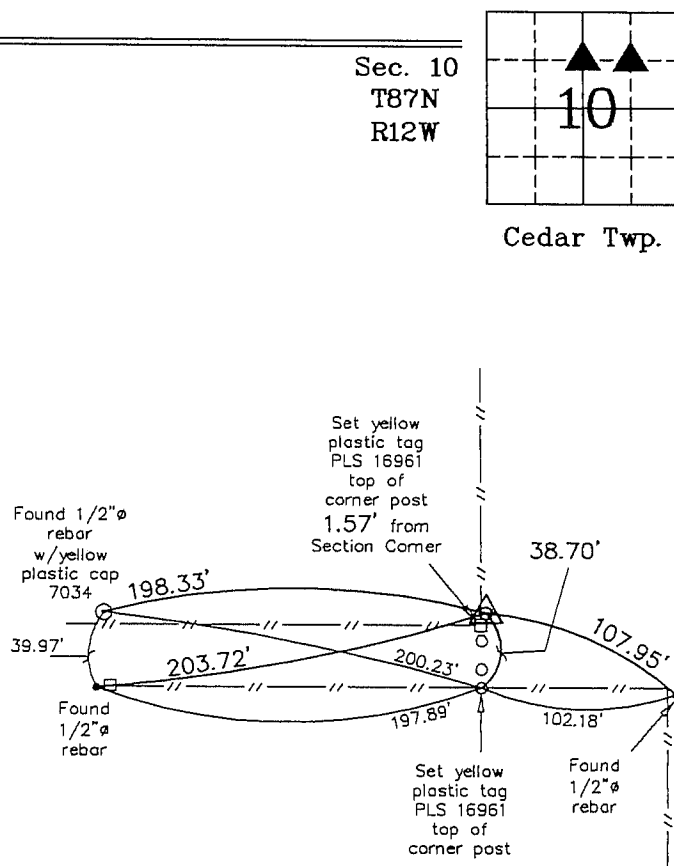
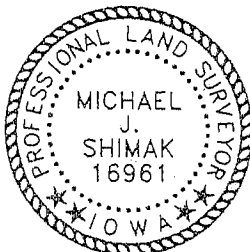
Monument Description and Remarks: SW Corner NW 1/4 - NE 1/4 Section 10 T87N R12W:

Found 1/2"Ø rebar w/orange plastic cap 7811 with information obtained from a Survey and Plat made by F. R. Debe recorded in the Black Hawk County Recorder's Office

January 31, 2003 in Fee Book 2003-21957. SE Corner NW 1/4 - NE 1/4 Section 10T87N R12W: Found 1/2"Ø rebar w/yellow plastic cap 7034 with information obtained from a Survey and Plat made by Gary G. Brown recorded in the Black Hawk County Recorder's Office November 1991 in Book 298, Page 853.

PLAN - VIEW

(Show a minimum of three reference ties to durable physical objects, relevant monuments and physical conditions that will enable recovery of the corner.)

SW Corner NW 1/4 - NE 1/4 Section 10 T87N R12W
Found 1/2"Ø rebar w/orange plastic cap 7811SE Corner NW 1/4 - NE 1/4 Section 10 T87N R12W
Found 1/2"Ø rebar w/yellow plastic cap 7034

I hereby certify that this land surveying document was prepared and the related survey work was performed by me or under my direct personal supervision and that I am a duly licensed Land Surveyor under the laws of the State of Iowa.

Michael J. Shimak January 19, 2005
Michael J. Shimak Date

License number 16961

My license renewal date is December 31, 2005.

Sheets covered by this seal: Individual

List Corners to be Indexed

| Corners | Section | Twp. | Range |
|----------|---------|------|-------|
| SW-NW-NE | 10 | 87N | 12W |
| SE-NW-NE | 10 | 87N | 12W |

Project Number 04118.LS
FB. NRCS #3 PG. 12-22

X:\Section Corners\Sec. 10\10-87-12hi.dwg