

PROOF FILED FOR RECORD JAN 19, 2005, AT 10:00 A.M. FEE 1-5.00-1.00/

COMPARED

Patricia J. Debe

BLACK HAWK COUNTY RECORDER

ENV TEKIPPE ENGINEERING PC 128 SOUTH VINE ST WEST UNION IA 52175

TeKIPPE ENGINEERING, P.C., 128 South Vine Street, West Union, Iowa 52175 Phone (563) 422-5131

UNITED STATES PUBLIC LAND SURVEY CORNER CERTIFICATE

OF

Land Survey Monuments situated in Section 10, Township 87 North, Range 12 West of the Fifth Principal Meridian, BLACK HAWK County, Iowa.Previously recorded in none in County Recorder's Office.
(book, page, document number, etc.)

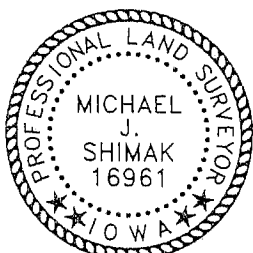
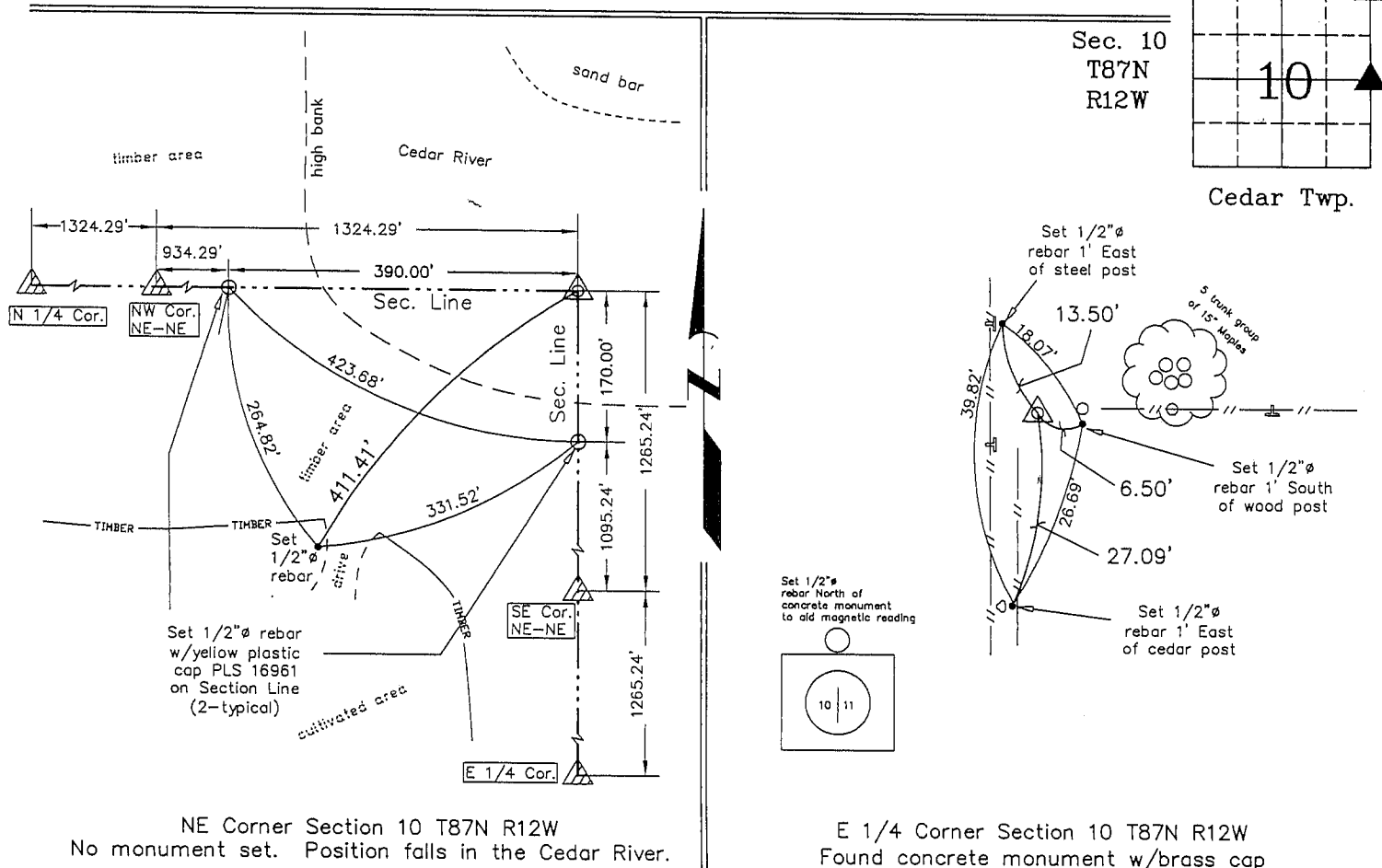
(Show reason for preparing this certificate, the evidence and detailed procedures used in establishing the corner positions and monumentation found or placed.)

Monument Description and Remarks: NE Corner Section 10 T87N R12W: No monument was set as the position falls in the Cedar River. The position was calculated by doubling a line from the N 1/4 Corner to and across the NW Corner NE 1/4-NE 1/4 as indicated in a Plat and Survey made by F. R. Debe recorded in the Black Hawk County Recorder's Office January 31, 2003 in Land Deed Book 574, Page 654.

E 1/4 Corner Section 10 T87N R12W: Found concrete monument w/brass cap with information obtained from the Black Hawk County Engineer's Office in Field Book Random Chaining T87N, R12W and Field Book Section Corner Ties T87N, R12W.

PLAN - VIEW

(Show a minimum of three reference ties to durable physical objects, relevant monuments and physical conditions that will enable recovery of the corner.)



I hereby certify that this land surveying document was prepared and the related survey work was performed by me or under my direct personal supervision and that I am a duly licensed Land Surveyor under the laws of the State of Iowa.

Michael J. Shimak January 18, 2005
Michael J. Shimak Date

License number 16961

My license renewal date is December 31, 2005.

Sheets covered by this seal: Individual

List Corners to be Indexed

Corners	Section	Twp.	Range
NE	10	87N	12W
E 1/4	10	87N	12W

Project Number 04118.LS
FB. NRCS #3 PG. 12-22

X:\Section Corners\Sec. 10\10-87-12ec.dwg