

SC  
MISC  
INDEX MKG  
MARGIN  
PROOF  
COMPARE

BLACK HAWK COUNTY IOWA:SS  
FILED FOR RECORD Dec 8, 1999 AT 012579  
1:00P M., AND RECORDED IN BOOK 336  
OF MISC PAGE 577  
RECORDER  
FEE 1-5.00/.  
PAUL HELLAND  
1107 TECHNOLOGY PKWY CEDAR FALLS IA 50613

Paul H. Helland, 1107 Technology Parkway, Cedar Falls, Iowa 50613-6951, (319)-266-0161

## UNITED STATES PUBLIC LAND SURVEY CORNER CERTIFICATE OF

LAND SURVEY MONUMENTS SITUATED IN SECTION NO. 10, TOWNSHIP NO. 87 NORTH, RANGE  
NO. 12 WEST OF THE FIFTH PRINCIPAL MERIDIAN, BLACK HAWK COUNTY, IOWA.  
PREVIOUSLY RECORDED IN BOOK 310, PAGE 429.

(SHOW REASON FOR PREPARING THIS CERTIFICATE, THE EVIDENCE AND DETAILED PROCEDURES USED IN ESTABLISHING THE  
CORNER POSITIONS AND MONUMENTATION FOUND OR PLACED.)

### MONUMENT DESCRIPTION AND REMARKS:

SURVEY DONE IN SW 1/4 NW 1/4 OF SEC. 10-T87N-R12W.

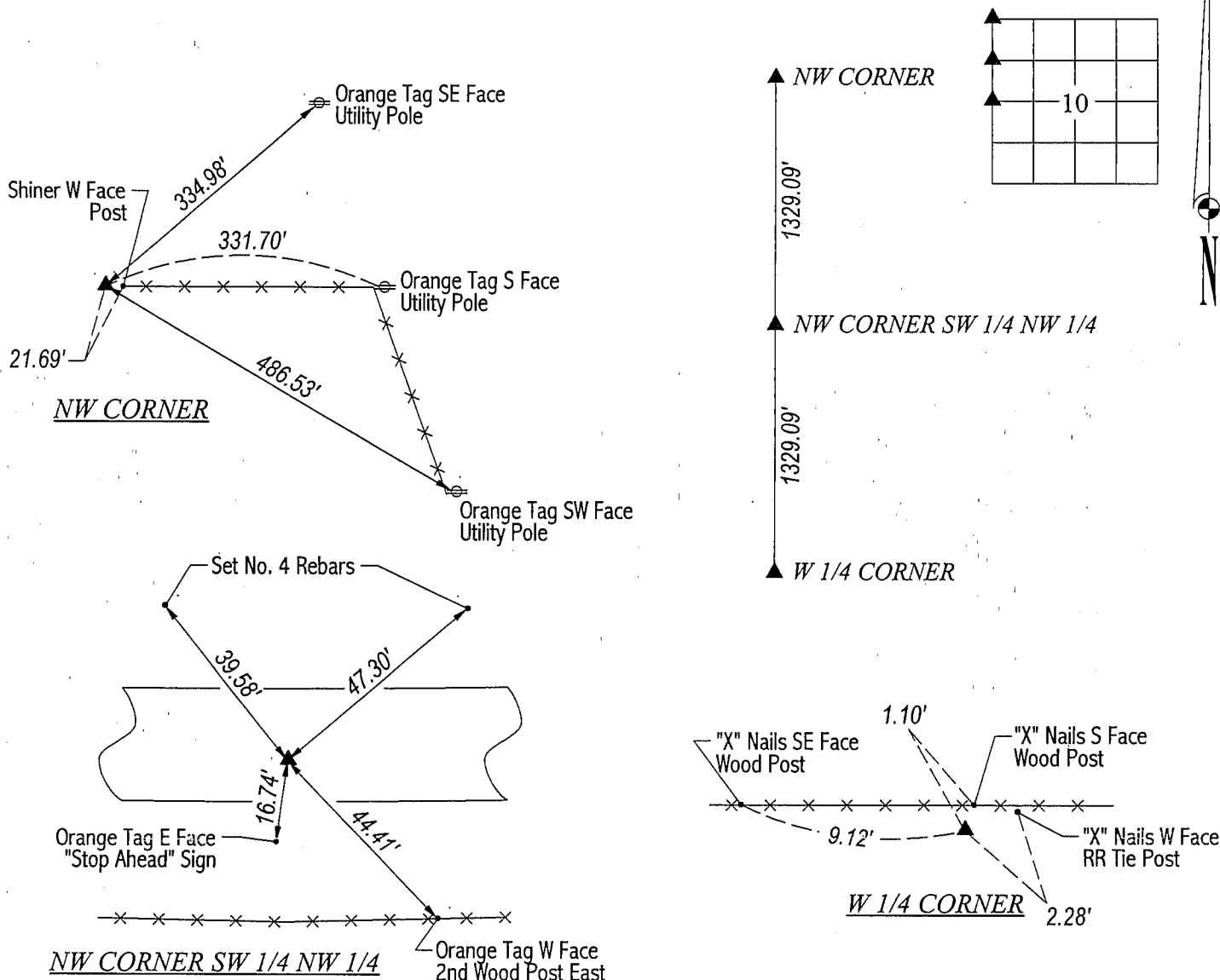
NW CORNER: Found Concrete Monument w/brass cap. Top 1.2' Broken off, Set Top on Base & Placed No. 4 Rebars  
on all 4 sides for support & wrapped with wire, top of monument is 0.8' above grade. See Misc. Bk 310 Pg 429.

W 1/4 CORNER: County ties call for Concrete Monument w/brass cap, Concrete Monument w/brass cap was found in 6/1979,  
Plat of Survey recorded in Misc. Bk 319 Pg 985 calls for 1.5" iron pipe w/plug. Found 2" Pipe w/plug and dug for concrete  
monument. No concrete monument found, used 2" Pipe (0.2' deep).

NW CORNER SW 1/4 NW 1/4: Set No. 4 Rebar w/orange cap #6505 @ split of line between NW Corner & W 1/4 Corner.

### PLAN VIEW

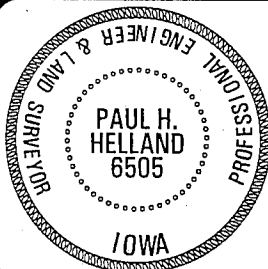
(SHOW A MINIMUM OF THREE REFERENCE TIES TO DURABLE PHYSICAL OBJECTS, RELEVANT MONUMENTS AND PHYSICAL  
CONDITIONS THAT WILL ENABLE RECOVERY OF THE CORNER.)



**HES**

HELLAND ENGINEERING & SURVEYING, LTD.  
1107 Technology Parkway  
Cedar Falls, Iowa 50613-6951  
(319)-266-0161

FILE NAME: 99-335CC.DRG



I hereby certify that this land surveying document was prepared  
and the related survey work was performed by me or under my  
direct personal supervision and that I am a duly licensed Land  
Surveyor under the laws of the State of Iowa.

*Paul H. Helland* 12/7/99  
Paul H. Helland  
License Number 6505  
My license renewal date is December 31, 1999.  
All pages or sheets are covered by this seal except:

LIST CORNERS TO BE INDEXED			
CORNER	SECTION	TOWNSHIP	RANGE
NW CORNER	10	87N	12W
W 1/4 CORNER	10	87N	12W
NW CORNER SW 1/4 NW 1/4	10	87N	12W

12.00

336 PAGE 577