

PROOF FILED FOR RECORD JAN 19 2005 AT 10:00 A.M. FEE 1-5.00-1.00/

COMPARED

*Patricia L. Shaw*

BLACK HAWK COUNTY RECORDER

ENV TEKIPPE ENGINEERING PC 128 SOUTH VINE ST WEST UNION IA 52175

TeKIPPE ENGINEERING, P.C., 128 South Vine Street, West Union, Iowa 52175 Phone (563) 422-5131

## UNITED STATES PUBLIC LAND SURVEY CORNER CERTIFICATE

OF

Land Survey Monuments situated in Section 10, Township 87 North, Range 12 West of the Fifth Principal Meridian, BLACK HAWK County, Iowa.  
Previously recorded in (1) none (2) Bk. 336 Pg. 577 in County Recorder's Office.  
(book, page, document number, etc.)

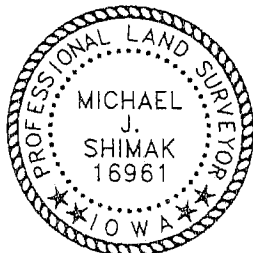
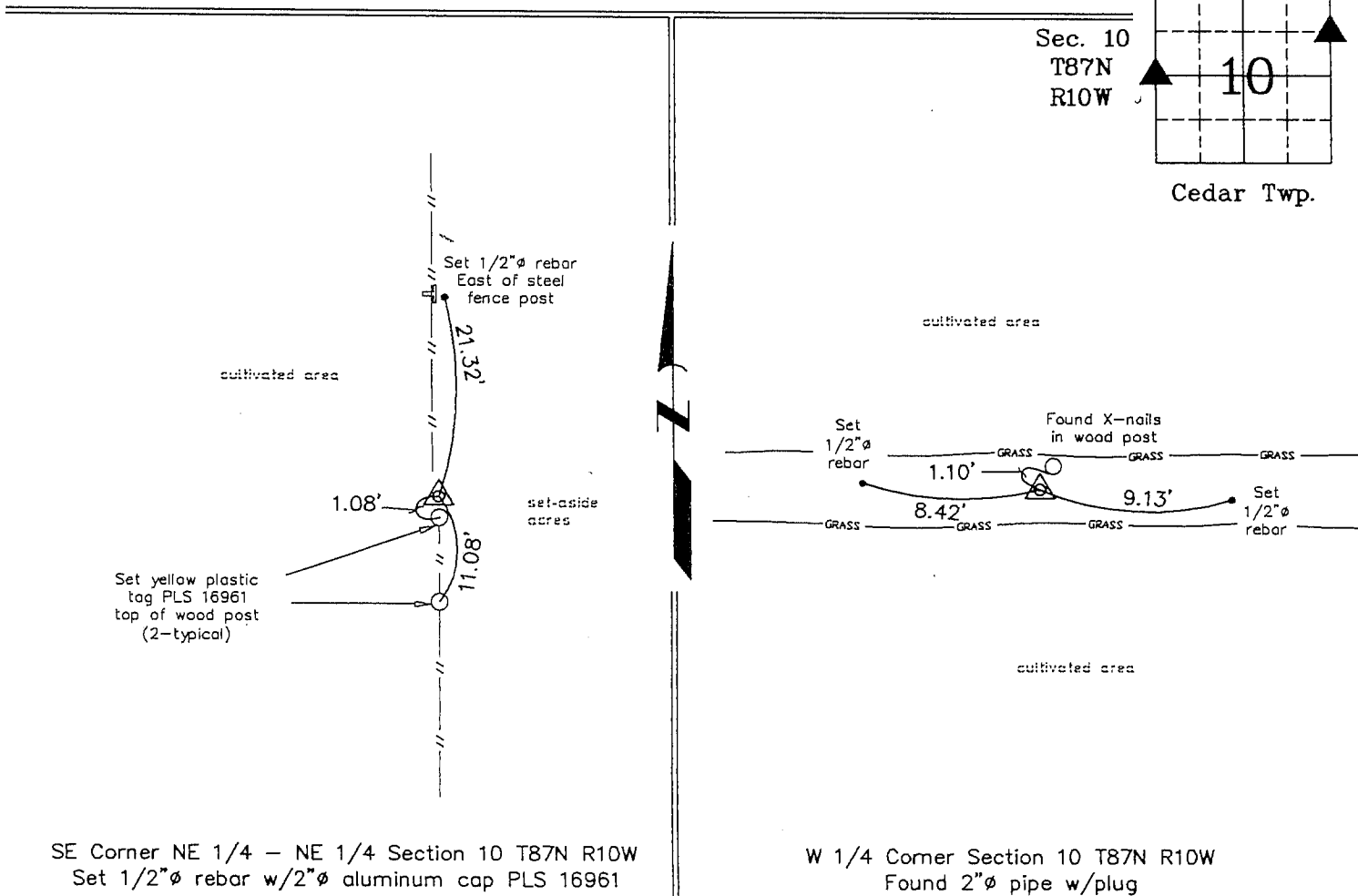
(Show reason for preparing this certificate, the evidence and detailed procedures used in establishing the corner positions and monumentation found or placed.)

Monument Description and Remarks: (1) SE Corner NE 1/4 - NE 1/4 Section 10 T87N R12W: Set 1/2"Ø rebar w/2"Ø aluminum cap PLS 16961 equidistant and on line between the E 1/4 Corner and the NE Corner.

(2) W 1/4 Corner Section 10 T87N R12W: Found 2"Ø pipe w/plug with information obtained from the previous Section Corner Certificate recorded in the Black Hawk County Recorder's Office in Book 336, Page 577. Two reference ties were missing; set two reference ties.

## PLAN - VIEW

(Show a minimum of three reference ties to durable physical objects, relevant monuments and physical conditions that will enable recovery of the corner.)



I hereby certify that this land surveying document was prepared and the related survey work was performed by me or under my direct personal supervision and that I am a duly licensed Land Surveyor under the laws of the State of Iowa.

*Michael J. Shimak* January 18, 2005  
Michael J. Shimak Date

License number 16961

My license renewal date is December 31, 2005.

Sheets covered by this seal: Individual

## List Corners to be Indexed

Corners	Section	Twp.	Range
SE-NE-NE	10	87N	10W-12W
W 1/4	10	87N	10W-12W

Project Number 04118.IS  
FB. NRCS #3 PG. 12-22

X:\Section Corners\Sec. 10\10-87-12jk.dwg