

SC
Misc
INDEX
MARGIN
PROOF
COMPARE

BLACK HAWK COUNTY IOWA:SS 24267
FILED FOR RECORD APR 16, 1999 AT
4:00 P. M. AND RECORDED IN BOOK 334
OF Misc PAGE 101
RECORDER
FEE N/C
BLACK HAWK COUNTY ENGINEERS OFFICE

RECEIVED - BLACK HAWK CO. ASSESSOR

PREPARED BY: BLACK HAWK COUNTY ENGINEERS OFFICE PH.# (319) 833-3008 SLSI 9-94
316 E. FIFTH STREET, ROOM 211 WATERLOO, IOWA 50703 FAX.# (319) 833-3139 CERT 12-96

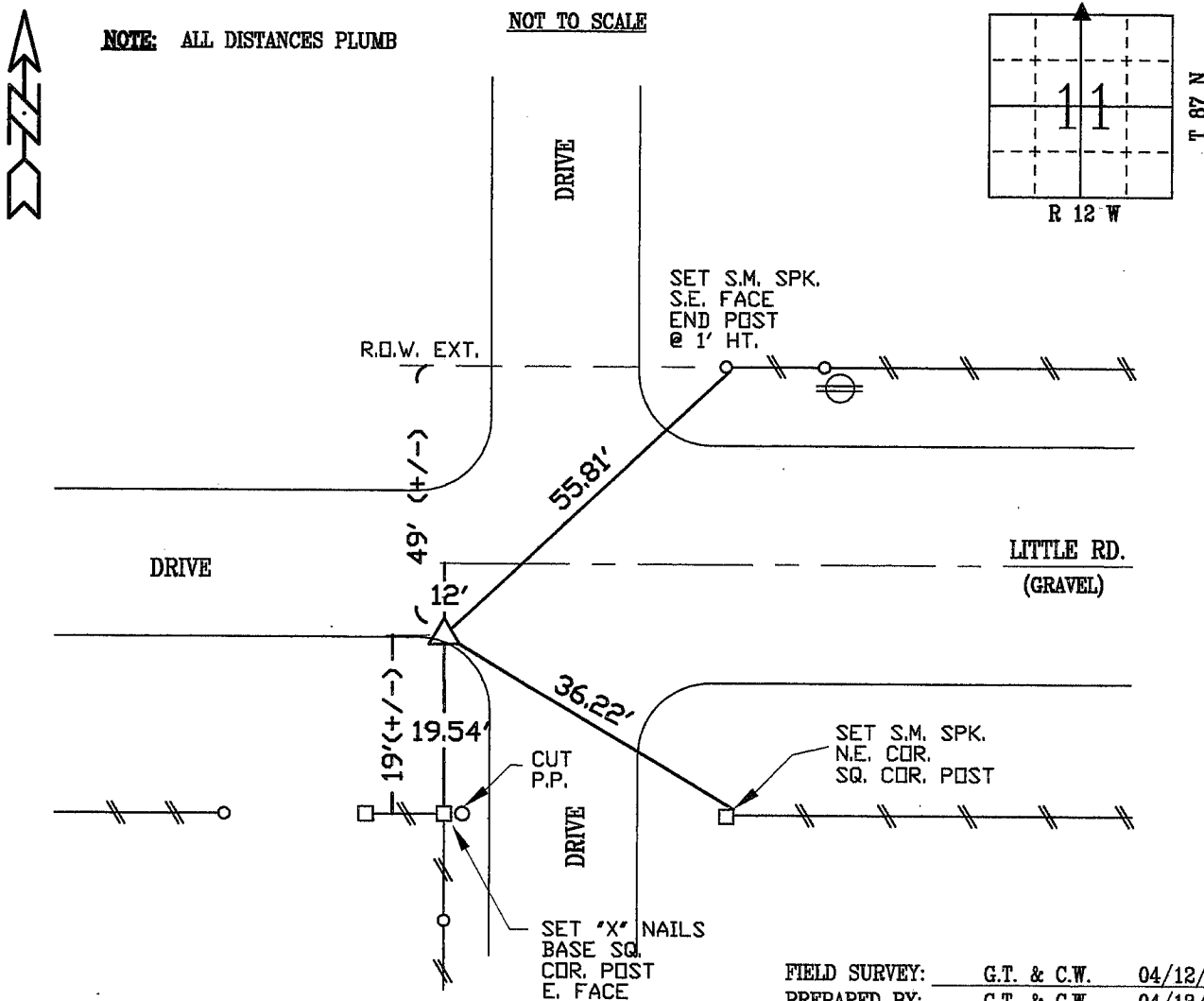
UNITED STATES PUBLIC LAND SURVEY CORNER CERTIFICATE OF
Land Survey Monuments situated in Section 11, Township 87 N,
Range 12 W, of the Fifth Principal Meridian, BLACK HAWK County, Iowa.
Previously recorded in Misc. Book N/A, Page N/A, in County Recorder's Office.

(Show reason for preparing this certificate, the evidence and detailed procedures used in establishing the corner positions and monumentation found or placed.)

Monument Description and Remarks: FOUND 7/8" SQ. STEEL PIN LOCATED
10' DP. FROM RECORD R.O.W. AND RECORD COUNTY TIES. PULLED 18.9' OFF N.
FACE OF SQ. COR. POST (LOC. S. OF COR.) VS. RECORD 18.7', AND MEASURED
35.7' OFF BASE OF SQ. BRACE POST (LOC. S.E.) VS. RECORD 34.9' (IF SAME?).
RECOVERY REQUESTED FOR ASSISTANCE W/SURVEY IN SECT. 2 BY L.S. #9961.

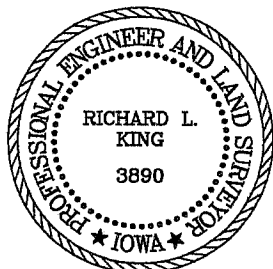
PLAN - VIEW

(Show a minimum of three reference ties to durable physical objects, relevant monuments and physical conditions that will enable recovery of the corner.)



FIELD SURVEY: G.T. & C.W. 04/12/99
PREPARED BY: G.T. & C.W. 04/13/99

CERTIFICATION



I hereby certify that this land surveying document was prepared and the related survey work was performed by me or under my direct personal supervision and that I am a duly licensed Land Surveyor under the laws of the State of Iowa.

Richard L. King 4/13/99 (date)

License Number 3890

My license renewal date is December 31, 1999

Pages or sheets covered by this seal:

This Land Corner Certificate Only.

LIST CORNERS TO BE INDEXED

| Corner | Section | Township | Range |
|--------|---------|----------|-------|
| N. 1/4 | 11 | 87 N | 12 W |