

ENV TEKIPPE ENGINEERING PC 128 SOUTH VINE ST WEST UNION IA 52175

TeKIPPE ENGINEERING, P.C., 128 South Vine Street, West Union, Iowa 52175 Phone (563) 422-5131

UNITED STATES PUBLIC LAND SURVEY CORNER CERTIFICATE

OF

Land Survey Monuments situated in Section 10, Township 87 North, Range 12 West of the Fifth Principal Meridian, BLACK HAWK County, Iowa.
Previously recorded in none in County Recorder's Office.
(book, page, document number, etc.)

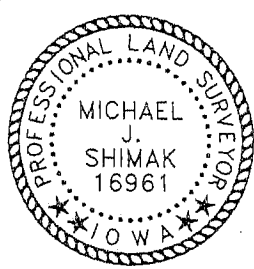
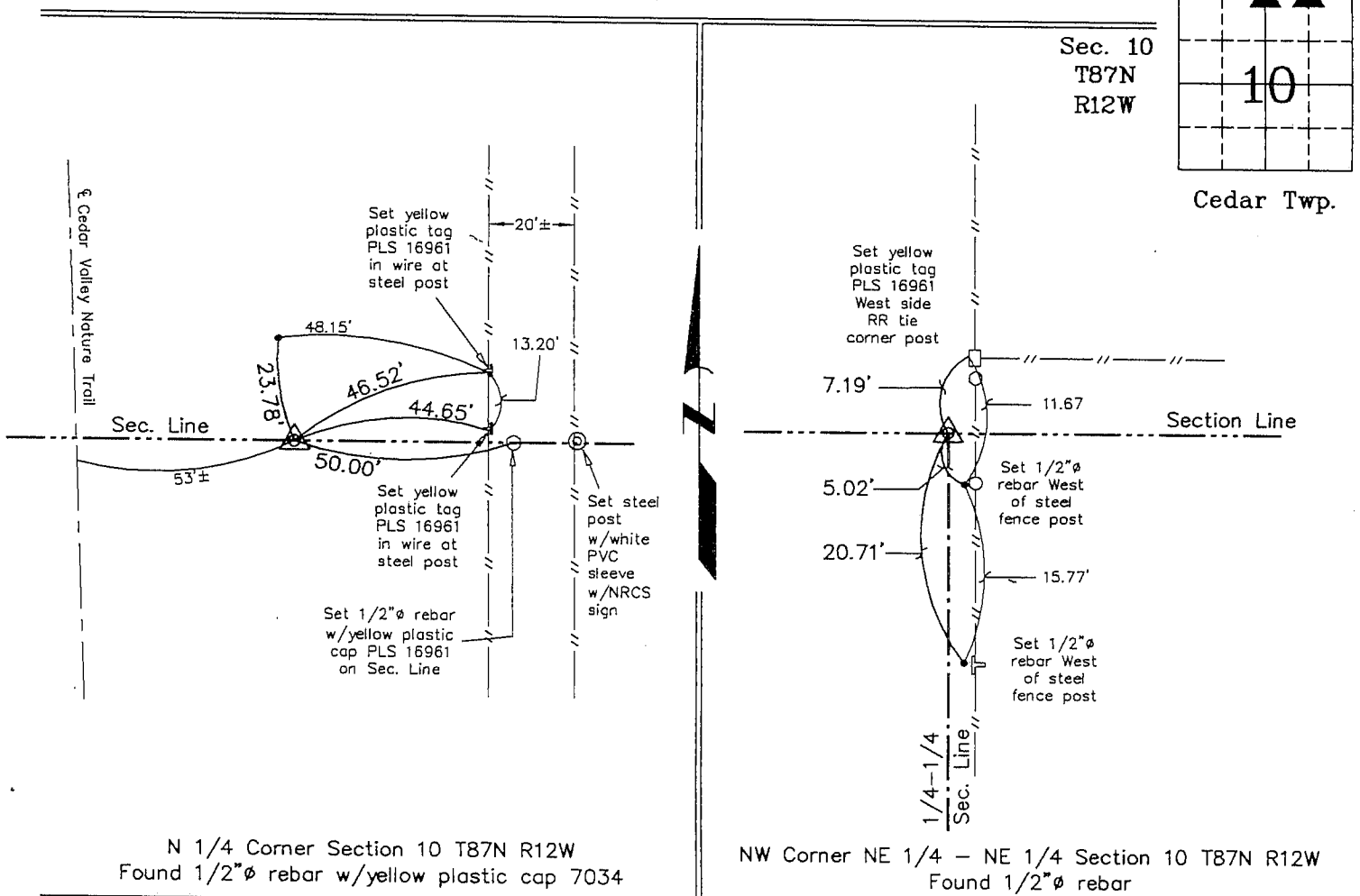
(Show reason for preparing this certificate, the evidence and detailed procedures used in establishing the corner positions and monumentation found or placed.)

Monument Description and Remarks: N 1/4 Corner Section 10 T87N R12W: Found 1/2"Ø rebar w/yellow plastic cap 7034.
NW Corner NE 1/4 - NE 1/4 Section 10 T87N R12W: Found 1/2"Ø rebar.

NOTE: Both Corner monuments were found with information obtained from a Survey and Plat made by Gary G. Brown recorded in the Black Hawk County Recorder's Office November 1991 in Book 298, Page 853.

PLAN - VIEW

(Show a minimum of three reference ties to durable physical objects, relevant monuments and physical conditions that will enable recovery of the corner.)



I hereby certify that this land surveying document was prepared and the related survey work was performed by me or under my direct personal supervision and that I am a duly licensed Land Surveyor under the laws of the State of Iowa.

Michael J. Shimak January 18, 2005
Michael J. Shimak Date
License number 16961
My license renewal date is December 31, 2005.
Sheets covered by this seal: Individual

List Corners to be Indexed			
Corners	Section	Twp.	Range
N 1/4	10	87N	12W
NW-NE-NE	10	87N	12W

Project Number 04118.LS
FB. NRCS #3 PG. 12-22
X:\Section Corners\Sec. 10\10-87-12cd.dwg