

Jeffrey P. Helland, 1107 Technology Parkway, Cedar Falls, Iowa 50613-6951, (319)-266-0161

UNITED STATES PUBLIC LAND SURVEY CORNER CERTIFICATE OF

LAND SURVEY MONUMENTS SITUATED IN SECTION NO. 9, TOWNSHIP NO. 87 NORTH, RANGE
NO. 12 WEST OF THE FIFTH PRINCIPAL MERIDIAN, BLACK HAWK COUNTY, IOWA.
PREVIOUSLY RECORDED IN N/A

(SHOW REASON FOR PREPARING THIS CERTIFICATE, THE EVIDENCE AND DETAILED PROCEDURES USED IN ESTABLISHING THE
CORNER POSITIONS AND MONUMENTATION FOUND OR PLACED.)

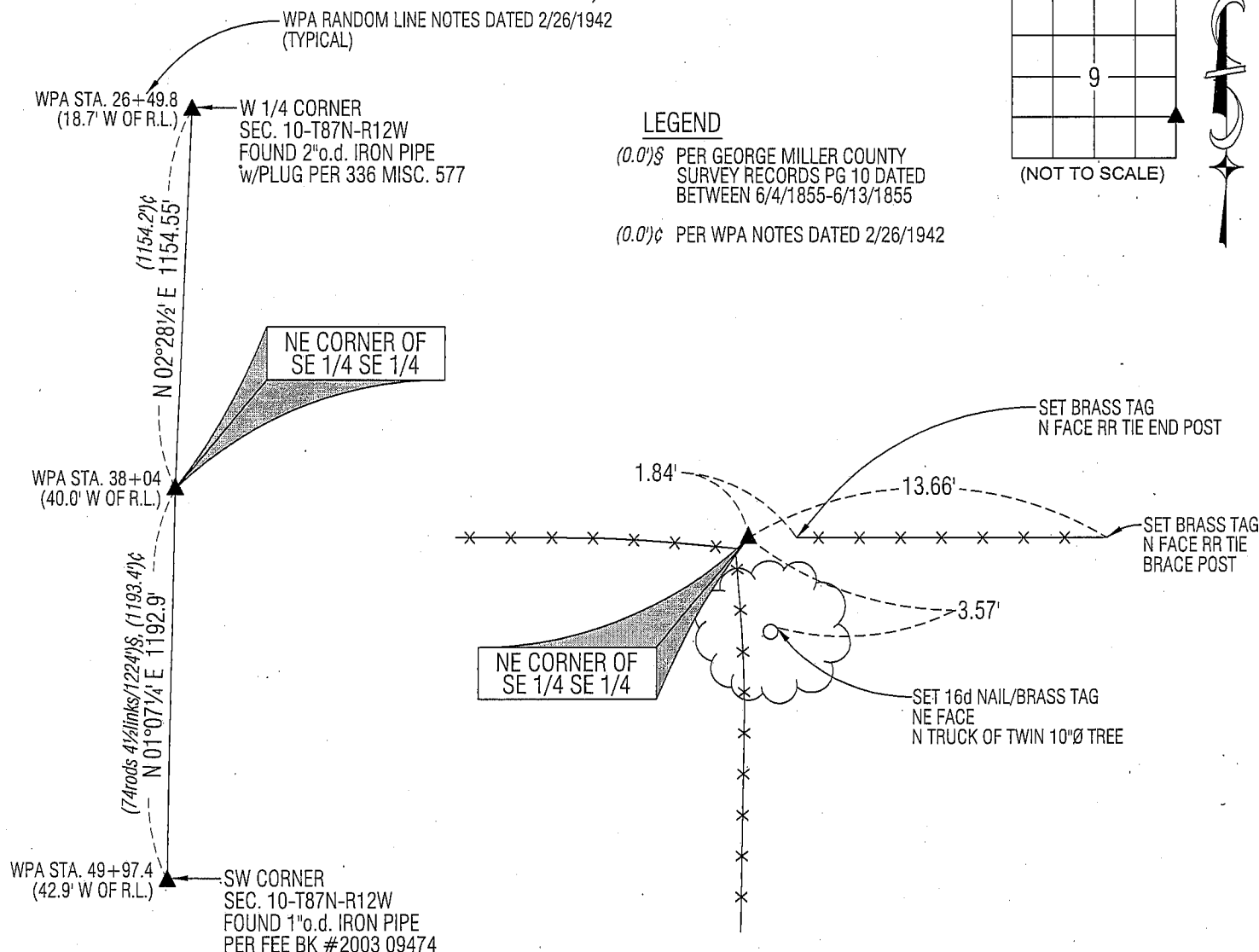
MONUMENT DESCRIPTION AND REMARKS:

NO USPLSCC ON FILE. SURVEY COMPLETED IN THE SW 1/4 SW 1/4 OF SEC. 10-T87N-R12W.

NE CORNER OF SE 1/4 SE 1/4: GEORGE MILLER COUNTY SURVEY RECORDS PG 10 DATED BETWEEN 6/4/1855-6/13/1855
INDICATES A SURVEY OF THE SE 1/4 SE 1/4 OF SEC. 9-T87N-R12W FOR ELIZA BALDWIN AND CALLS FOR [ORIGINAL QUARTER
POST]. WPA NOTES DATED 2/26/1942 INDICATES FENCE WEST @ 38+04 AND FENCE EAST @ 38+00 (BASED UPON
RANDOM LINE DISTANCES FENCES WERE 9.0' WEST OF LINE BETWEEN SE CORNER AND E 1/4 CORNER. STARTED
EXCAVATION AT BASE OF ANCIENT CORNER POST. FOUND ROTTED REMNANTS OF OLD CORNER POST CORRESPONDING TO
1942 WPA POSITION. SET NO. 4 REBAR w/ALUMINUM CAP #16264 AT SAID REMNANTS.

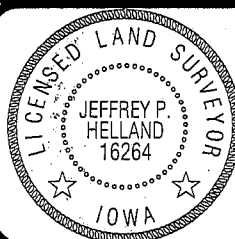
PLAN VIEW

(SHOW A MINIMUM OF THREE REFERENCE TIES TO DURABLE PHYSICAL OBJECTS, RELEVANT MONUMENTS AND PHYSICAL
CONDITIONS THAT WILL ENABLE RECOVERY OF THE CORNER.)



HELLAND ENGINEERING & SURVEYING, LTD.
1107 Technology Parkway
Cedar Falls, Iowa 50613-6951
(319)-266-0161

SHINER = 8D NAIL & 1 5/16"Ø METAL SHINER
BRASS TAG = 13/16"Ø BRASS TAG
OPC = PLASTIC CAP (O=ORANGE, R=RED, Y=YELLOW)
(00)' RECORDED AS FILE NAME: 08-337C2.DWG



I hereby certify that this land surveying document was prepared
and the related survey work was performed by me or under my
direct personal supervision and that I am a duly licensed Land
Surveyor under the laws of the State of Iowa.

Jeffrey P. Helland 12/31/08
Jeffrey P. Helland
License Number 16264
My license renewal date is December 31, 2009.
All pages or sheets are covered by this seal except:

LIST CORNERS TO BE INDEXED

CORNER	SECTION	TOWNSHIP	RANGE
NE COR. SE 1/4 SE 1/4	9	87N	12W
SE COR. NE 1/4 SE 1/4	9	87N	12W
SW COR. NW 1/4 SW 1/4	10	87N	12W
NW COR. SW 1/4 SW 1/4	10	87N	12W

Rec.