

Jeffrey P. Helland, 1107 Technology Parkway, Cedar Falls, Iowa 50613-6951, (319)-266-0161

# UNITED STATES PUBLIC LAND SURVEY CORNER CERTIFICATE OF

LAND SURVEY MONUMENTS SITUATED IN SECTION NO. 9, TOWNSHIP NO. 87 NORTH, RANGE  
NO. 12 WEST OF THE FIFTH PRINCIPAL MERIDIAN, BLACK HAWK COUNTY, IOWA.  
PREVIOUSLY RECORDED IN 336 MISC. 577

(SHOW REASON FOR PREPARING THIS CERTIFICATE, THE EVIDENCE AND DETAILED PROCEDURES USED IN ESTABLISHING THE  
CORNER POSITIONS AND MONUMENTATION FOUND OR PLACED.)

## MONUMENT DESCRIPTION AND REMARKS:

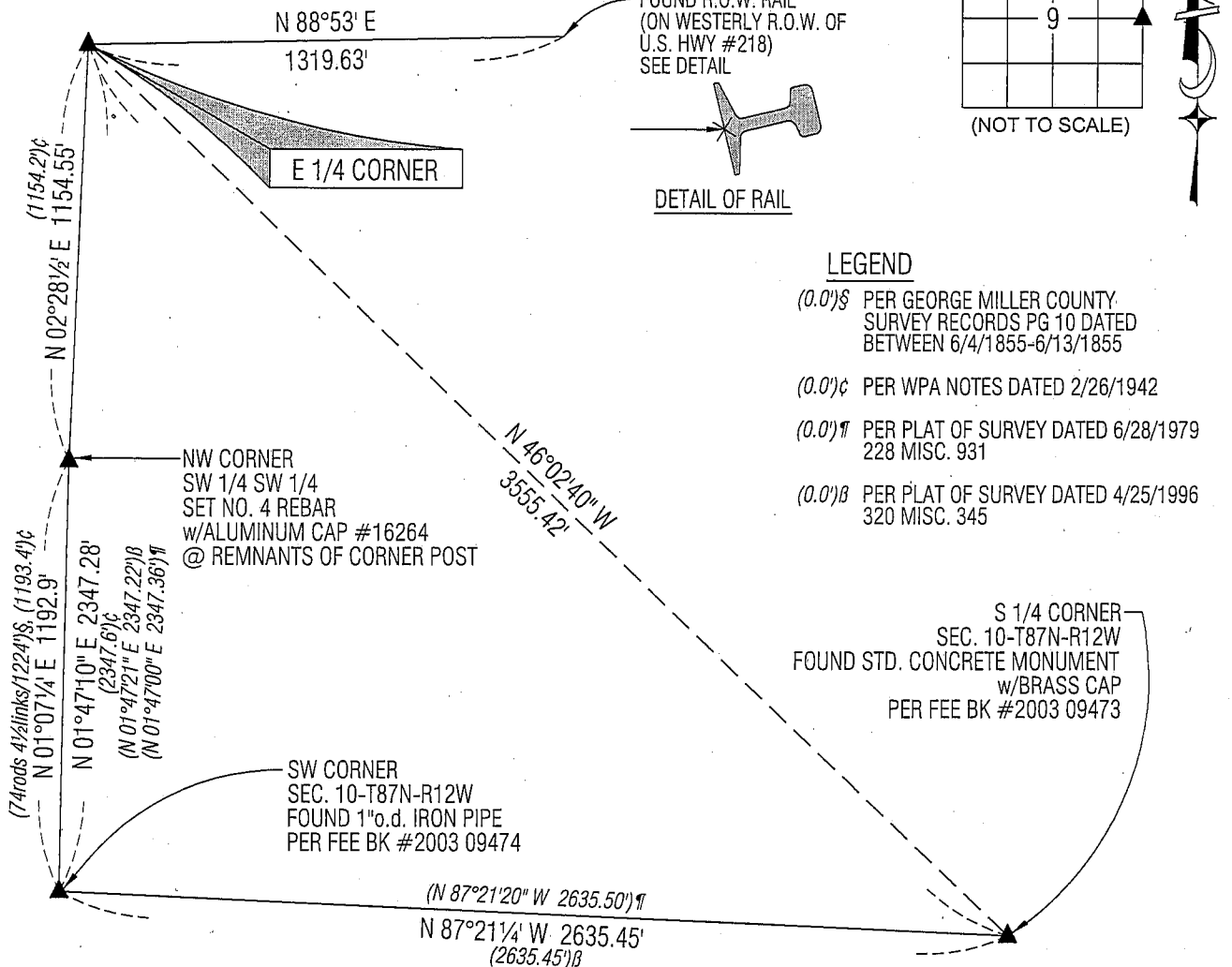
USPLSCC 336 MISC. 577 REFERENCE TIES HAVE CHANGED.  
SURVEY COMPLETED IN THE SW 1/4 SW 1/4 OF SEC. 10-T87N-R12W.

→ E 1/4 CORNER: USPLSCC 336 MISC. 577 DATED 12/7/1999 CALLS FOR [COUNTY TIES CALL FOR CONCRETE MONUMENT  
w/BRASS CAP, CONCRETE MONUMENT w/BRASS CAP WAS FOUND IN 6/1979, PLAT OF SURVEY RECORDED IN MISC. BK 319  
PG 985 CALLS FOR 1.5" IRON PIPE w/PLUG. FOUND 2" PIPE w/PLUG AND DUG FOR CONCRETE MONUMENT. NO CONCRETE  
MONUMENT FOUND, USED 2" PIPE (0.2' DEEP)]. ALL REFERENCE TIES HAVE BEEN OBLITERATED. FOUND 2"o.d. IRON PIPE  
w/PLUG ON TOP 0.3' DEEP, NOW IN CULTIVATED FIELD. LOWERED TO DEPTH OF 0.7'±.

## PLAN VIEW

(SHOW A MINIMUM OF THREE REFERENCE TIES TO DURABLE PHYSICAL OBJECTS, RELEVANT MONUMENTS AND PHYSICAL  
CONDITIONS THAT WILL ENABLE RECOVERY OF THE CORNER.)

NO GERMANE, DURABLE OBJECTS TO  
REFERENCE, FALLS IN CULTIVATED FIELD

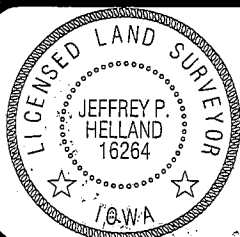


(BEARINGS ARE ASSUMED)



HELLAND ENGINEERING & SURVEYING, LTD.  
1107 Technology Parkway  
Cedar Falls, Iowa 50613-6951  
(319)-266-0161

SHINER = 8D NAIL & 1 5/16"Ø METAL SHINER  
BRASS TAG = 13/16"Ø BRASS TAG  
OPC = PLASTIC CAP (O=ORANGE, R=RED, Y=YELLOW)  
(00') RECORDED AS FILE NAME: 08-337C1.DWG



I hereby certify that this land surveying document was prepared  
and the related survey work was performed by me or under my  
direct personal supervision and that I am a duly licensed Land  
Surveyor under the laws of the State of Iowa.

Jeffrey P. Helland 12/30/08  
Jeffrey P. Helland  
License Number 16264  
My license renewal date is December 31, 2009.  
All pages or sheets are covered by this seal except:

## LIST CORNERS TO BE INDEXED

CORNER	SECTION	TOWNSHIP	RANGE
E 1/4 CORNER	9	87N	12W
W 1/4 CORNER	10	87N	12W

Rec. 1