

PRANGE SURVEYING 3304 PANTHER LANE CEDAR FALLS IA 50613

Prepared by Dennis R. Prange, L.S., Prange Surveying, 3304 Panther Lane, Cedar Falls, Iowa 50613, (319) 277-4935

UNITED STATES PUBLIC LAND SURVEY CORNER CERTIFICATE
OF

Land Survey Monuments situated in Section No. 9, Township No. 87 North, Range No. 12 West, of the Fifth Principal Meridian, Black Hawk County, Iowa.
Previously recorded in Book N/A on Page in the office of the County Recorder.
(book, page, document number, etc.)

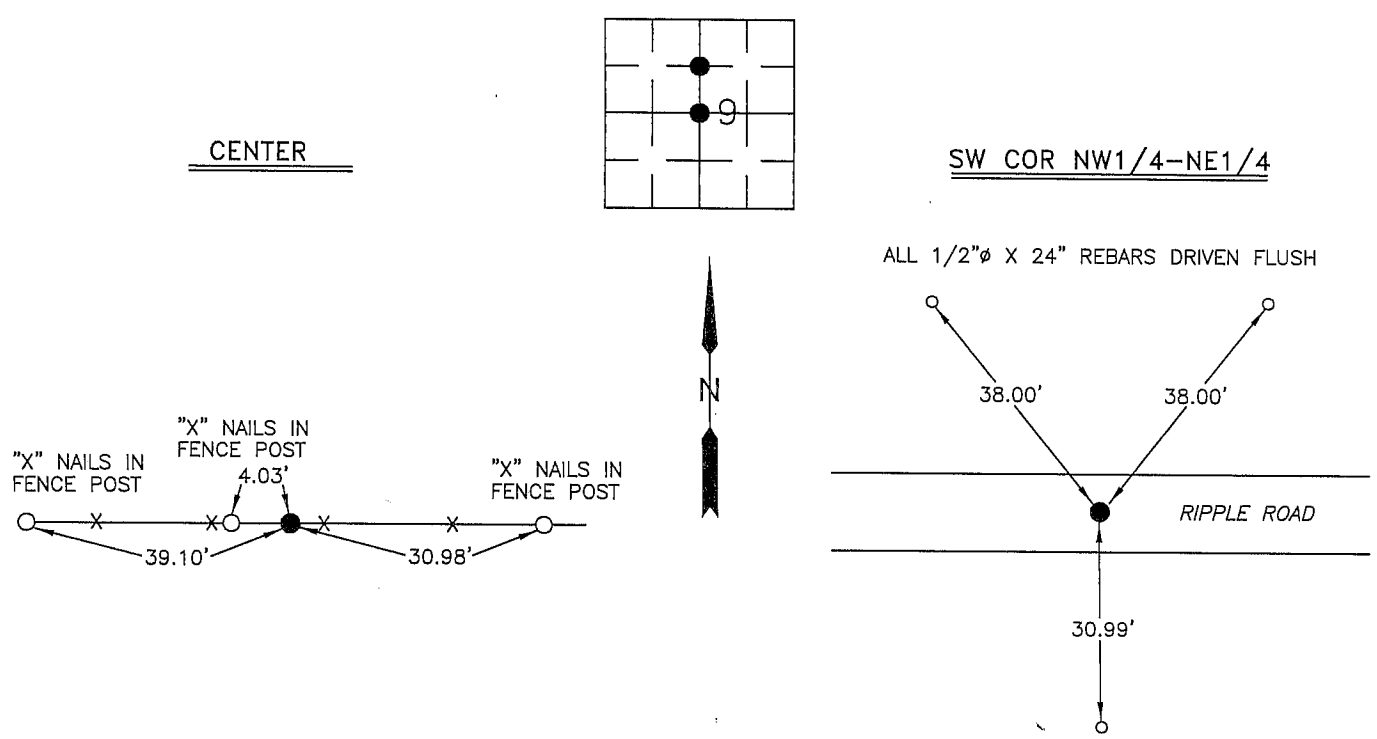
(Show reason for preparing this certificate, the evidence and detailed procedures used in establishing the corner positions and monumentation found or placed.)

Monument Description and Remarks: Center Sec. 9-87-12 - Found stone 16" deep, Surveyor's
Record Book 1, Page 579. Set 1/2"Ø X 10" rebar with cap no. 10040 above.
SW Corner NW1/4-NE1/4 Sec. 9-87-12 - Set 1/2"Ø X 24" rebar with cap no. 10040 midway
between Center Sec. 9 and N1/4 Corner Sec. 9 .

PLAN - VIEW

(Show a minimum of three reference ties to durable physical objects, relevant monuments and physical conditions that will enable recovery of the corner.)

NOT TO SCALE



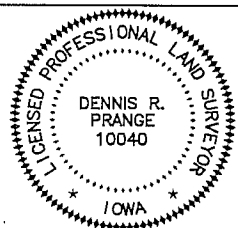
ALL TIES ARE HORIZONTAL DISTANCES

I hereby certify that this land surveying document was prepared by me or under my direct personal supervision and that I am a duly licensed Professional Land Surveyor under the laws of the State of Iowa.

Signed: *Dennis R. Prange*
Dennis R. Prange, L.S. Iowa License No. 10040

Date: May 26, 2006

SEAL



My License renewal date is December 31, 2006.
Pages or sheets covered by this seal : this page only

Corners	List Corners to be Indexed Section	Twp	Range
CENTER	9	87	12
SW COR NW1/4-NE1/4	9	87	12

Drawn by: DRP

Checked by: