

UNITED STATES PUBLIC LAND SURVEY CORNER CERTIFICATE

OF *Recorded*

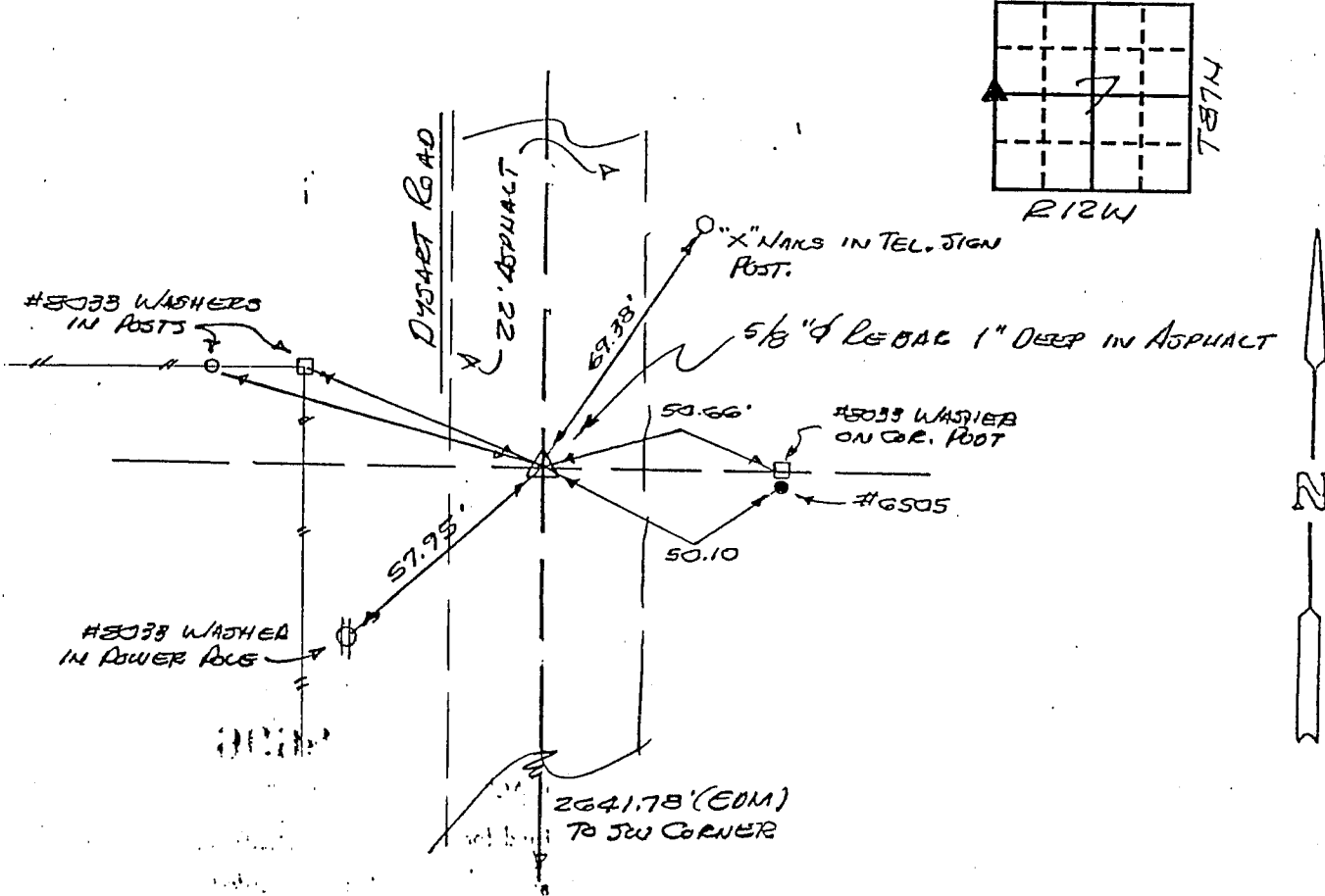
Land Survey Monuments situated in Section 7, Township 87N, Range 12W, of the Fifth Principal Meridian, BLACK HAWK County, Iowa.  
Previously recorded in N/A in County Recorder's Office.

(book, page, document number, etc.)  
reason for preparing this certificate, the evidence and detailed procedures used in establishing the corner positions and monumentation found or placed.)

Monument Description and Remarks: Found 5/8" Ø REBAR PER BLACK HAWK COUNTY  
TIES.

PLAN - VIEW

(Show a minimum of three reference ties to durable physical objects, relevant monuments and physical conditions that will enable recovery of the corner.)



W 1/4 COR. SEC. 7- T87N-R12W

I hereby certify that the survey work was completed and this certificate was prepared by me or under my direct personal supervision and that I am a duly registered land surveyor under the laws of the state of Iowa.

Signature: F. William King  
Name typed or printed: F. William King

Date: 12-17-1990 Reg. No. 8033

List Corners to be Indexed			
Corners	Section	Twp	Range
W 1/4	7	87N	12W
E 1/4	12	87N	13W

