

Recorded

SLSI 9-90

# UNITED STATES PUBLIC LAND SURVEY CORNER CERTIFICATE

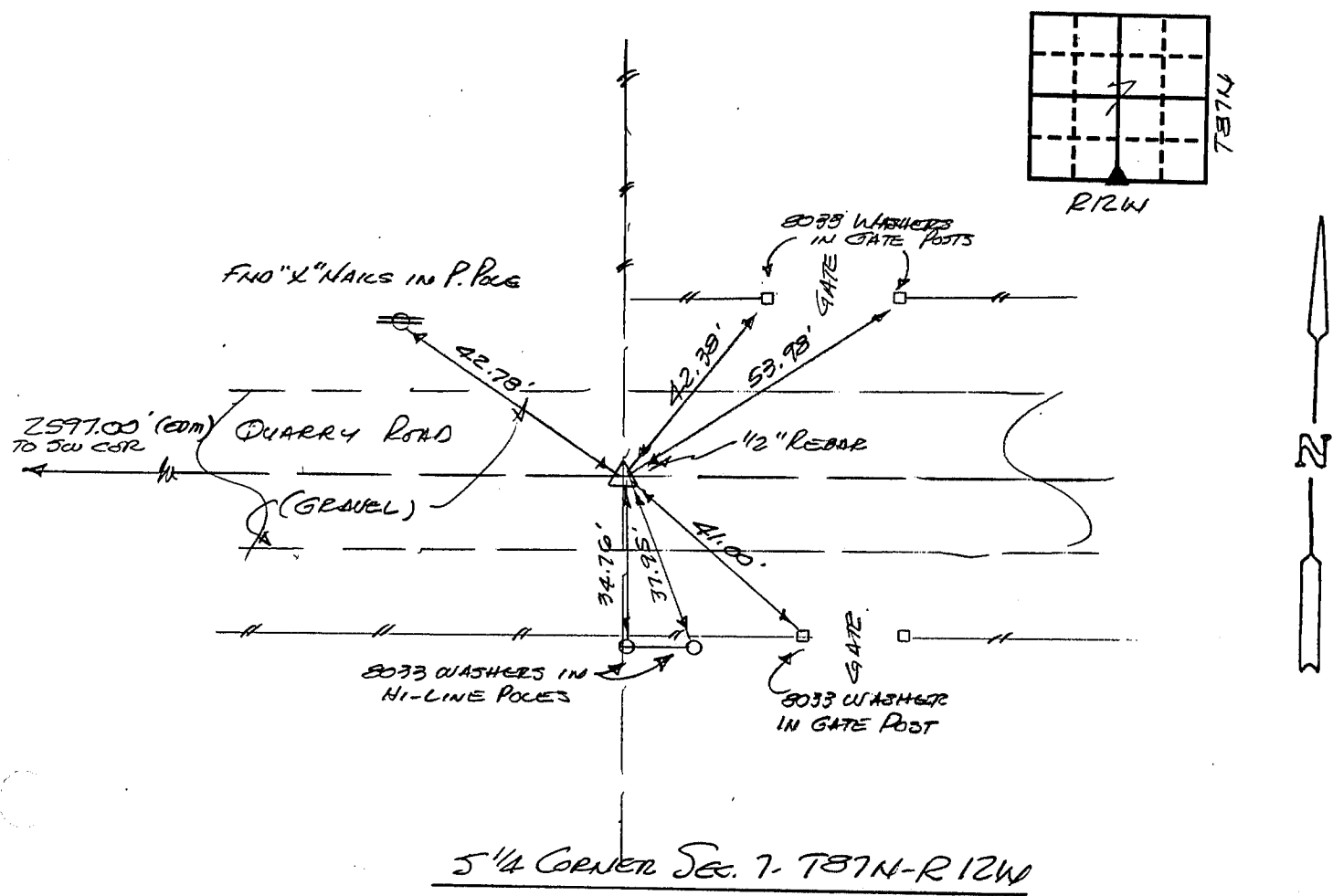
OF

Land Survey Monuments situated in Section 7, Township 87N, Range 12W, of the Fifth Principal Meridian, BLACK HAWK County, Iowa.  
Previously recorded in N/A in County Recorder's Office.  
(book, page, document number, etc.)

(Show reason for preparing this certificate, the evidence and detailed procedures used in establishing the corner positions and monumentation found or placed.)  
Monument Description and Remarks: FOUND 1/2" REBAR 3" DEEP IN GRAVEL ROAD  
PER BLACK HAWK COUNTY TIES.

## PLAN - VIEW

(Show a minimum of three reference ties to durable physical objects, relevant monuments and physical conditions that will enable recovery of the corner.)



I hereby certify that the survey work was completed and this certificate was prepared by me or under my direct personal supervision and that I am a duly registered land surveyor under the laws of the state of Iowa.

Signature: F. William King  
Name typed or printed: F. William King  
Date: 12-17-1990 Reg. No. 8033



Corners	List Corners to be Indexed		
	Section	Twp	Range
5 1/4	7	787N	R12W
N 1/4	18	87	12

MISC. BK. 293 P. 696