

INDEX

BLACK HAWK COUNTY, IOWA:ss

FEE BOOK # 2004 35681

PROOF

FILED FOR RECORD JUN 7, 2004, AT 2:00 P. M. FEE 1-5.00/- 5.00/

COMPARED

BLACK HAWK COUNTY RECORDER

WAYNE CLAASSEN ENGINEERING AND SURVEYING, INC.
P.O. BOX 898 WATERLOO, IOWA 50704-0898ENV WAYNE CLAASSEN ENGINEERING
PHONE: (VOICE) 319-235-6294
(FAX) 319-235-0028

UNITED STATES PUBLIC LAND SURVEY CORNER CERTIFICATE

Land Survey Monuments situated in Section 7, Township 87 North, Range 12 West, of the Fifth Principal Meridian, Black Hawk County, Iowa.Previously recorded in _____ in County Recorder's Office.
(book, page, document number, etc.)

(Show reason for preparing this certificate, the evidence and detailed procedures used in establishing the corner positions and monumentation found or placed.)

Monument Description and Remarks No corner certificate on file.

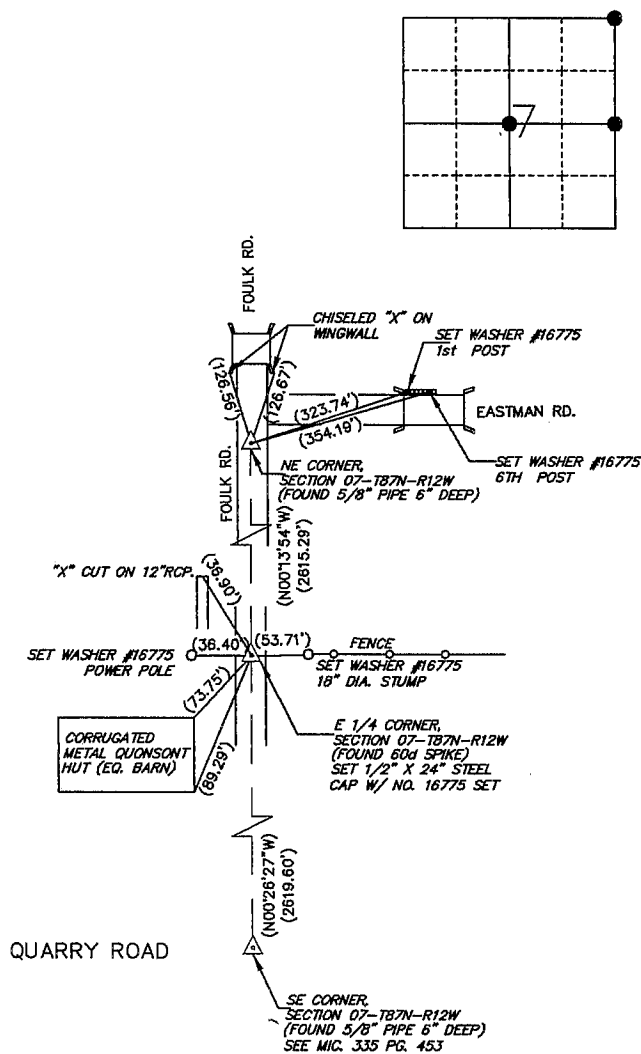
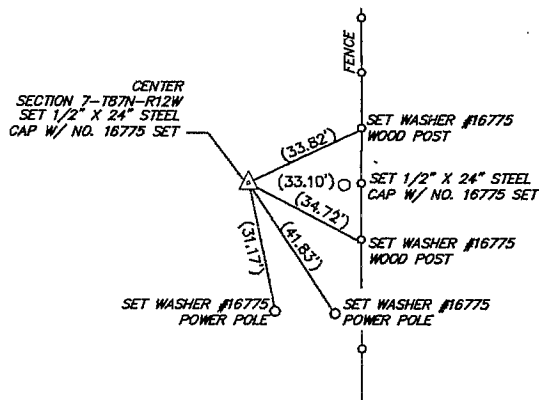
Northeast corner. Found 5/8" pipe 6" deep in gravel road.

East 1/4 Corner. Found 60d spike in gravel road based upon WPA tie. Replaced with 1/2" x 24" steel Rebar with red cap #16775 4" deep in gravel.

Center of section Set 1/2" x 24" steel Rebar with red cap #16775, at intersection of opposite quarter corners.

PLAN - VIEW

(Show a minimum of three reference ties to durable physical objects, relevant monuments and physical conditions that will enable recovery of the corner.)



I hereby certify that the survey work was completed and this certificate was prepared by me or under my direct personal supervision and that I am a duly licensed land surveyor under the laws of the state of Iowa.

Signature: _____

David L. Schell, L.S.

Date: JUNE 03, 2004 Lic. No. 16775

My license renewal date is December 31, 2004

SEAL

List Corners to be Indexed

Corners	Section	Twp	Range
NE Corner,	7	87 N	12 W
East 1/4 Cor.,	7	87 N	12 W
Center,	7	87 N	12 W