

Prepared by & Return to: Isaiah M. Reicks, HRS, LLC, 2206 East Bremer Avenue, Waverly, IA 50677, Phone 319-483-5187

Land Survey Monument situated in
Section **7**, Township **87** North, Range **12** West of the Fifth Principal Meridian, **Black Hawk** County, Iowa.
Not on file in the County Recorder's Office.

This certificate is being prepared in compliance with Iowa Code Chapter 355.11 because:

- ☒ There is no certificate on file for this corner.
- ☐ There are no longer three valid ties of record.
- ☐ There are changes to reference ties of record.
- ☐ There is change of monumentation of record.
- ☐ To clarify description of record monument (ties).

Monument Description and Remarks:

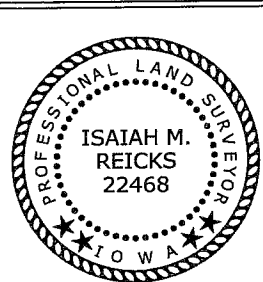
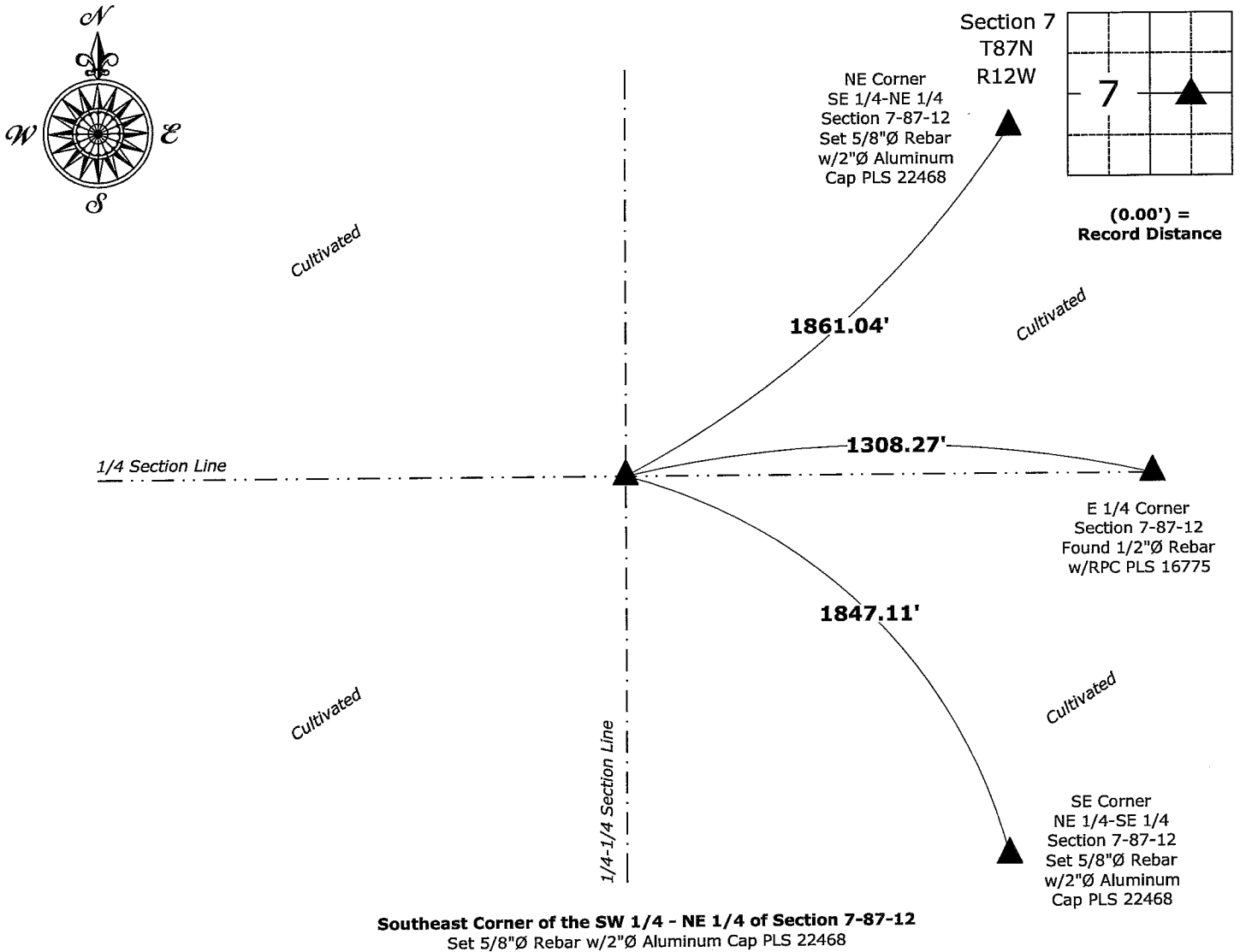
Southeast Corner of the SW 1/4 - NE 1/4:

Set 5/8"Ø Rebar w/2"Ø Aluminum Cap PLS 22468 equidistant and on line between the East 1/4 Corner and the Center of said Section.

An extensive search of all of the records within the County offices was performed as part of the section corner recovery. There were no records located of the perpetuation of a monument at this corner.

Plan View - Not to Scale

(Show a minimum of three reference ties to durable physical objects, relevant monuments and physical conditions that will enable recovery of the corner.)



I hereby certify that this land surveying document was prepared and the related survey work was performed by me or under my direct personal supervision and that I am a duly licensed Land Surveyor under the laws of the State of Iowa.

Isaiah M. Reicks 2-7-24
Isaiah M. Reicks Date:
License number 22468
My license renewal date is December 31, 2025.
Sheets covered by this seal: Individual sheet only

List Corner to be Indexed			
Corner	Section	Township	Range
SE-SW-NE	7	87	12

Project Number: 2023-596
FB: Black Hawk, Page(s) 10-11