

WAYNE CLAASSEN ENGINEERING AND SURVEYING, INC.  
P.O. BOX 898 WATERLOO, IOWA 50704-0898PHONE: (VOICE) 319-235-6294  
(FAX) 319-235-0028

## UNITED STATES PUBLIC LAND SURVEY CORNER CERTIFICATE

Land Survey Monuments situated in Section 06, Township 87 North, Range 12 West, of the Fifth Principal Meridian, Black Hawk County County, Iowa.  
Previously recorded in \_\_\_\_\_ in County Recorder's Office.  
(book, page, document number, etc.)

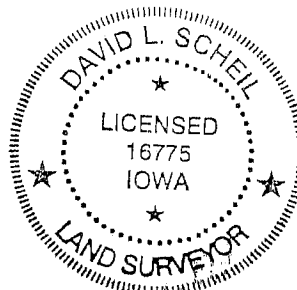
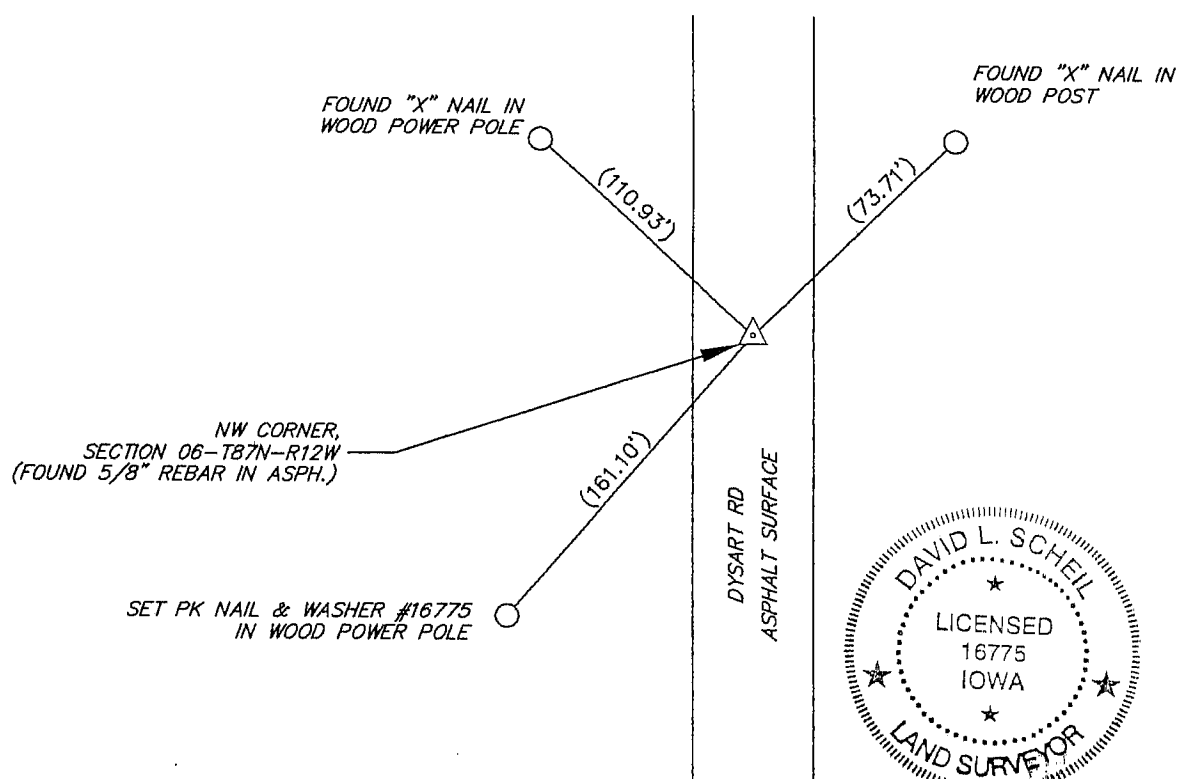
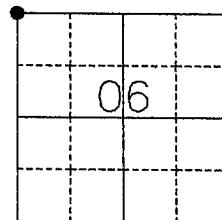
(Show reason for preparing this certificate, the evidence and detailed procedures used in establishing the corner positions and monumentation found or placed.)

Monument Description and Remarks \_\_\_\_\_

NW Corner: no certificate on file. Found 5/8" rebar flush in asphalt as per Black Hawk Co. Engineer's Office.

## PLAN - VIEW

(Show a minimum of three reference ties to durable physical objects, relevant monuments and physical conditions that will enable recovery of the corner.)



BK. 621, PG. 41

I hereby certify that this land surveying document was prepared and the related survey work was performed by me or under my direct personal supervision and that I am a duly Licensed Land Surveyor under the laws of the State of Iowa.

Signature: David L. Scheil  
David L. Scheil, L.S.Date: SEPT. 07, 2006 Lic. No. 16775Pages or Sheets Covered by this Seal: THIS SHEET ONLY.

My license renewal date is December 31, 2006

SEAL

## List Corners to be Indexed

Corners	Section	Twp	Range
NW CORNER,	06	87 N	12 W