

WAYNE CLAASSEN ENGINEERING AND SURVEYING, INC.
P.O. BOX 898 WATERLOO, IOWA 50704-0898PHONE: (VOICE) 319-235-6294
(FAX) 319-235-0028

UNITED STATES PUBLIC LAND SURVEY CORNER CERTIFICATE

Land Survey Monuments situated in Section 06
31, Township 87 North
12 West, of the Fifth Principal Meridian, Black Hawk County County, Iowa.Previously recorded in _____ in County Recorder's Office.
(book, page, document number, etc.)

(Show reason for preparing this certificate, the evidence and detailed procedures used in establishing the corner positions and monumentation found or placed.)

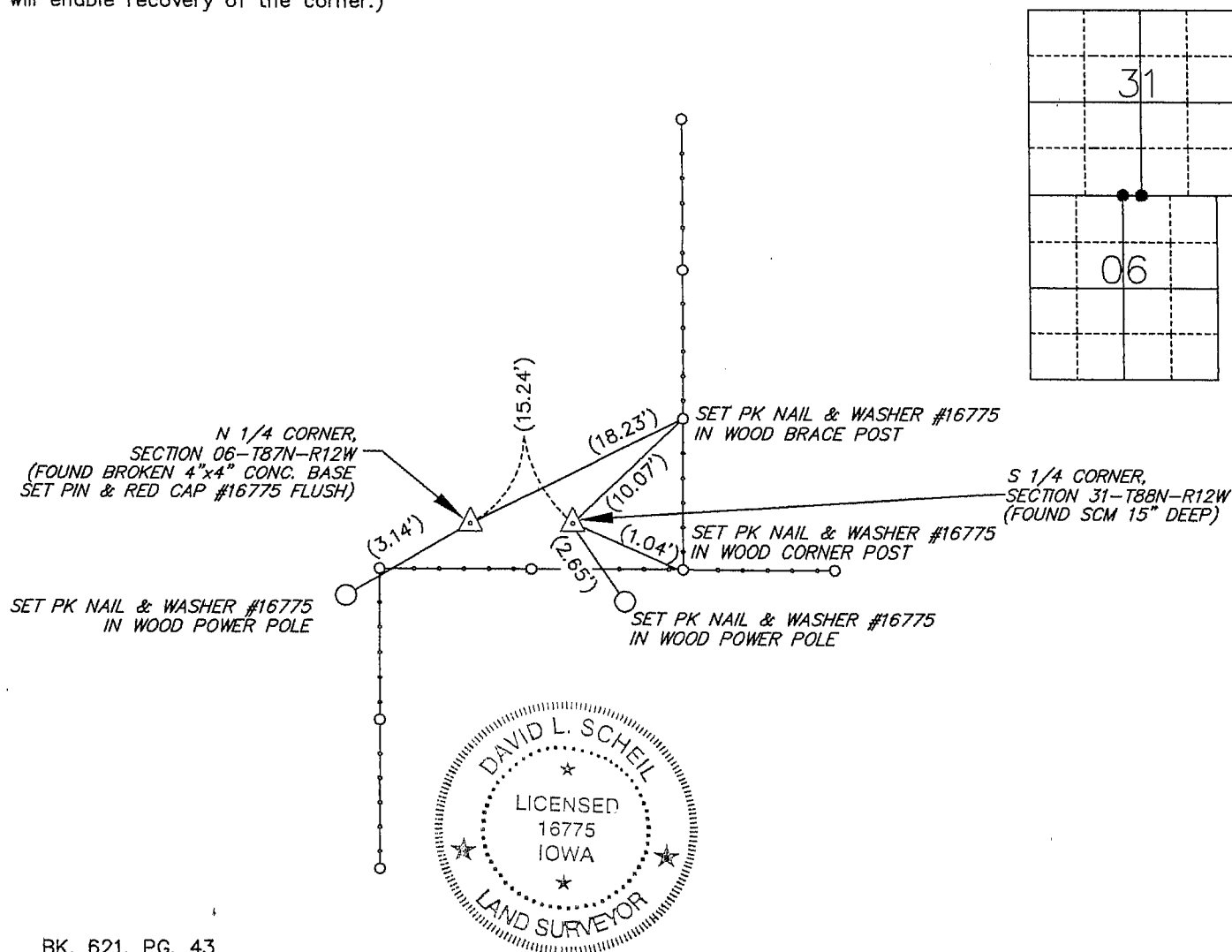
Monument Description and Remarks _____

N 1/4 Corner: no certificate on file. Found broken 4"x4" concrete monument base 15" deep. Split base and set pin and red cap #16775 flush. Found monument as per Black Hawk County WPA section corner ties and dimensions.

S 1/4 Corner: no certificate on file. Found SCM 2" deep 15.24' East of the N 1/4 corner of Sec. 06 as per Black Hawk County WPA section corner ties and dimensions.

PLAN - VIEW

(Show a minimum of three reference ties to durable physical objects, relevant monuments and physical conditions that will enable recovery of the corner.)



BK. 621, PG. 43

I hereby certify that this land surveying document was prepared and the related survey work was performed by me or under my direct personal supervision and that I am a duly Licensed Land Surveyor under the laws of the State of Iowa.

Signature: _____

David L. Schell, L.S.

Date: SEPT - 07, 2006 Lic. No. 16775Pages or Sheets Covered by this Seal: THIS SHEET ONLY.

My license renewal date is December 31, 2006

SEAL

List Corners to be Indexed

Corners	Section	Twp	Range
N 1/4 CORNER,	06	87 N	12 W
S 1/4 CORNER,	31	88 N	12 W