

Patricia A. Sloss

BLACK HAWK COUNTY RECORDER

HELLAND ENGINEERING & SURVEYING LTD

Paul H. Helland, 1107 Technology Parkway, Cedar Falls, Iowa 50613-6951, (319)-266-0161

UNITED STATES PUBLIC LAND SURVEY CORNER CERTIFICATE
OFLAND SURVEY MONUMENTS SITUATED IN SECTION NO. 5, TOWNSHIP NO. 87 NORTH, RANGE
NO. 12 WEST OF THE FIFTH PRINCIPAL MERIDIAN, BLACK HAWK COUNTY, IOWA.

PREVIOUSLY RECORDED IN BOOK _____, PAGE _____.

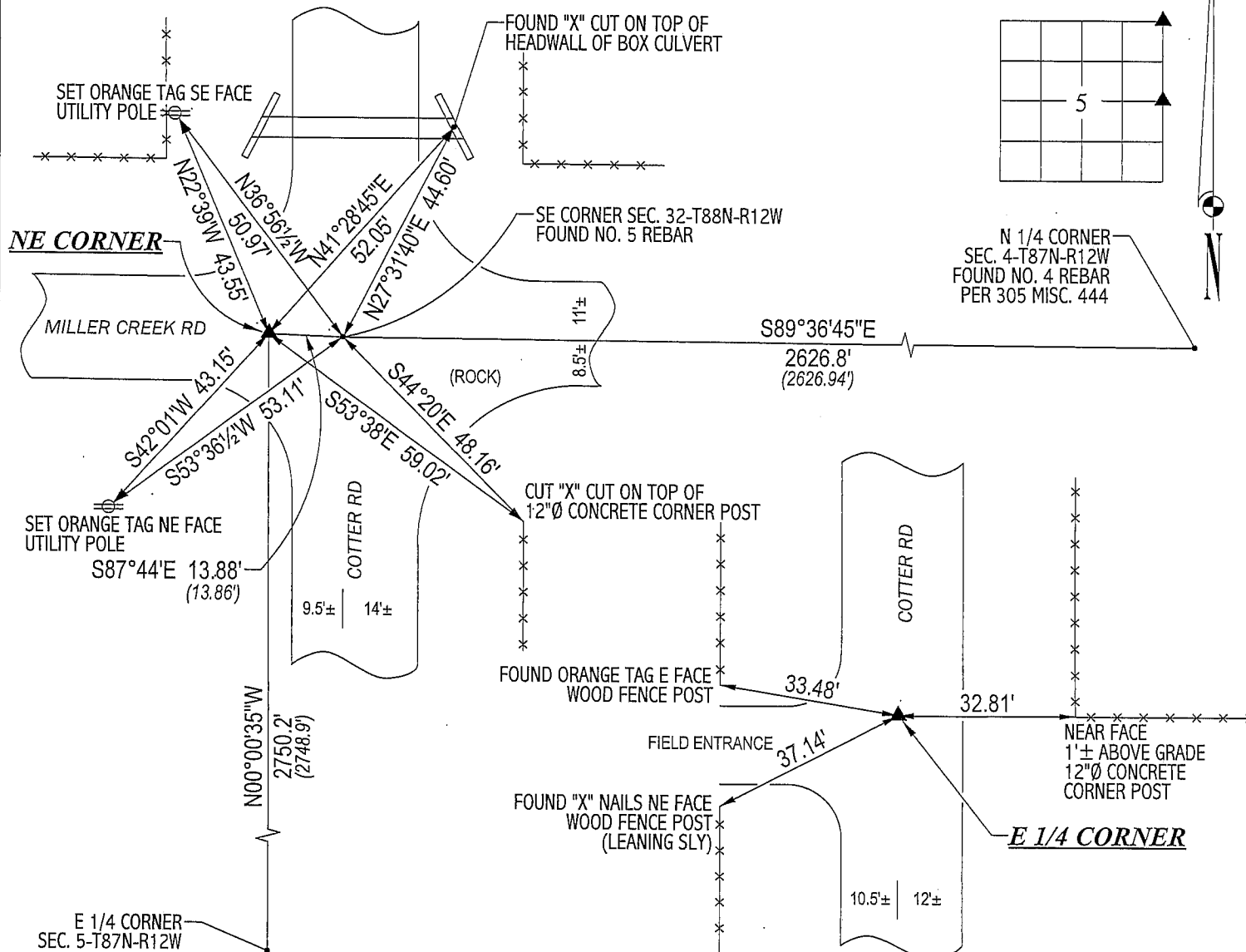
(SHOW REASON FOR PREPARING THIS CERTIFICATE, THE EVIDENCE AND DETAILED PROCEDURES USED IN ESTABLISHING THE
CORNER POSITIONS AND MONUMENTATION FOUND OR PLACED.)

MONUMENT DESCRIPTION AND REMARKS:

NO CORNER CERTIFICATES ON FILE. SURVEY DONE IN NWRL 1/4 OF SEC. 4-T87N-R12W.

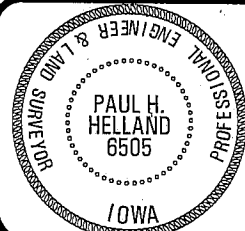
- NE CORNER: FOUND NO. 4 REBAR w/ORANGE CAP #6505 SET BY HES 9/6/1991 ABOVE A CONCRETE MONUMENT. CORNER IS 0.1' DEEP.
- E 1/4 CORNER: A 16d NAIL WAS FOUND BY HES 9/6/1991 PER PLAT OF SURVEY 319 MISC. 323. SAID 16d NAIL WAS FOUND w/ORANGE FLAGGING. AFTER FURTHER EXCAVATION FOUND CONCRETE MONUMENT w/BRASS CAP 0.6' DEEP 1.48' NORTH & 0.47' EAST OF SAID NAIL. SET NO. 4 REBAR ON SOUTH SIDE OF CONCRETE MONUMENT FOR MAGNETIC DETECTION. REMOVED 16d NAIL.

PLAN VIEW

(SHOW A MINIMUM OF THREE REFERENCE TIES TO DURABLE PHYSICAL OBJECTS, RELEVANT MONUMENTS AND PHYSICAL
CONDITIONS THAT WILL ENABLE RECOVERY OF THE CORNER.)**HELLAND ENGINEERING & SURVEYING, LTD.**
1107 Technology Parkway
Cedar Falls, Iowa 50613-6951
(319)-266-0161

(00.00') - WPA CHAINING NOTES DATED 8/22/1941 & 10/31/1939

FILE NAME: 02-338C1.DRG

I hereby certify that this land surveying document was prepared
and the related survey work was performed by me or under my
direct personal supervision and that I am a duly licensed Land
Surveyor under the laws of the State of Iowa.

Paul H. Helland

License Number 6505

My license renewal date is December 31, 2003.

All pages or sheets are covered by this seal except:

LIST CORNERS TO BE INDEXED

CORNER	SECTION	TOWNSHIP	RANGE
NE CORNER	5	87N	12W
E 1/4 CORNER	5	87N	12W