

WSS

INDEX *✓* BLACK HAWK COUNTY, IOWA:ss

FEE BOOK # 2006 12806

PROOF *✓* FILED FOR RECORD NOV 16, 2005, AT 11:00 A.M. FEE N/C

COMPARED *✓* *Patricia J. Sloss* BLACK HAWK COUNTY RECORDER

BLACK HAWK COUNTY ENGINEER

PREPARED BY: BLACK HAWK COUNTY ENGINEERS OFFICE
316 E. FIFTH STREET, ROOM 211 WATERLOO, IOWA 50703

PH.# (319) 833-3008 SLSI 9-94
FAX.# (319) 833-3139 CERT 12-96

UNITED STATES PUBLIC LAND SURVEY CORNER CERTIFICATE OF
Land Survey Monuments situated in Section 04, Township 87 N,
Range 12 W, of the Fifth Principal Meridian, BLACK HAWK County, Iowa.
Previously recorded in FEE Book 2003, Page 18424, in County Recorder's Office.
(and) 2003 17452

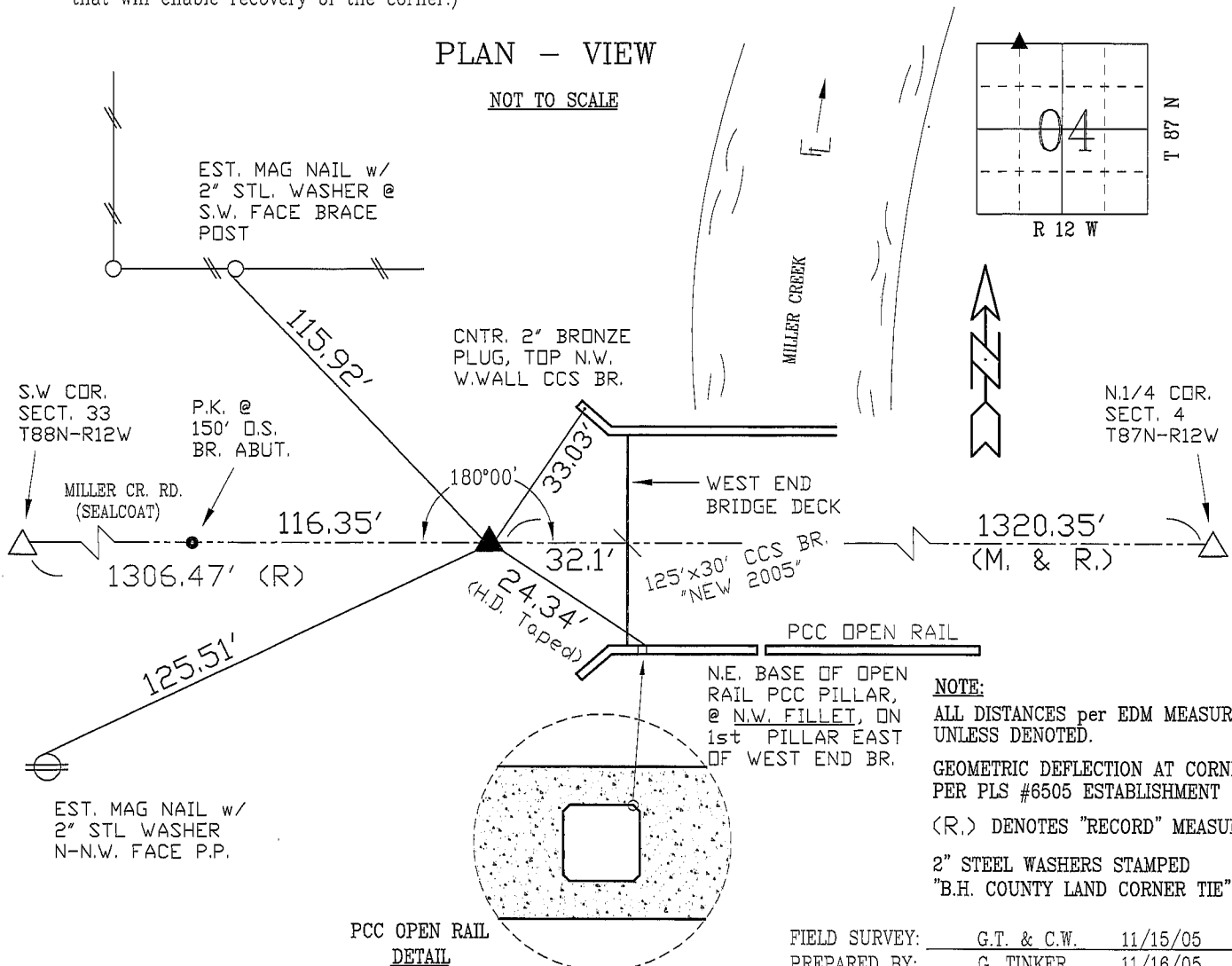
(Show reason for preparing this certificate, the evidence and detailed procedures used in establishing the corner positions and monumentation found or placed.)

Monument Description and Remarks: N.E. COR., N.W.FRAC.1/4-N.W.FRAC.1/4
FOUND MAG NAIL IN SEALCOAT PRIOR TO BR. REMOVAL, AUG. 2005. CORNER
REF. TO TOWNSHIP LINE PER PLS. #6505 ESTABLISHMENT, OFFSET PK. NAIL
SET PER BR. PROJECT CONSTR. & LOC. 116.35' WEST ON TWNSHP. LINE REF.
CORNER RESET w/ #5 REBAR x 32" L. & 2" ALUM. CAP STAMPED "B.H. COUNTY
LAND CORNER" @ 3" DEEP IN GRANULAR RD. SURFACE. ASSUME FUT. SEAL-
COAT MAINT. FOR FUT. RECOVERY.

(Show a minimum of three reference ties to durable physical objects, relevant monuments and physical conditions that will enable recovery of the corner.)

PLAN - VIEW

NOT TO SCALE



CERTIFICATION

I hereby certify that this land surveying document was prepared and the related survey work was performed by me or under my direct personal supervision and that I am a duly licensed Land Surveyor under the laws of the State of Iowa.

Geoffrey Allen Tinker 11/16/05
Geoffrey Allen Tinker (date)

License Number 15748

My license renewal date is December 31, 2006

Pages or sheets covered by this seal:

This Land Corner Certificate Only.

LIST CORNERS TO BE INDEXED

Corner	Section	Township	Range
N.E. COR.	04	87 N	12 W
NW FRAC. 1/4-NW FRAC. 1/4			

NOTE:
ALL DISTANCES per EDM MEASURE, UNLESS DENOTED.
GEOMETRIC DEFLECTION AT CORNER PER PLS #6505 ESTABLISHMENT
(R.) DENOTES "RECORD" MEASURE
2" STEEL WASHERS STAMPED "B.H. COUNTY LAND CORNER TIE"

FIELD SURVEY: G.T. & C.W. 11/15/05
PREPARED BY: G. TINKER 11/16/05