

United States Public Land Survey Corner Certificate

Land Survey Monument situated in
Section **4**, Township **87** North, Range **12** West of the Fifth Principal Meridian, **Black Hawk** County, Iowa.
Not on file in the County Recorder's Office.

This certificate is being prepared in compliance with Iowa Code Chapter 355.11 because:

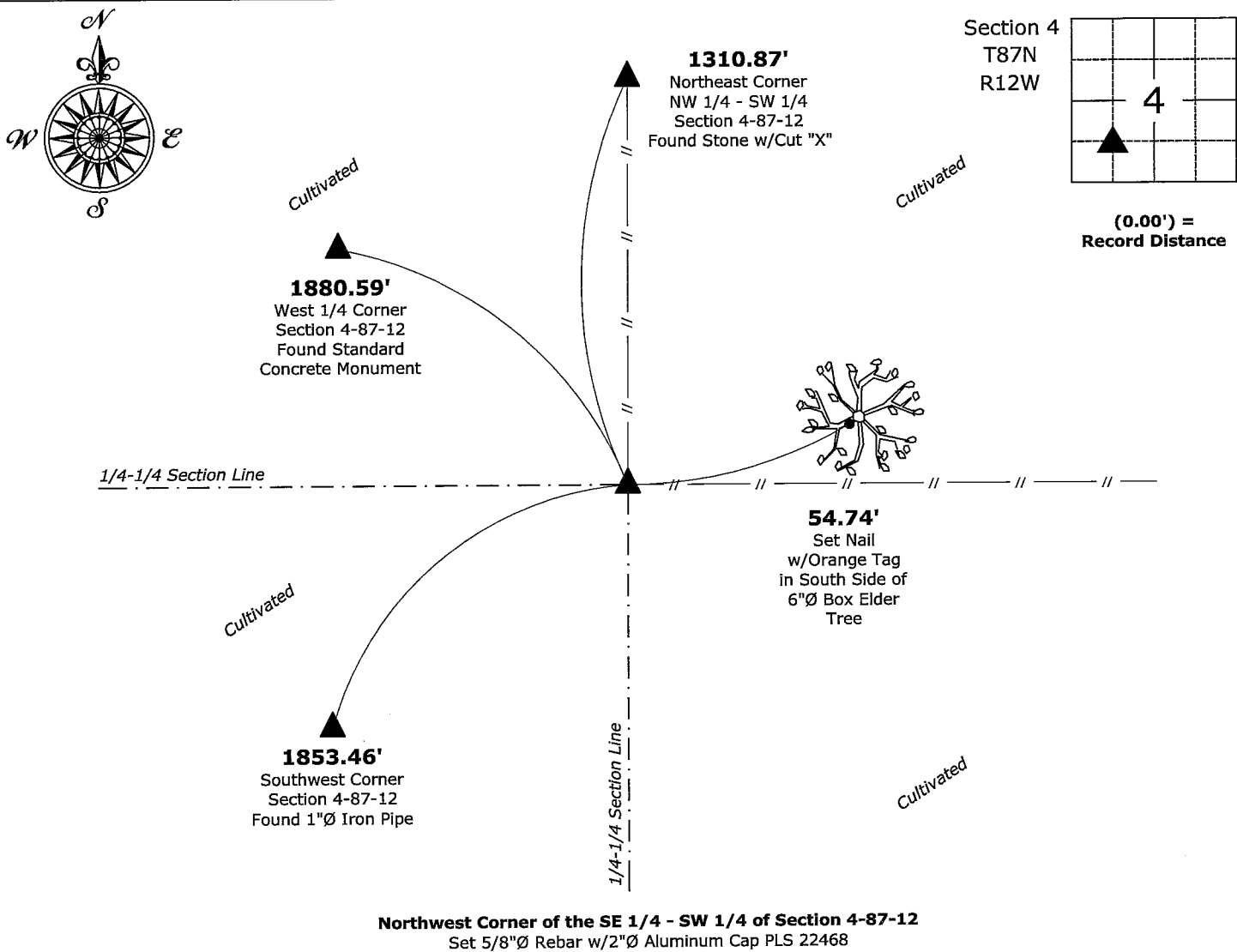
- ☒ There is no certificate on file for this corner.
☐ There are no longer three valid ties of record.
☐ There are changes to reference ties of record.
☐ There is change of monumentation of record.
☐ To clarify description of record monument (ties).

Monument Description and Remarks:

Northwest Corner of the SE 1/4 - SW 1/4: Historical Survey by John Ball, on Page 400 calls for a "Stone", on file in the County Engineer's Office. Searched for said Stone, unable to recover, therefore, Set 5/8"Ø Rebar w/2"Ø Aluminum Cap PLS 22468 at the intersection of 1/4-1/4 Section Lines.

Plan View - Not to Scale

(Show a minimum of three reference ties to durable physical objects, relevant monuments and physical conditions that will enable recovery of the corner.)



I hereby certify that this land surveying document was prepared and the related survey work was performed by me or under my direct personal supervision and that I am a duly licensed Land Surveyor under the laws of the State of Iowa.

Isaiah M. Reicks Date: 10-31-23

License number 22468
My license renewal date is December 31, 2023.
Sheets covered by this seal: Individual sheet only

List Corner to be Indexed			
Corner	Section	Township	Range
NW-SE-SW	4	87	12

Project Number: 2023-563
FB: Black Hawk 11, Page(s) 18