

Prepared by & Return to: Isaiah M. Reicks, HRS, LLC, 2206 East Bremer Avenue, Waverly, IA 50677, Phone 319-483-5187

Land Survey Monument situated in
Section **4**, Township **87** North, Range **12** West of the Fifth Principal Meridian, **Black Hawk** County, Iowa.
On file in **Book 336, Page 577** in the County Recorder's Office.

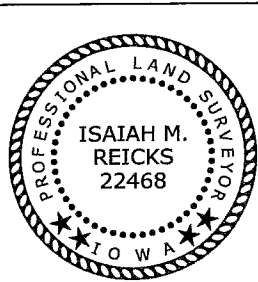
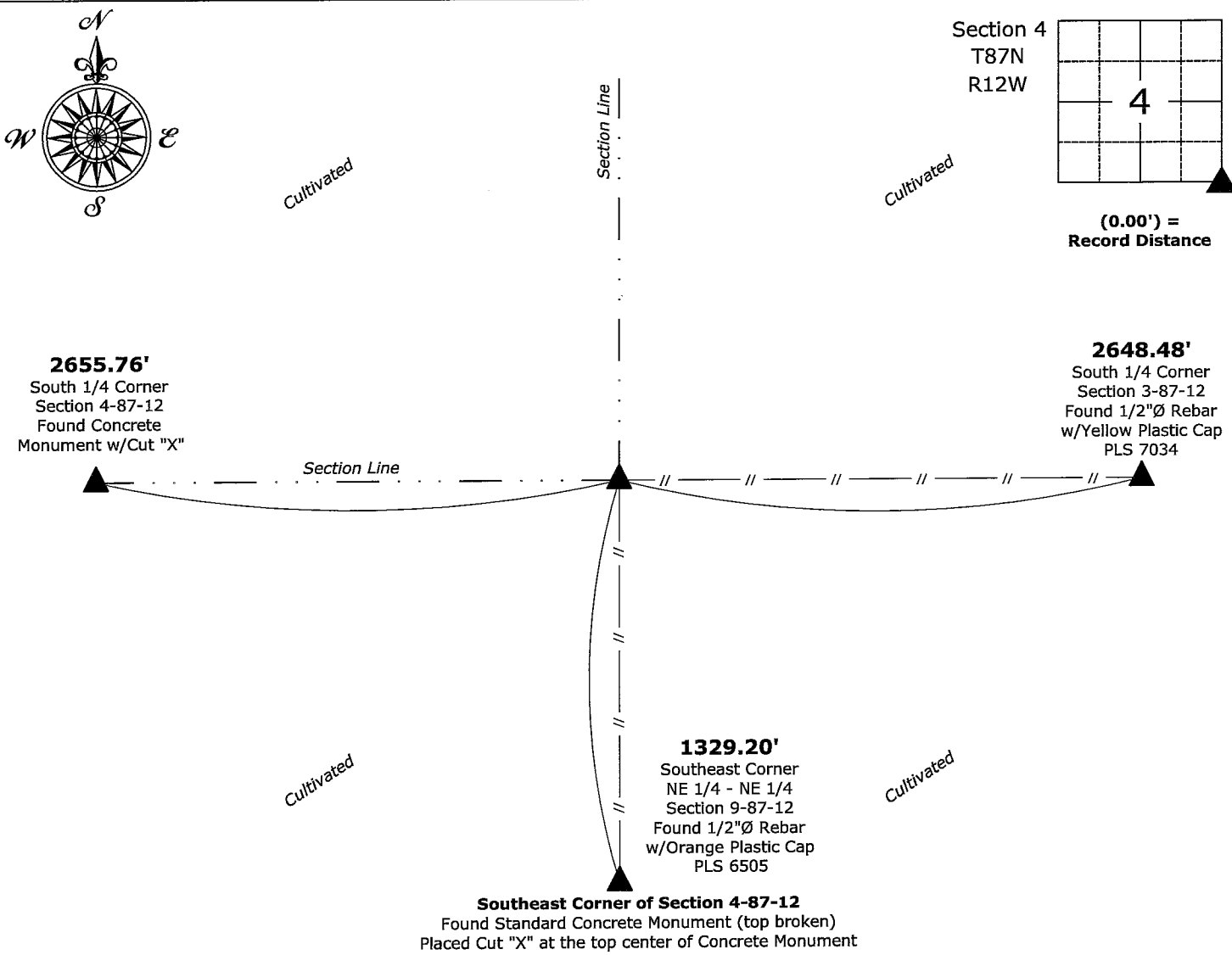
This certificate is being prepared in compliance with Iowa Code Chapter 355.11 because:

- ☐ There is no certificate on file for this corner.
- ☒ There are no longer three valid ties of record.
- ☐ There are changes to reference ties of record.
- ☒ There is change of monumentation of record.
- ☐ To clarify description of record monument (ties).

Monument Description and Remarks:

Southeast Corner: Found Standard Concrete Monument (top broken) with information obtained from the previously recorded Section Corner Certificate. Placed Cut "X" at the top center of Concrete Monument to perpetuate the corner.

(Show a minimum of three reference ties to durable physical objects, relevant monuments and physical conditions that will enable recovery of the corner.)



I hereby certify that this land surveying document was prepared and the related survey work was performed by me or under my direct personal supervision and that I am a duly licensed Land Surveyor under the laws of the State of Iowa.

Isaiah M. Reicks
Date: 10-31-23
License number 22468
My license renewal date is December 31, 2023.
Sheets covered by this seal: Individual sheet only

| List Corner to be Indexed | | | |
|---------------------------|---------|----------|-------|
| Corner | Section | Township | Range |
| SE | 4 | 87 | 12 |

| |
|-------------------------------|
| Project Number: 2023-563 |
| FB: Black Hawk 11, Page(s) 18 |