



Doc ID: 008247380001 Type: GEN
Recorded: 10/06/2017 at 03:30:37 PM
Fee Amt: \$7.00 Page 1 of 1
Black Hawk County Iowa
SANDIE L. SMITH RECORDER

File 2018-00006195

Reserved for County Recorder's use.

Kyle J. Helland, 1107 Technology Parkway, Cedar Falls, Iowa 50613-6951, (319)-266-0161

UNITED STATES PUBLIC LAND SURVEY CORNER CERTIFICATE OF

LAND SURVEY MONUMENTS SITUATED IN SECTION NO. 4, TOWNSHIP NO. 87 NORTH, RANGE
NO. 12 WEST OF THE FIFTH PRINCIPAL MERIDIAN, BLACK HAWK COUNTY, IOWA.

PREVIOUSLY RECORDED IN FEE BOOK 2005 17180.

(SHOW REASON FOR PREPARING THIS CERTIFICATE, THE EVIDENCE AND DETAILED PROCEDURES USED IN ESTABLISHING THE
CORNER POSITIONS AND MONUMENTATION FOUND OR PLACED.)

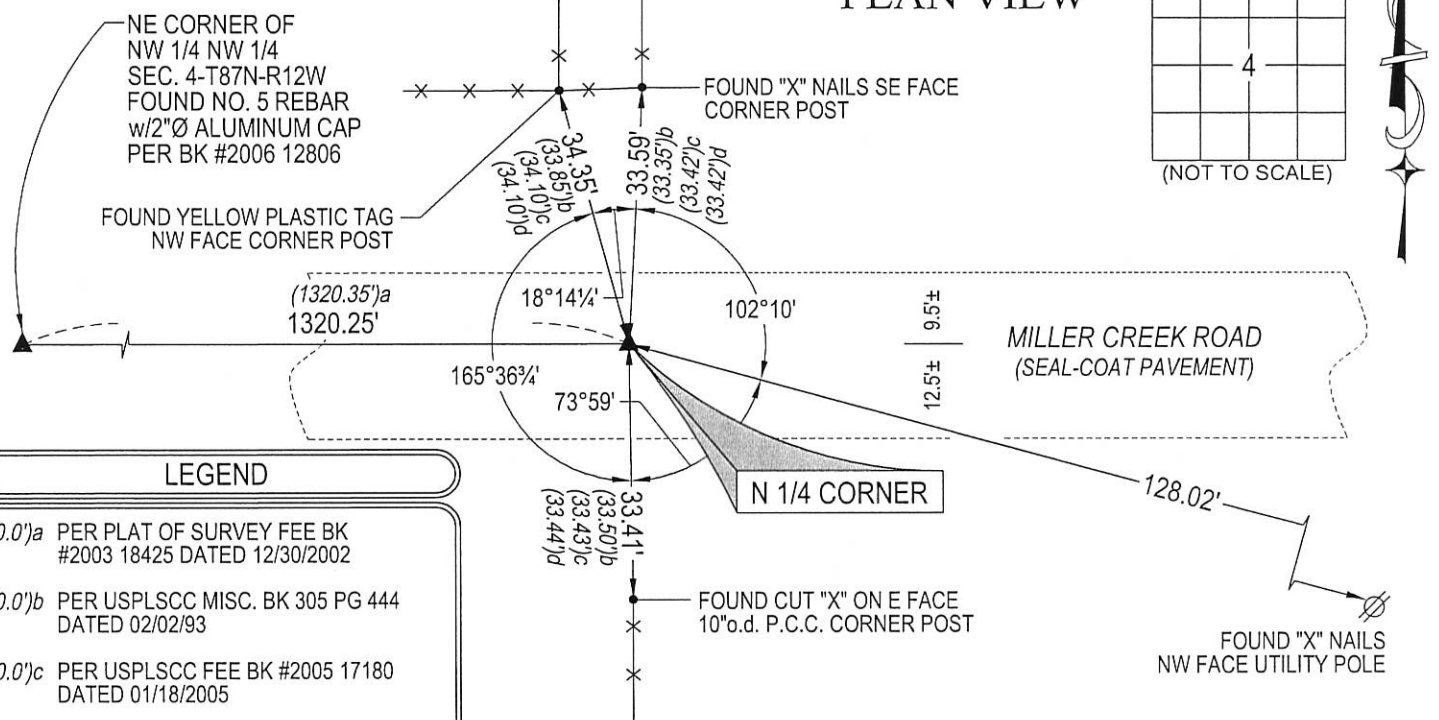
MONUMENT DESCRIPTION AND REMARKS:

MONUMENTATION HAS CHANGED. SURVEY COMPLETED IN THE NW FRL 1/4 OF SEC. 4-T87N-R12W.

→ **N 1/4 CORNER:** JOHN BALL HISTORICAL RECORDS PAGE 400 DATED 05/17/1887 CALLS FOR [STONE]. PLAT OF
SURVEY FEE BOOK 305 PAGE 443 DATED 02/02/93 CALLS FOR [FD 3/8" Ø REBAR]. USPLSCC MISC. BOOK 305
PAGE 444 CALLS FOR [FD. 3/8" REBAR OVER C.M.]. PLAT OF SURVEY FEE BOOK 2003 18425 DATED 12/30/02
CALLS FOR [FOUND NO. 4 REBAR]. USPLSCC FEE BOOK 2004 06209 CALLS FOR [FND. #5 RBR @ 4" DEEP &
13.57' WEST OF S. 1/4, VS. RECORD WPA 13.55'. RECOVERY IN 5/97 FND. STD. WPA C.M. 10" DEEP & SET #5
RBR TO SURF., BY B.H. COUNTY. CORNER(S) UTILIZED FOR "RECORD OF SURVEY" OF SAID SECTION AND
MILLER CREEK RD. BRIDGE PROJECT TO WEST]. USPLSCC FEE BOOK 2005 17180 DATED 01/18/2005 CALLS
FOR [SET MAG NAIL w/STAINLESS STEEL WASHER PLS 16961 FROM PREVIOUS REFERENCE TIES OBTAINED
FROM THE PREVIOUS SECTION CORNER CERTIFICATE RECORDED IN THE BLACK HAWK COUNTY
RECORDER'S OFFICE IN FEE BOOK 2004-06209 ON AUGUST 20, 2003. PREVIOUS MONUMENT WAS COVERED
BY RESURFACING OF MILLER CREEK ROAD]. SEARCHED AREA USING TIES AND MAGNETIC LOCATOR, FOUND
NO. 4 REBAR (0.4' DEEP) IN SEAL-COAT ROAD. USPLSCC FEE BK 2004 06209 & 2005 17180 BOTH CALL A
DISTANCE OF 13.57' EAST TO THE S 1/4 OF SECTION 33. SEARCHED THIS AREA, NOTHING FOUND. SAID
FOUND NO. 4 REBAR FITS REFERENCE TIES WITHIN REASON, UTILIZED SAID NO. 4 REBAR AS N 1/4 CORNER
OF SECTION 4-T87N-R12W.

(SHOW A MINIMUM OF THREE REFERENCE TIES TO DURABLE PHYSICAL OBJECTS, RELEVANT MONUMENTS AND PHYSICAL
CONDITIONS THAT WILL ENABLE RECOVERY OF THE CORNER.)

PLAN VIEW



LEGEND

- (0.0')a PER PLAT OF SURVEY FEE BK #2003 18425 DATED 12/30/2002
- (0.0')b PER USPLSCC MISC. BK 305 PG 444 DATED 02/02/93
- (0.0')c PER USPLSCC FEE BK #2005 17180 DATED 01/18/2005
- (0.0')d PER USPLSCC FEE BK #2004 06209 DATED 08/11/03



HELLAND ENGINEERING & SURVEYING, LTD.
1107 Technology Parkway
Cedar Falls, Iowa 50613-6951
(319)-266-0161

SHINER = 8d. NAIL & 1 5/16" Ø METAL SHINER DRAWN BY: JBL
BRASS TAG = 8d. NAIL & 13/16" Ø BRASS TAG
OPC = PLASTIC CAP (O=ORANGE, R=RED, Y=YELLOW)
(00') RECORDED AS FILE NAME: 17-188-28.DWG



I hereby certify that this land surveying document was prepared
and the related survey work was performed by me or under my
direct personal supervision and that I am a duly licensed
Professional Land Surveyor under the laws of the State of Iowa.

Kyle J. Helland
License Number 23212
My license renewal date is December 31, 2017.
All pages or sheets are covered by this seal except:

LIST CORNERS TO BE INDEXED

CORNER	SECTION	TOWNSHIP	RANGE
N 1/4 CORNER	4	87N	12W