

PROOF FILED FOR RECORD DEC 11 2002 AT 4:00P. M. FEE 1-5.00/

COMPARED

*Patricia A. Luss*

BLACK HAWK COUNTY RECORDER

HELLAND ENGINEERING &amp; SURVEYING LTD

Paul H. Helland, 1107 Technology Parkway, Cedar Falls, Iowa 50613-6951, (319)-266-0161

UNITED STATES PUBLIC LAND SURVEY CORNER CERTIFICATE  
OF

LAND SURVEY MONUMENTS SITUATED IN SECTION NO. 4, TOWNSHIP NO. 87 NORTH, RANGE NO. 12 WEST OF THE FIFTH PRINCIPAL MERIDIAN, BLACK HAWK COUNTY, IOWA.

PREVIOUSLY RECORDED IN BOOK \_\_\_\_\_, PAGE \_\_\_\_\_.

(SHOW REASON FOR PREPARING THIS CERTIFICATE, THE EVIDENCE AND DETAILED PROCEDURES USED IN ESTABLISHING THE CORNER POSITIONS AND MONUMENTATION FOUND OR PLACED.)

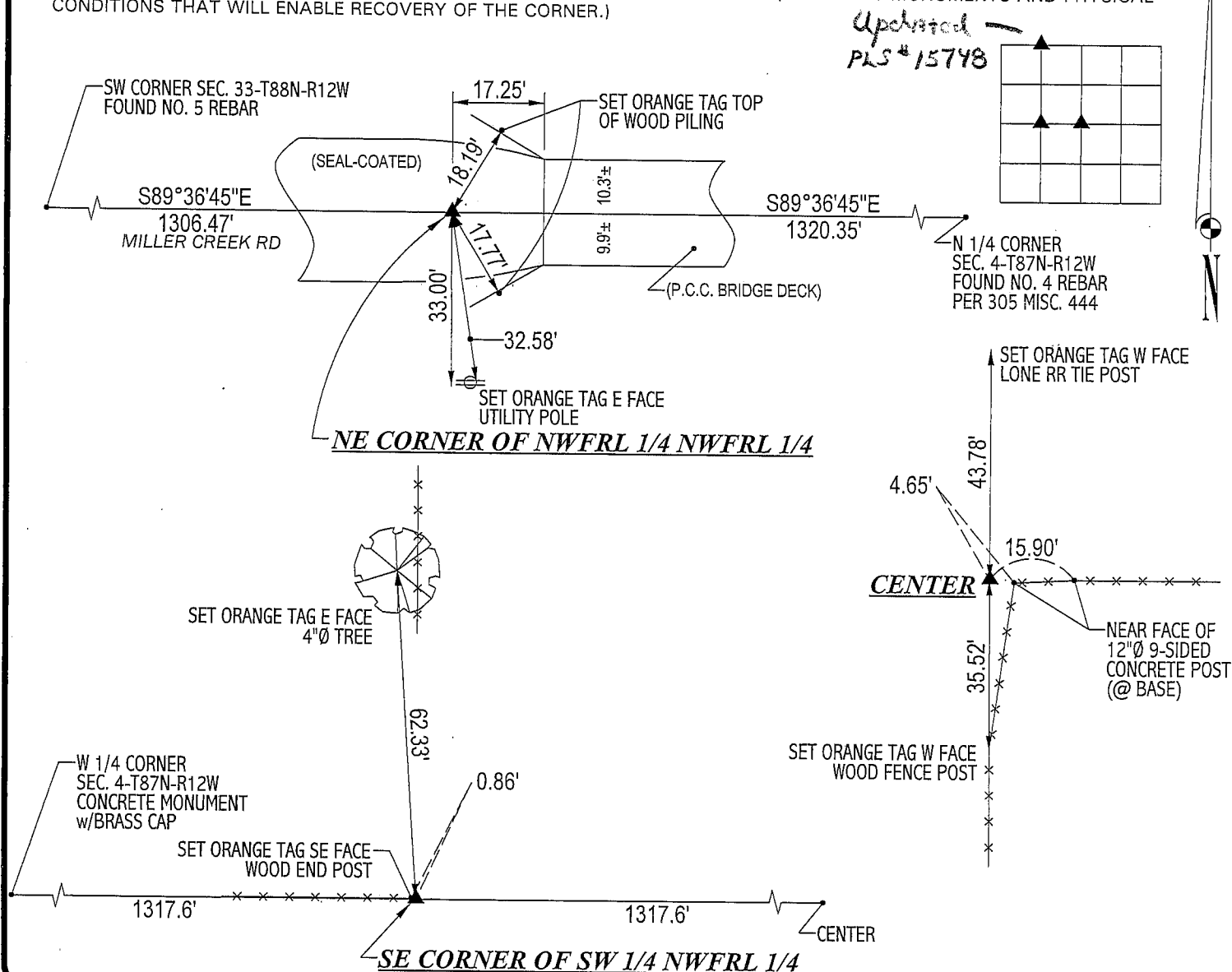
## MONUMENT DESCRIPTION AND REMARKS:

NO CORNER CERTIFICATES ON FILE. SURVEY DONE IN NWFL 1/4 OF SEC. 4-T87N-R12W.

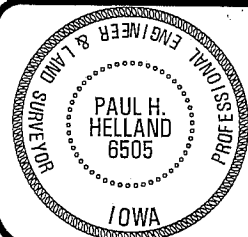
- CENTER: SET NO. 4 REBAR w/ORANGE CAP #6505 @ FORMER LOCATION OF 12"Ø 9-SIDED CONCRETE CORNER POST (NOW ON ITS SIDE SOUTH OF CORNER).
- NE CORNER OF NWFL 1/4 NWFL 1/4: SET "MAG" NAIL IN SEAL-COATED PAVEMENT HALFWAY BETWEEN THE NW CORNER & N 1/4 CORNER OF SEC. 4-T87N-R12W AND ON A STRAIGHT LINE BETWEEN THE SW CORNER OF SEC. 33-T88N-R12W & SAID N 1/4 CORNER.
- SE CORNER OF SW 1/4 NWFL 1/4: SET NO. 4 REBAR w/ORANGE CAP #6505 @ MIDPOINT OF SOUTH LINE OF NWFL 1/4.

## PLAN VIEW

(SHOW A MINIMUM OF THREE REFERENCE TIES TO DURABLE PHYSICAL OBJECTS, RELEVANT MONUMENTS AND PHYSICAL CONDITIONS THAT WILL ENABLE RECOVERY OF THE CORNER.)

HELLAND ENGINEERING & SURVEYING, LTD.  
1107 Technology Parkway  
Cedar Falls, Iowa 50613-6951  
(319)-266-0161

FILE NAME: 02-338C3.DRG



I hereby certify that this land surveying document was prepared and the related survey work was performed by me or under my direct personal supervision and that I am a duly licensed Land Surveyor under the laws of the State of Iowa.

Paul H. Helland  
License Number 6505  
My license renewal date is December 31, 2003.  
All pages or sheets are covered by this seal except:

## LIST CORNERS TO BE INDEXED

CORNER	SECTION	TOWNSHIP	RANGE
CENTER	4	87N	12W
NE CORNER	4	87N	12W
NWFL 1/4 NWFL 1/4			
SE CORNER	4	87N	12W
SW 1/4 NWFL 1/4			

*Rec*