

Prepared by & Return to: Isaiah M. Reicks, HRS, LLC, 2206 East Bremer Avenue, Waverly, IA 50677, Phone 319-483-5187

Land Survey Monument situated in
Section **4**, Township **87** North, Range **12** West of the Fifth Principal Meridian, **Black Hawk** County, Iowa.
Not on file in the County Recorder's Office.

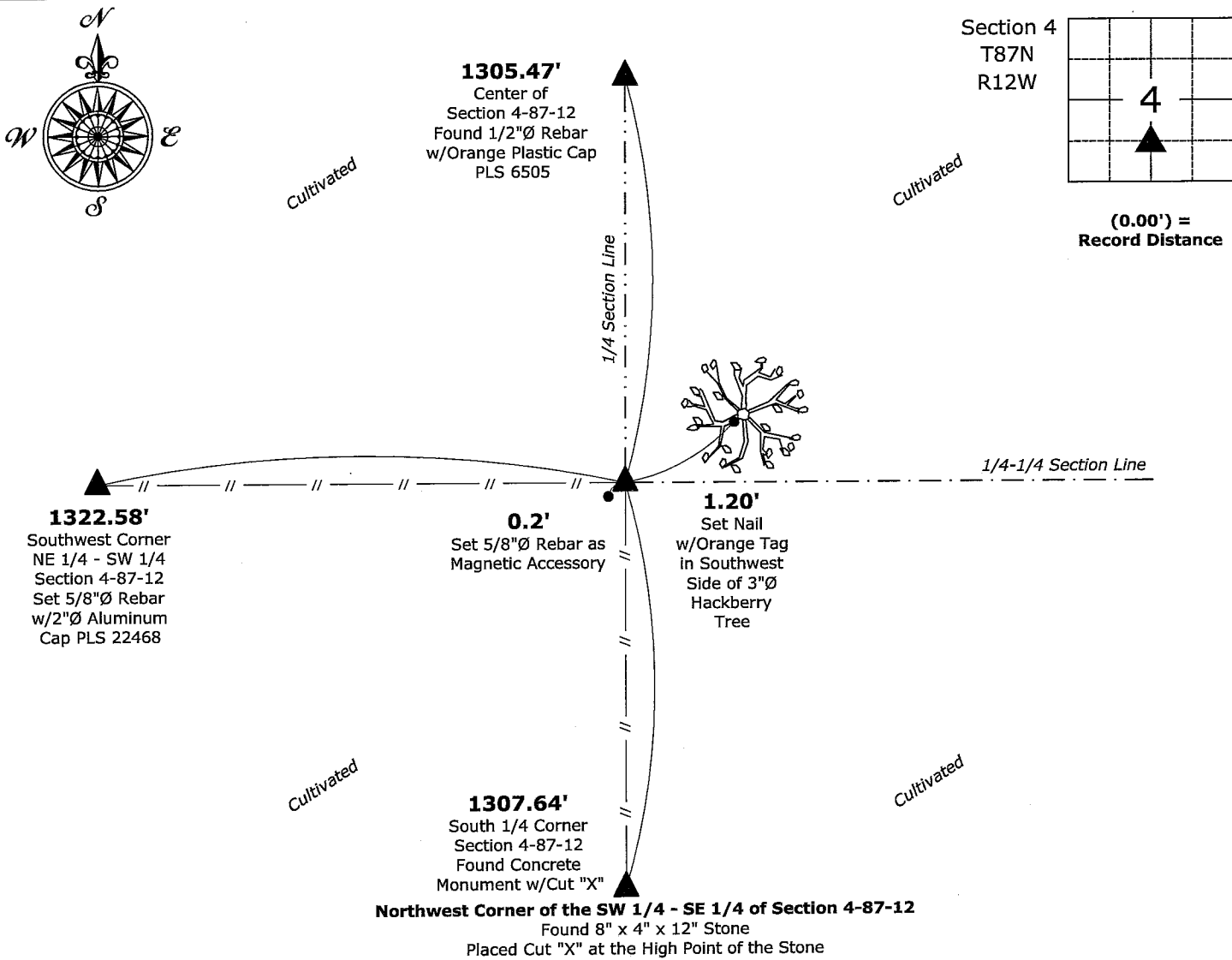
This certificate is being prepared in compliance with Iowa Code Chapter 355.11 because:

- ☒ There is no certificate on file for this corner.
- ☐ There are no longer three valid ties of record.
- ☐ There are changes to reference ties of record.
- ☐ There is change of monumentation of record.
- ☐ To clarify description of record monument (ties).

Monument Description and Remarks:

Northwest Corner of the SW 1/4 - SE 1/4: Historical Survey by John Ball, on Page 400 calls for a "Stone", on file in the County Engineer's Office. Found 8"x4"x12" Stone near an existing Corner Post. Placed Cut "X" at the High Point of the Stone to perpetuate the corner. Set 5/8"Ø Rebar as Magnetic Accessory.

(Show a minimum of three reference ties to durable physical objects, relevant monuments and physical conditions that will enable recovery of the corner.)



I hereby certify that this land surveying document was prepared and the related survey work was performed by me or under my direct personal supervision and that I am a duly licensed Land Surveyor under the laws of the State of Iowa.

Isaiah M. Reicks 10-31-23
Isaiah M. Reicks Date:
License number 22468
My license renewal date is December 31, 2023.
Sheets covered by this seal: Individual sheet only

List Corner to be Indexed			
Corner	Section	Township	Range
NW-SW-SE	4	87	12

Project Number: 2023-563
FB: Black Hawk 11, Page(s) 18