



Doc ID: 008247370001 Type: GEN  
Recorded: 10/06/2017 at 03:30:32 PM  
Fee Amt: \$7.00 Page 1 of 1  
Black Hawk County Iowa  
SANDIE L. SMITH RECORDER

File 2018-00006194

Reserved for County Recorder's use.

Kyle J. Helland, 1107 Technology Parkway, Cedar Falls, Iowa 50613-6951, (319)-266-0161

# UNITED STATES PUBLIC LAND SURVEY CORNER CERTIFICATE OF

LAND SURVEY MONUMENTS SITUATED IN SECTION NO. 4, TOWNSHIP NO. 87 NORTH, RANGE NO. 12 WEST OF THE FIFTH PRINCIPAL MERIDIAN, BLACK HAWK COUNTY, IOWA.  
PREVIOUSLY RECORDED IN FEE BOOK #2003 18424

(SHOW REASON FOR PREPARING THIS CERTIFICATE, THE EVIDENCE AND DETAILED PROCEDURES USED IN ESTABLISHING THE CORNER POSITIONS AND MONUMENTATION FOUND OR PLACED.)

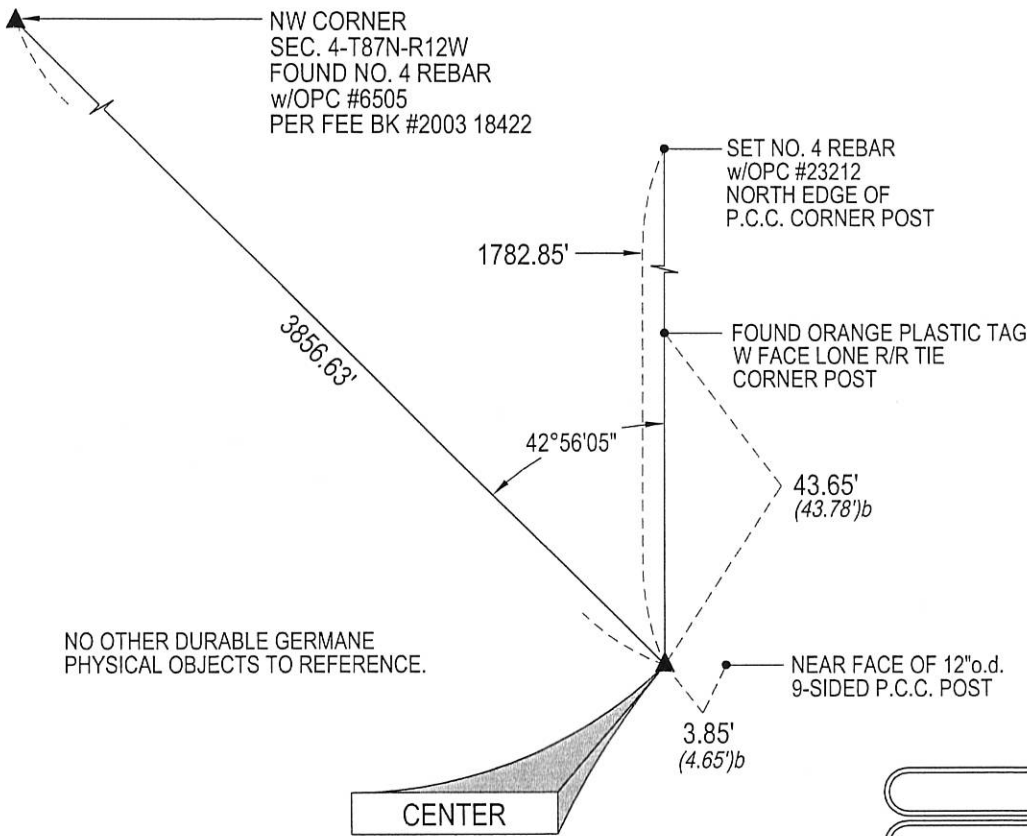
## MONUMENT DESCRIPTION AND REMARKS:

ONLY ONE REFERENCE TIE REMAINS. SURVEY COMPLETED IN THE NW FRL 1/4 OF SEC. 4-T87N-R12W.

→ **CENTER:** NO BLACK HAWK COUNTY ENGINEER REFERENCE TIES AVAILABLE. JOHN BALL HISTORICAL RECORDS PAGE 400 DATED 05/17/1887 CALLS FOR [STONE & STAKE]. PLAT OF SURVEY FEE BOOK #2003 18425 DATED 12/30/02 CALLS FOR [SET NO. 4 REBAR w/ORANGE CAP #6505 @ LOCATIONS OF REMOVED 12"Ø 9-SIDED CONCRETE CORNER POST]. USPLSCC FEE BOOK #2003 18424 CALLS FOR [SET NO. 4 REBAR w/ORANGE CAP #6505 @ FORMER LOCATION OF 12" 9-SIDED CONCRETE CORNER POST (NOW ON ITS SIDE SOUTH OF CORNER)]. SEARCHED AREA, FOUND NO. 4 REBAR w/OPC #6505 (0.2' DEEP). NOTE: BOTH FENCE LINES RUNNING EAST AND SOUTH HAVE BEEN REMOVED.

(SHOW A MINIMUM OF THREE REFERENCE TIES TO DURABLE PHYSICAL OBJECTS, RELEVANT MONUMENTS AND PHYSICAL CONDITIONS THAT WILL ENABLE RECOVERY OF THE CORNER.)

## PLAN VIEW



## LEGEND

(0.0')b PER USPLSCC FEE BK #2003 18424 DATED 12/30/02



HELLAND ENGINEERING & SURVEYING, LTD.  
1107 Technology Parkway  
Cedar Falls, Iowa 50613-6951  
(319)-266-0161

SHINER = 8d. NAIL & 1 5/16"Ø METAL SHINER DRAWN BY: JBL  
BRASS TAG = 8d. NAIL & 13/16"Ø BRASS TAG  
OPC = PLASTIC CAP (O=ORANGE, R=RED, Y=YELLOW)  
(00') RECORDED AS FILE NAME: 17-188-29.DWG



I hereby certify that this land surveying document was prepared and the related survey work was performed by me or under my direct personal supervision and that I am a duly licensed Professional Land Surveyor under the laws of the State of Iowa.

Kyle J. Helland  
License Number 23212  
My license renewal date is December 31, 2017.  
All pages or sheets are covered by this seal except:

## LIST CORNERS TO BE INDEXED

CORNER	SECTION	TOWNSHIP	RANGE
CENTER	4	87N	12W