

PROOF FILED FOR RECORD JAN 19 2005 AT 10:00 A.M. FEE 1-5.00-1.00/

COMPARED

BLACK HAWK COUNTY RECORDER

ENV TEKIPPE ENGINEERING PC 128 SOUTH VINE ST WEST UNION IA 52175

TeKIPPE ENGINEERING, P.C., 128 South Vine Street, West Union, Iowa 52175 Phone (563) 422-5131

UNITED STATES PUBLIC LAND SURVEY CORNER CERTIFICATE
OF

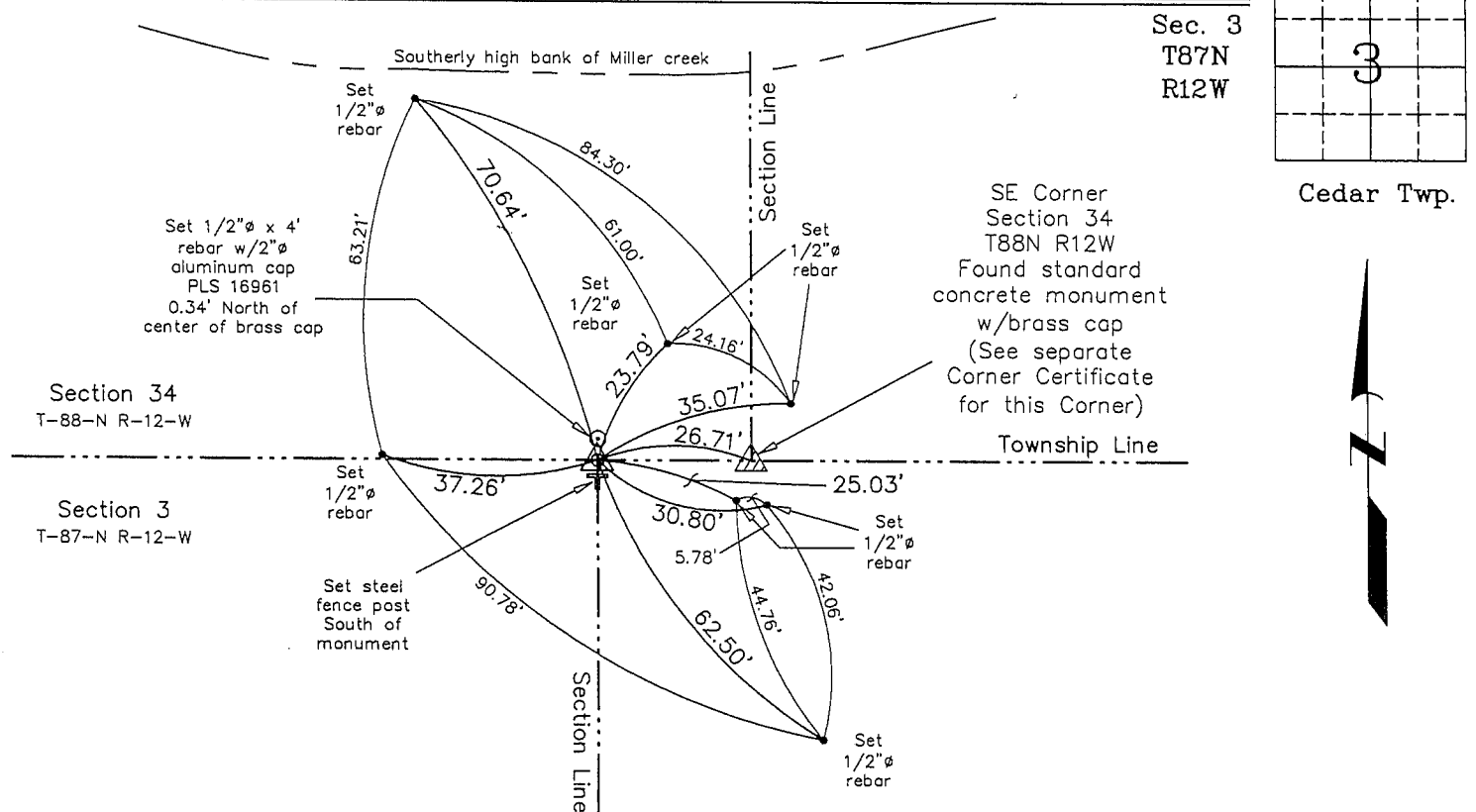
Land Survey Monuments situated in Section 3, Township 87 North, Range 12 West of the Fifth Principal Meridian, BLACK HAWK County, Iowa. Previously recorded in none in County Recorder's Office.
(book, page, document number, etc.)

(Show reason for preparing this certificate, the evidence and detailed procedures used in establishing the corner positions and monumentation found or placed.)

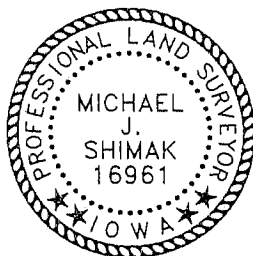
Monument Description and Remarks: NE Corner Section 3 T87N R12W: Found concrete monument w/brass cap, 6" deep. Set 1/2"Ø x 4' rebar w/2"Ø aluminum cap PLS 16961 at North side of monument, 0.34' from center of brass cap. Monument was found with information obtained from the Black Hawk County Engineer's Office in the Field Book Section Corner Ties, Section 34, T88N, R12W.

PLAN - VIEW

(Show a minimum of three reference ties to durable physical objects, relevant monuments and physical conditions that will enable recovery of the corner.)



NE Corner Section 3 T87N R12W
Found concrete monument w/brass cap, 6" deep.
Set 1/2" x 4' rebar w/2" aluminum cap PLS 16961 at North side
of monument, 0.34' from center of brass cap.



I hereby certify that this land surveying document was prepared and the related survey work was performed by me or under my direct personal supervision and that I am a duly licensed Land Surveyor under the laws of the State of Iowa.

Michael J. Shimak January 18, 2005
Michael J. Shimak Date

License number 18961
My license renewal date is December 31, 2005.
Sheets covered by this seal: Individual

List Corners to be Indexed

Corners	Section	Twp.	Range
NE	3	87N	12W

Project Number 04118.LS
FB. NRCS #3 PG. 12-22

X:\Section Corners\Sec. 03\3-87-12e.dwg